

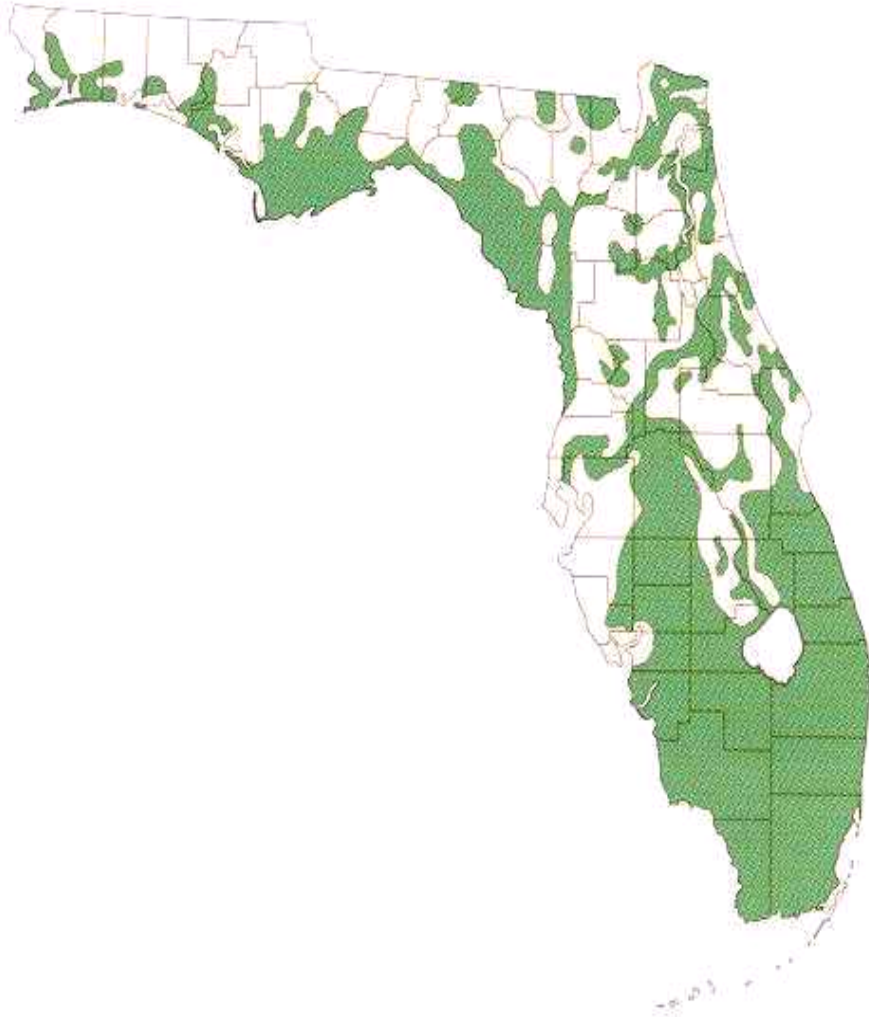
Statewide approaches to linking mitigation and restoration needs

Connie Bersok

Florida Department of
Environmental Protection

Extent of Florida's Wetlands

Wetlands Prior to Development



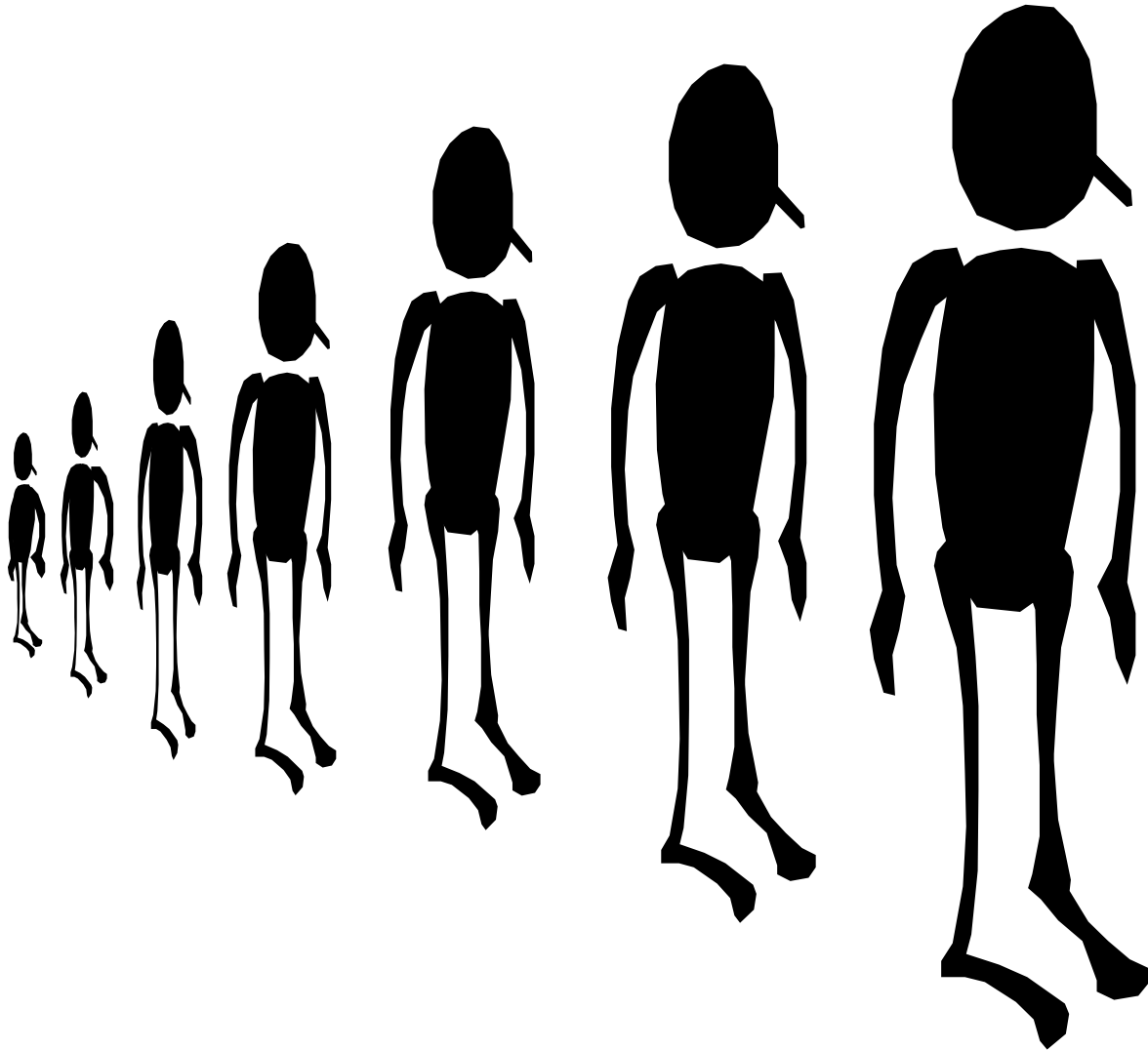
Wetlands
1989



Florida's (Human) Population Growth

1960

5 million



2000
16 million

Wetland Regulation



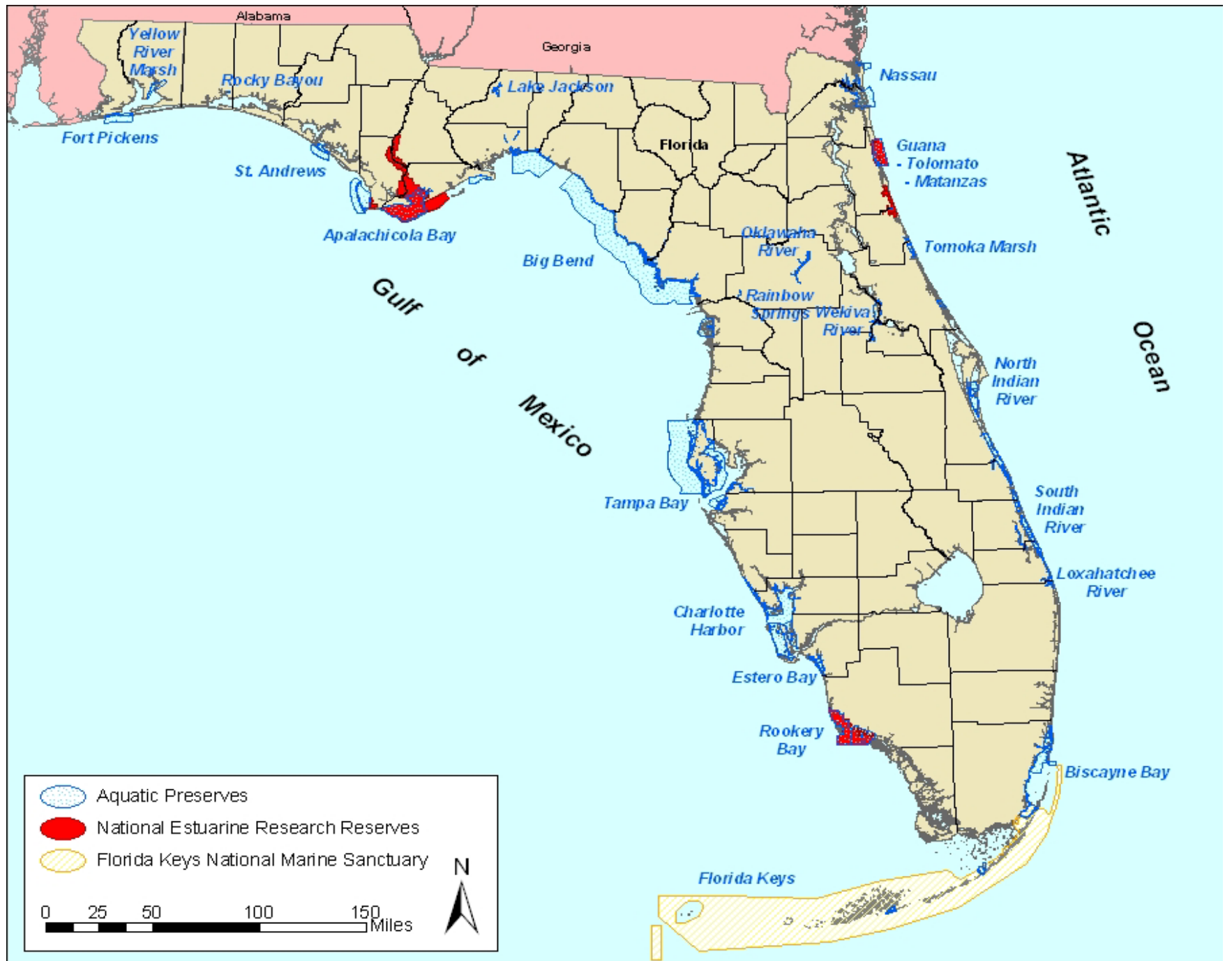
No net loss of wetland function

State Land & Water Management Programs

- State Parks
- Aquatic Preserves & Buffers, National Estuarine Research Reserves, and Florida Keys National Marine Sanctuary
- State Forests



Florida State Parks





How to link these two worlds of land management and mitigation?

- *Florida Ecological Restoration Inventory*
- *Mitigation Banking Program*
- *FDOT Mitigation Program*



Florida Ecological Restoration Inventory

[www.dep.state.fl.us/water/wetlands/
feri/index.htm](http://www.dep.state.fl.us/water/wetlands/feri/index.htm)

- FERI is a compilation of current and proposed ecological restoration projects on public owned & managed lands.
- Query by: Agency, County, Habitat, Drainage Basin, Restoration Type or technique

Florida Ecological Restoration Inventory

The following managed areas with restoration projects were found. Click on a link for a list of restoration project(s) and basic information for each project within these managed areas. If no managed areas are listed, then there are no projects in the inventory for the specified search. You may return to [Search](#) and revise your search. For more advanced searching and project reporting try [Advanced Search](#)

Conservation Areas	Counties
<u>Alafia River State Park</u>	Hillsborough
<u>Cockroach Bay State Buffer Preserve</u>	Hillsborough
<u>Hillsborough River State Park</u>	Hillsborough
<u>Little Manatee River State Park</u>	Hillsborough



Florida

Department of Environmental Protection

"More Protection, Less Process"



Cockroach Bay State Buffer Preserve DEP, Office of CAMA

Cockroach Bay State Buffer Preserve was not fully inventoried for this project. However, there are Brazilian pepper removal and natural community restoration needs on the string of islands that make up the majority of this preserve associated with past uses of this area as vegetable fields. Contact should be made with the preserve management for more information regarding these and other restoration needs of this managed area.

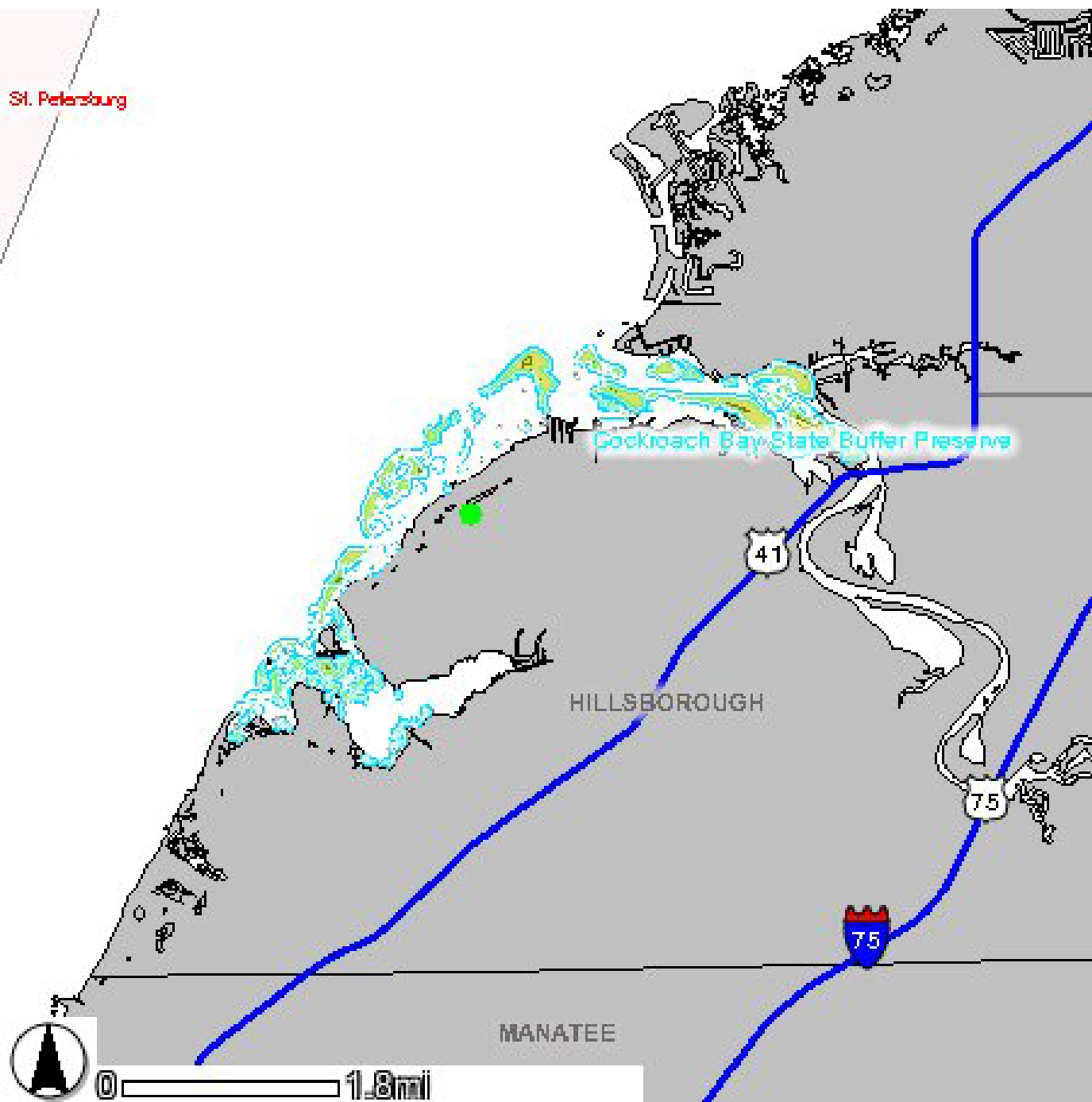
Cockroach Bay State Buffer Preserve is located in southwest Hillsborough County.

Contact: Randy Runnels

Phone: 813/744-6100

Web Site: <http://www.dep.state.fl.us/coastal/sites/tampabay/cockroachb/info.htm>

St. Petersburg



Cockroach Bay State Buffer Preserve

41

75

75

HILLSBOROUGH

MANATEE

0 1.3mi

Hillsborough River State Park
DEP, Div. of Recreation & Parks

Hillsborough River flows through this state park. Where the river flows over an outcrop of Suwanee limestone, a small set of rapids is created. Cypress swamps, pine flatwoods, and marshes make up the other natural features at this park. Restoration and erosion control along the river are the primary restoration needs at this unit.

Contact: John Baust, Park Manager
Phone: 813/987-6771

Web Site: <http://www.dep.state.fl.us/parks/district4/hillsboroughriver/index.asp>

Project Name: Hydrologic restoration

No Photo Available

Conduct surveys and fill ditches.

Project Footprint: 242 Acres

Beneficial Acreage: 242 Acres

Cost Estimate: \$1,000,000

Funds Received: \$0

Status: Planned

Last Updated: 10/28/2003

Project Categories:

Project Needs:

Hydrologic
restoration/enhancement

Funding

1993 Legislature: Let there be Banks!

- ◆ Restoration and enhancement of degraded systems
- ◆ Preservation of uplands and wetlands as intact ecosystems
- ◆ Ecological communities that were historically present
- ◆ Improve ecological condition of regional watersheds

38 Mitigation Banks Permitted State-wide since 1993

Ave bank size = 2,654 acres
(Range = 82 - 23,900 acres)

Total acres = 103,501

Total # potential credits = 33,016

Permitted Mitigation Banks and Mitigation Service Areas

Garcon Peninsula Mitigation Bank

San Pedro Bay Mitigation Bank

Lake Louisa and Green Swamp Florida Mitigation Bank

Reedy Creek

Clear Springs

Tampa Bay

Boran Ranch

Little Pine Island

Gorkscrew Regional

Panther Island

Big Cypress

Hole in the Donut

Northeast Florida Longleaf Mitigation Bank
Loblolly Mitigation Bank
Tupelo Mitigation Bank
Sundew Mitigation Bank

Graham Swamp

Barberville

Port Orange

Farmton

Lake Monroe

Colbert-Cameron

East Central

Tosohatchee

TM-Econ

Split Oak

Mary A Ranch

CGW

Bear Point

Platt's Creek

Bluefield Ranch

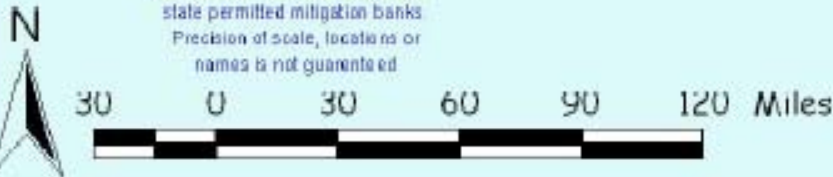
R.G. Reserve

Loxahatchee

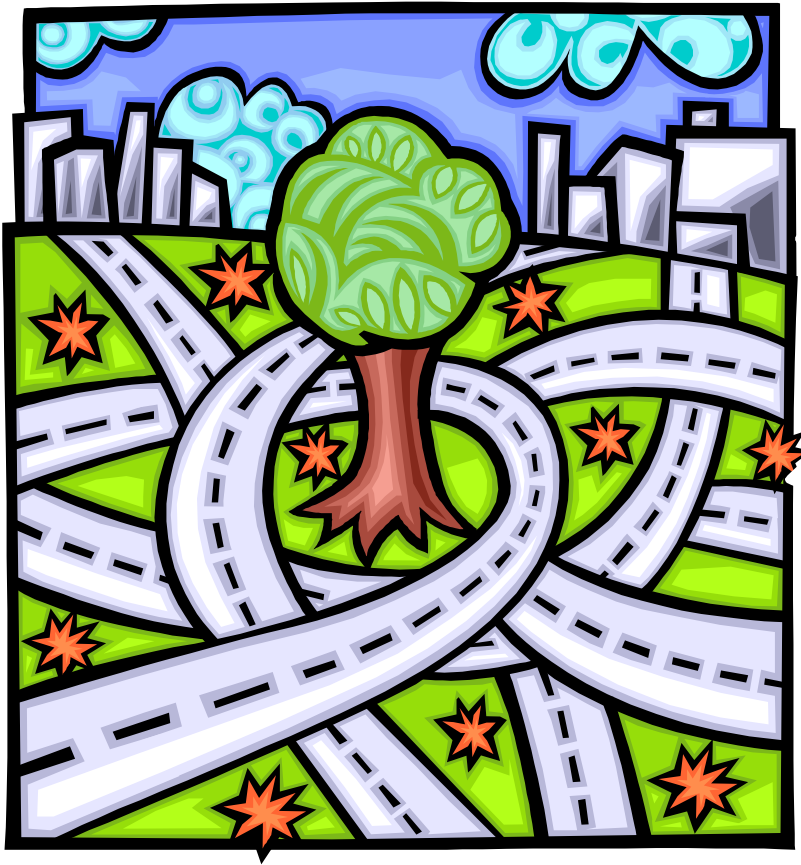
Florida Wetlandsbank

Everglades Mitigation Bank

This map was prepared by FDEP to represent the general locations of state permitted mitigation banks. Precision of scale, locations or names is not guaranteed.



FDOT Mitigation Program Ch 373.4137, F.S. (1996)



**Northwest Florida
Water Management
District**

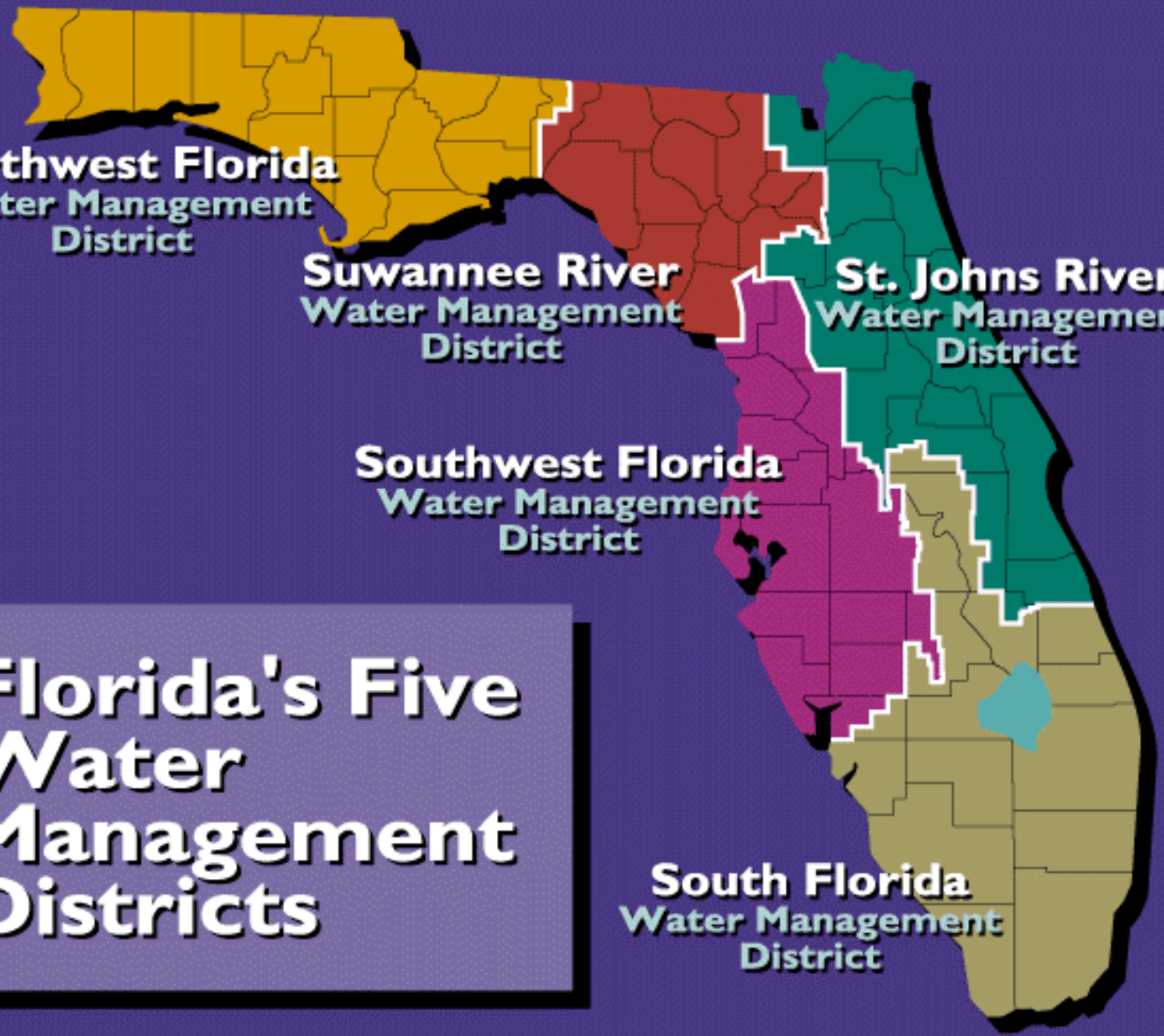
**Suwannee River
Water Management
District**

**St. Johns River
Water Management
District**

**Southwest Florida
Water Management
District**

**South Florida
Water Management
District**

**Florida's Five
Water
Management
Districts**



Statewide, since 1997:

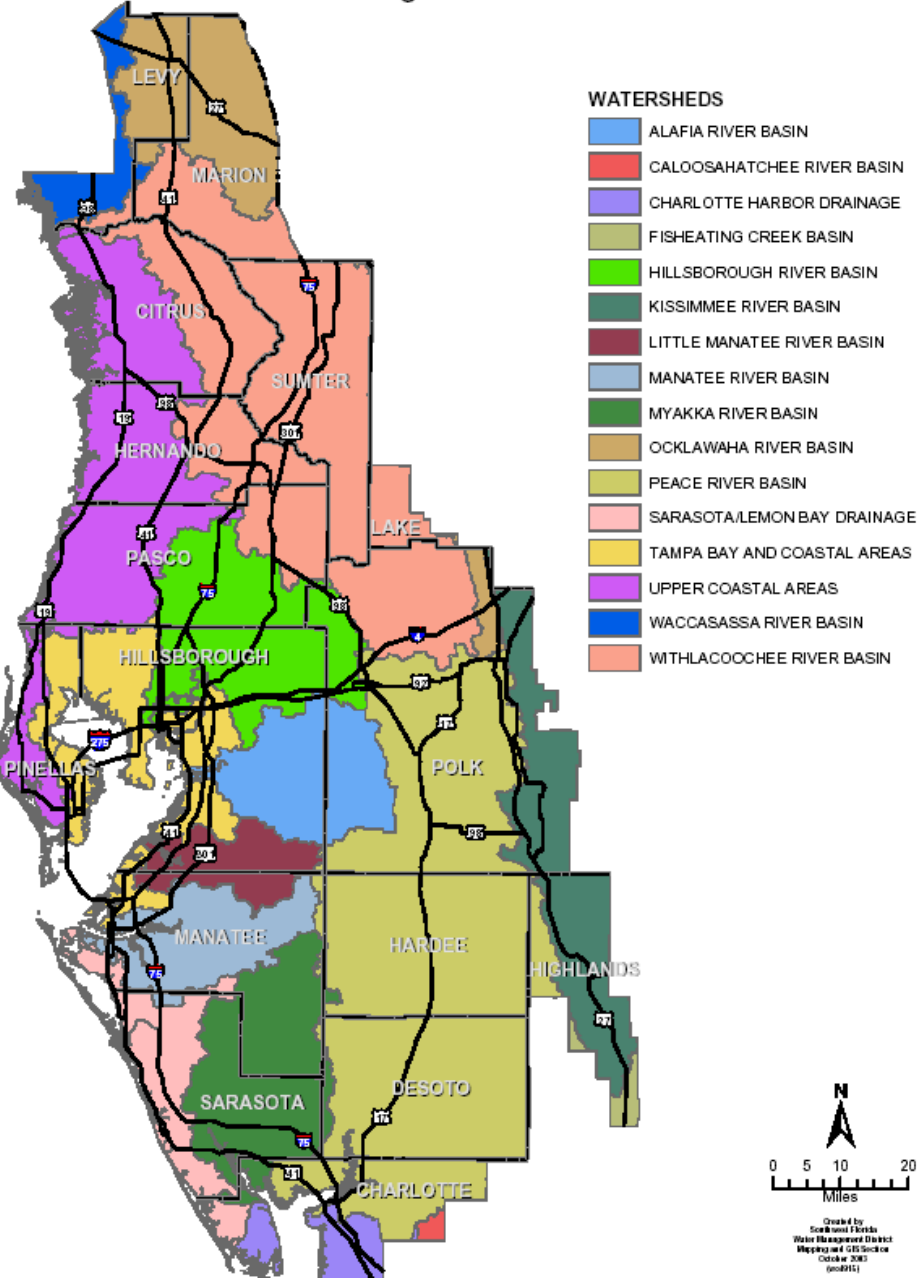
- *260 proposed road projects*
- *1,551 acres of proposed impact*
- *\$129 million for mitigation*
- *120 WMD mit projects*

Each year,
each WMD
prepares a
plan for their
region to
address
anticipated
wetland
impacts due to
FDOT road
projects

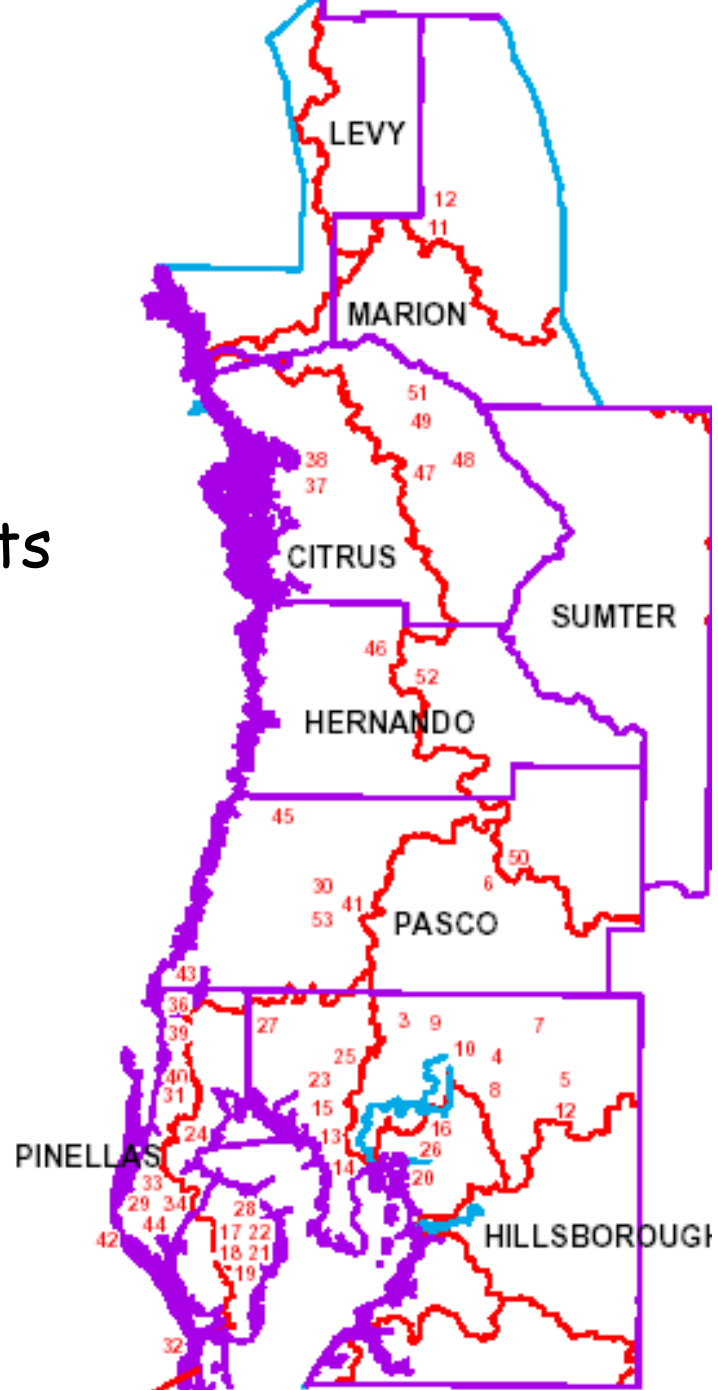


ERP Watersheds/Basins in the S.W.F.W.M.D.

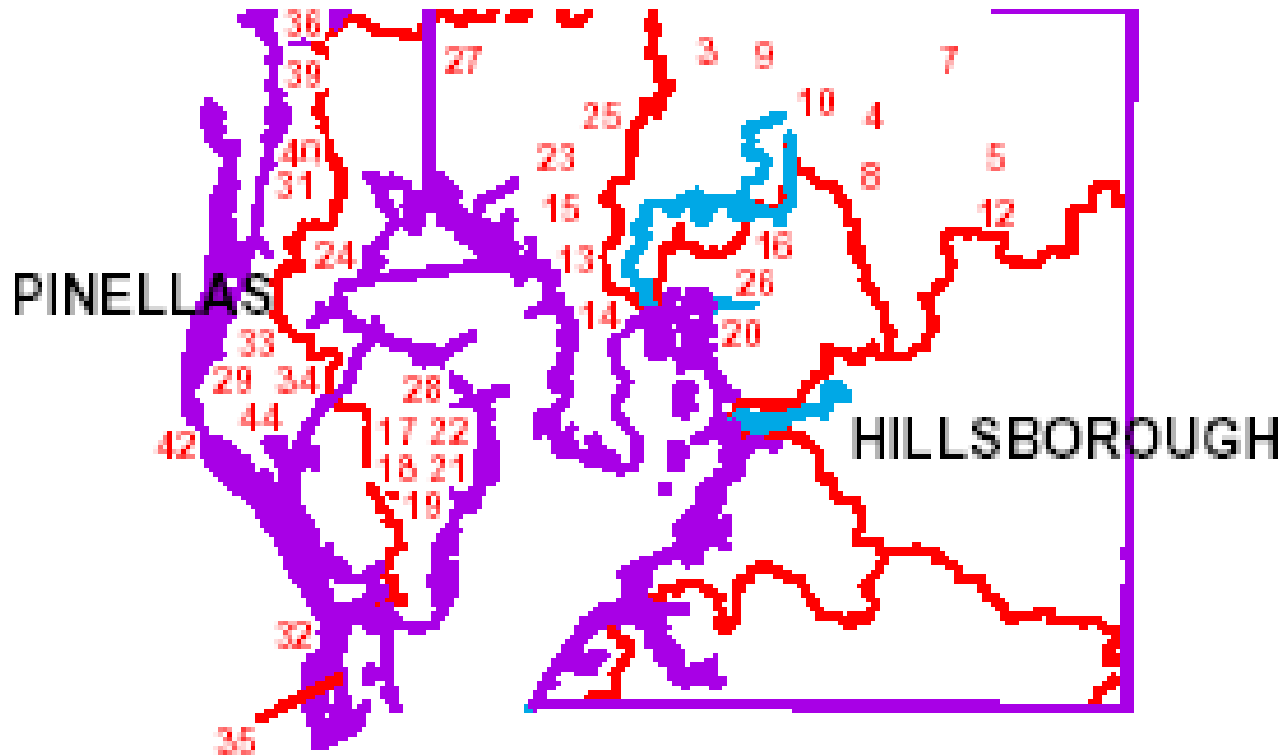
Figure 1



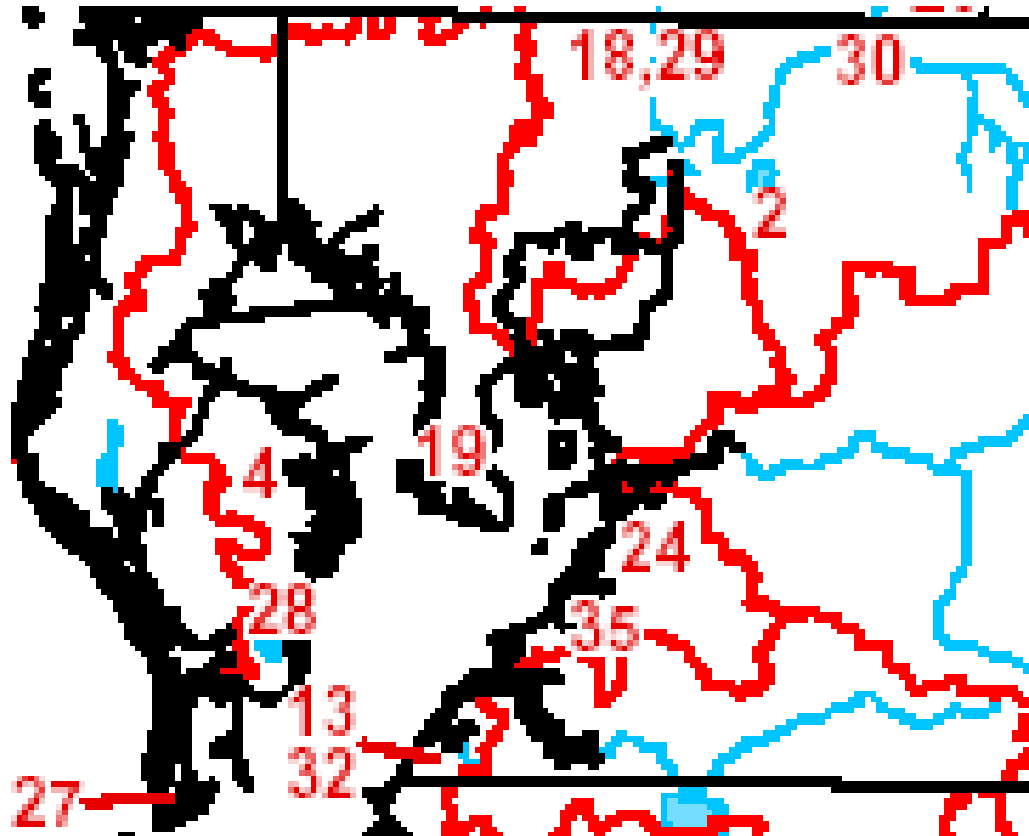
FDOT Transportation Projects
With wetland impacts
Within SWFWMD
(red lines = watershed boundaries)



FDOT Transportation Projects With wetland impacts In vicinity of Tampa Bay



Mitigation Projects to offset FDOT impacts In the vicinity of Tampa Bay



Lake Thonotasassa mitigation site in Hillsborough River Basin



View from the upland fringe, with the deep water flow-way in the foreground, followed in sequence by planted cypress and fireflag, an upland peninsula with planted oaks, and the enhanced marsh and additional planted cypress in the background. The shoreline of Lake Thonotasassa is located along the tall cypress in the left background.