



US Army Corps
of Engineers

Stakeholders Forum: Mitigation Action Plan

ORM, GORM, and WORM: The Future of Wetlands Databases

Robert Brumbaugh
Mark Sudol
USACE

May 11, 2006



US Army Corps
of Engineers

Framing the Problem

- 1100 regulators,
38 Districts
- 100,000 permits issued
in FY 05
- Conducted over 100,000
wetland delineations
- Mitigation tracking
- Permit and mitigation

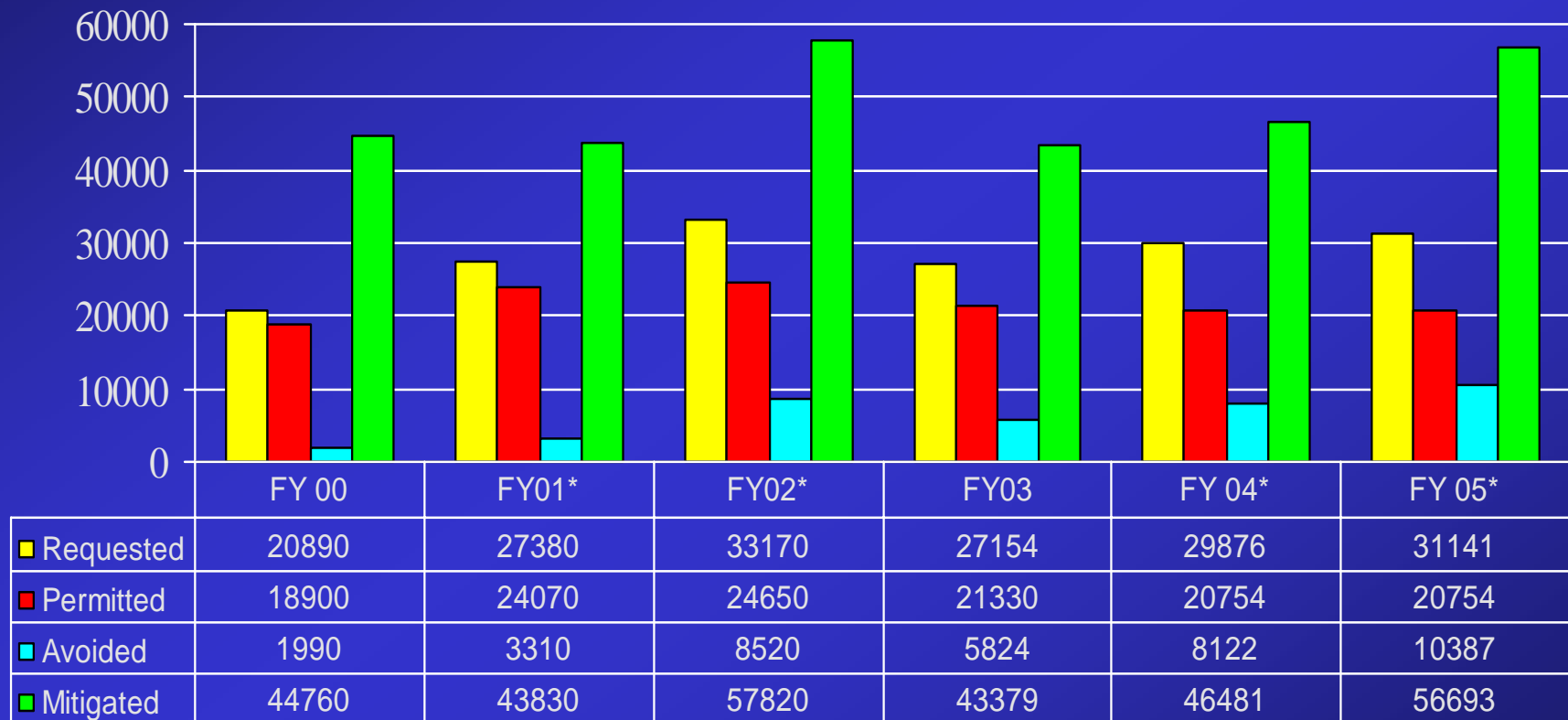


Compliance and enforcement activities



US Army Corps
of Engineers

Wetland Impacts and Mitigation



**The values for FY 01, FY 02, and FY 04 FY 05 Requested acres are estimates only, errors in data reporting are being investigated. More accurate data will be provided when available.*



US Army Corps
of Engineers

Permit Database: RAMS

- Regulatory Administrative Management System (RAMS)
- 2nd Generation database
- Informix and Oracle
- Basic Permit data
- Pre-formatted letters: benefit to PM's
- Improved data search capabilities





US Army Corps
of Engineers

Problems with RAMS

- Limited wetland data
 - Proposed impacts
 - Permitted impacts
 - Proposed Mitigation
- No spatial components
- District database only
- No public access to data



US Army Corps
of Engineers

ORM

- OMBIL Regulatory Module (ORM)
 - National database
 - Wetlands and waters of U.S. data
 - Pre-App, Application, Permit, As built
 - Proposed, as built, compliance fields for mitigation
 - Minimal Spatial component
 - Began installation in FY 2003



US Army Corps
of Engineers

ORM Problems

- Designed as national database supporting HQ
 - Data verification problems
 - Data entry
 - Program and transmission speed
- Result: all data not getting entered
- Headquarters managing interface improvements to be completed by Fall 2006



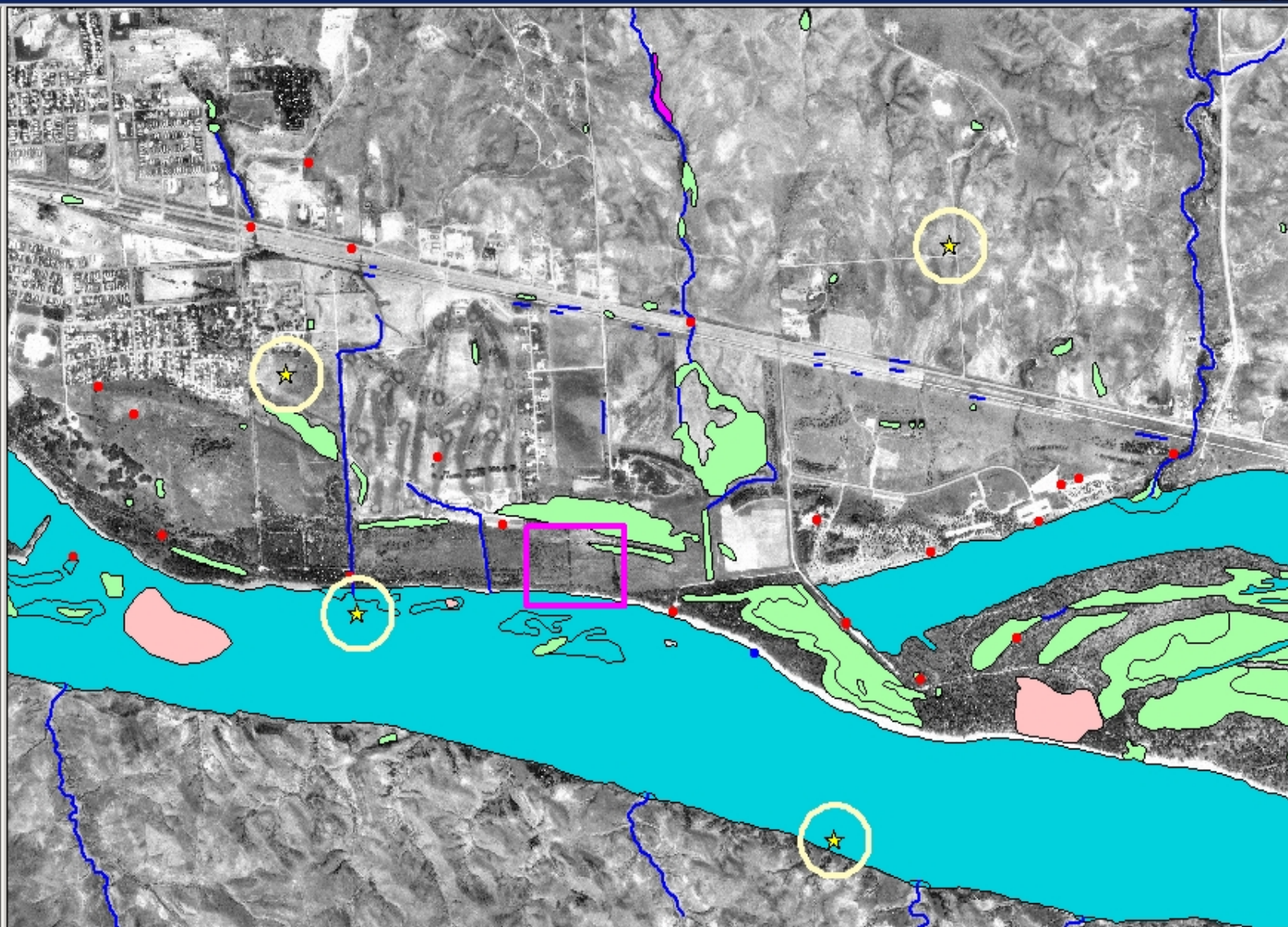
US Army Corps
of Engineers

G-ORM or WORM

- Major redesign of ORM
 - Spatial display as front end for database
 - A Improve data entry screens
 - Spatial data sharing through web services
 - Automated screening tools for:
 - Endangered/Threatened species and Critical Habitat
 - Historic properties/resources
 - Water intake structures



- Project_area.a.shp
- Cultural_resources.s
- Mitigation_bank.shp
- Endangerd_s.ppecies
- mit_200430156
- Rams1.shp
- Nwi_arc_Pierre
- Nwi_polygon_Pierre
 - L
 - P
 - R
 - U
- Pierre_sw_oq_1995
- Pierre_se_oq_1995
- Pierre_ne_oq_1995
- Pierre_nw_oq_1995
- Pierre24





US Army Corps
of Engineers

Database Status

- ORM: Installed in 18 Districts, all by end of 2006
- G-ORM: Beta testing in fall, installation FY 2007
 - Funds obligated from Corps
 - EPA is partner
- Data sharing
 - Meeting in Mid-may
 - MOA's by Sept
 - Web services
 - Public access



Developers • Cities • Counties
Need Wetland Credits
Information 229-896-4151

IWR / Brumbaugh

Courtesy: Sam Collinson



US Army Corps
of Engineers

Regulatory Branch

<http://www.usace.army.mil>

“Services for the Public”

“Regulatory/Permits”

mark.f.sudol@hq02.usace.army.mil

202-761-8560

robert.w.brumbaugh@usace.army.mil

703-428-7069