



Department of the Interior  
Managing and Conserving America's  
Ocean,  
Coastal and Great Lakes Resources



# DOI's Ocean Role



- 35,000 miles of coastline
- 180 marine and coastal National Wildlife Refuges
- 34 million acres in 74 marine and coastal National Parks
- 3.6 million acres of coral reef ecosystems
- 1.7 billion acres on the OCS



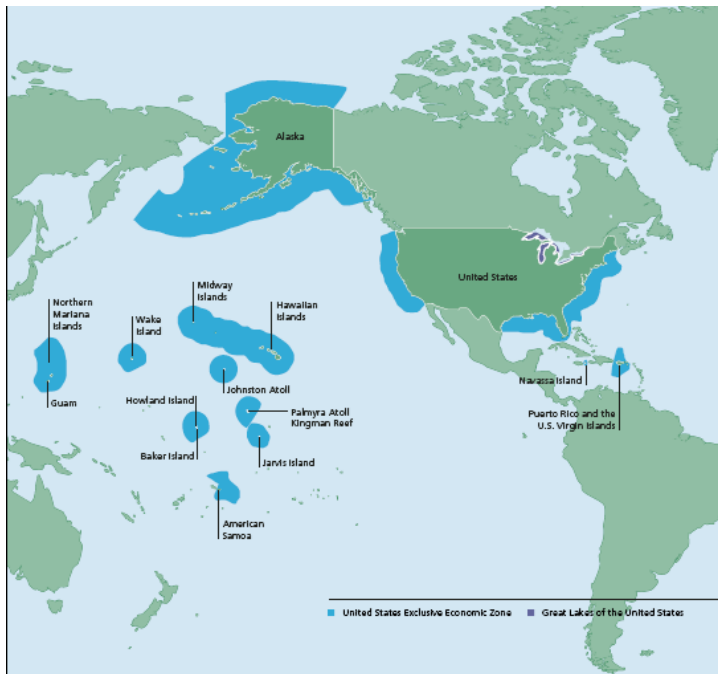
# DOI's Top Ten Ocean, Coastal and Great Lakes Responsibilities

1. **Manage** more than 2 billion acres of coastal and marine resources.
2. **Preserve** and protect natural and cultural resources.
3. **Promote** responsible multiple use of coastal and ocean resources.
4. **Manage** access and development of offshore energy and mineral resources
5. **Map** and model seafloor, coastal and estuarine environments
6. **Assess** physical, chemical and biological hazards
7. **Model** impacts of climate change on coastal and ocean ecosystems
8. **Provide** visitor services and recreational opportunities
9. **Educate** about science, cultural connections and good stewardship of coasts and ocean
10. **Partner** effectively and support regional alliances.

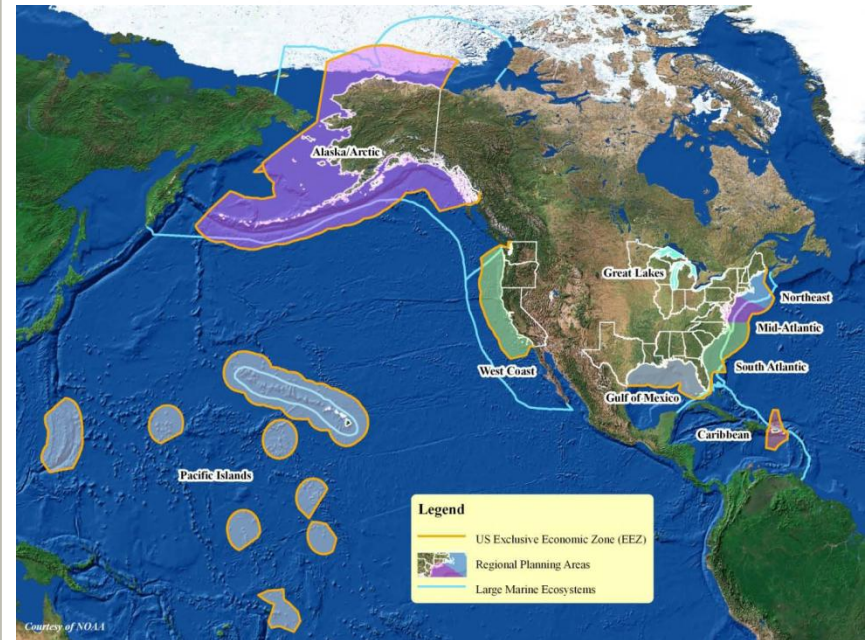
<http://www.doi.gov/initiatives/ocean.html>

# DOI's Role in the CMSP Framework

## DOI managed areas

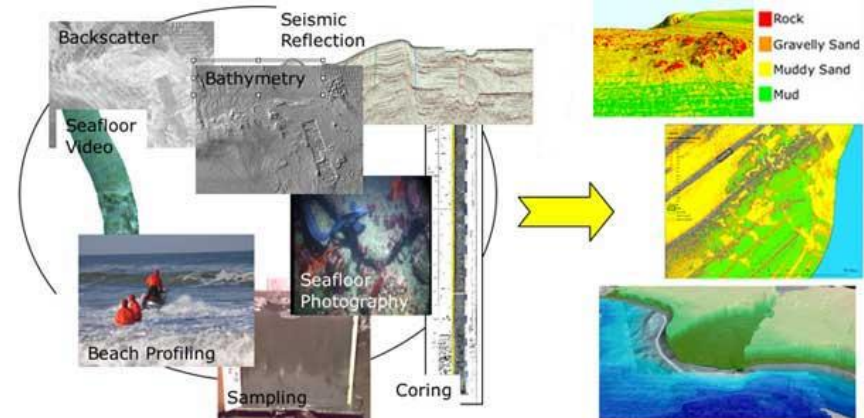


## CMSP Regional Planning Areas



# DOI's CMSP Role

- Minerals Management Service (MMS)- Alternative Energy
- US Geological Survey (USGS)- Seafloor Mapping
- US Fish and Wildlife Service (FWS)- Trust Species Habitat Mapping
- National Park Service (NPS)- MPAs of the coast



# Renewable Energy Production Marine Spatial Planning



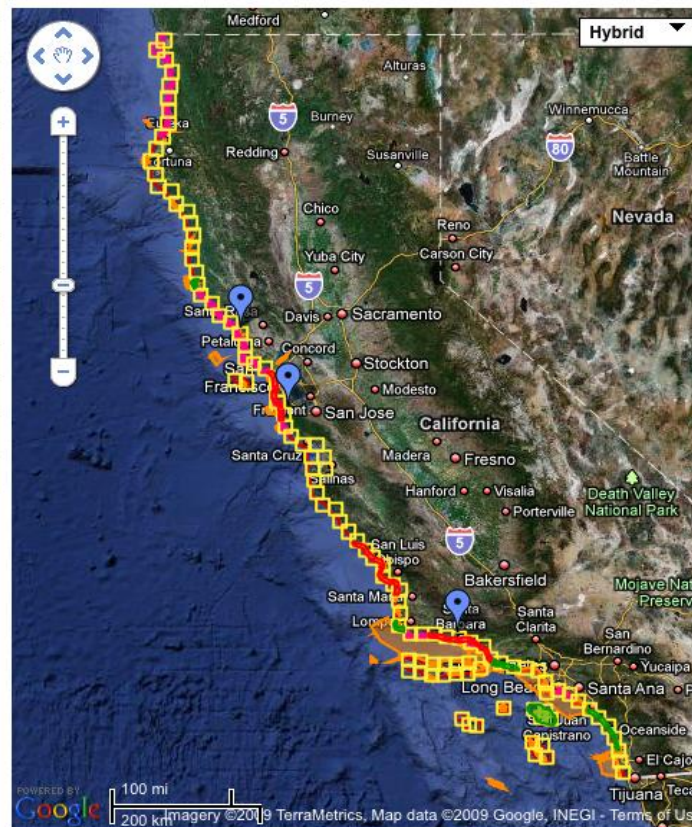
Multipurpose Marine  
Cadastre

<https://oceanenergy.mms.gov/website/mmc/viewer.html>

# Partnerships and Progress California Seafloor Mapping Program

## Progress





Map showing mapping and ground-truth progress as of July 2009



### Directions

Click on a feature to view the available information (i.e. click on a yellow block to view the block number).

### Legend

-  Map Blocks
-  Previously Mapped Areas
-  Mapped Areas
-  Mapped and Ground-truthed Areas
-  Seismic Profiled Areas
-  State 3-nm limit
-  USGS Ground-truth Surveys

### View in Google Earth™

Click on the link below to download and view these layers in Google Earth™.

[California\\_Seafloor\\_Mapping\\_Program.kmz](#)

Note: if you do not have Google Earth™ installed on your computer, you can download it from [here](#).

### Map

metadata: [Text](#) | [HTML](#) | [FAQ](#) | [XML](#)

### Mapping progress by block number

Download this table: [XLS](#) | [PDF](#)

Specific Geographic Location	Block Number	Swath Mapping	Video Ground-Truth
Oregon Border	1	Complete (Fugro)	Complete (USGS)
	2	Complete (Fugro)	Complete (USGS)
Crescent City	3	Complete (Fugro)	Complete (USGS)
	4	Complete (Fugro)	Complete (USGS)
	5	Complete (Fugro)	Complete (USGS)
	6	Complete (Fugro)	Complete (USGS)
	7	Complete (Fugro)	Complete (USGS)
Humboldt Bay	8	Complete (Fugro)	Complete (USGS)
	9	Planned (Fugro, Aug-Dec, 2009)	
	10	Planned (Fugro, Aug-Dec, 2009)	
	11	Planned (Fugro, Aug-Dec, 2009)	

To view the map, javascript must be enabled.

<http://walrus.wr.usgs.gov/mapping/csmp/progress.html>

We look forward to meeting our  
Nation's ocean, coastal and Great  
Lakes challenges with our many  
partners.

