



Overview of the Arizona Assessment Calculator to Inform Water Quality Assessment Decisions

JASON D. JONES, SENIOR SCIENTIST

Data Management Tools Session

The National Water Quality Data Management Training Workshop

May 31, 2017

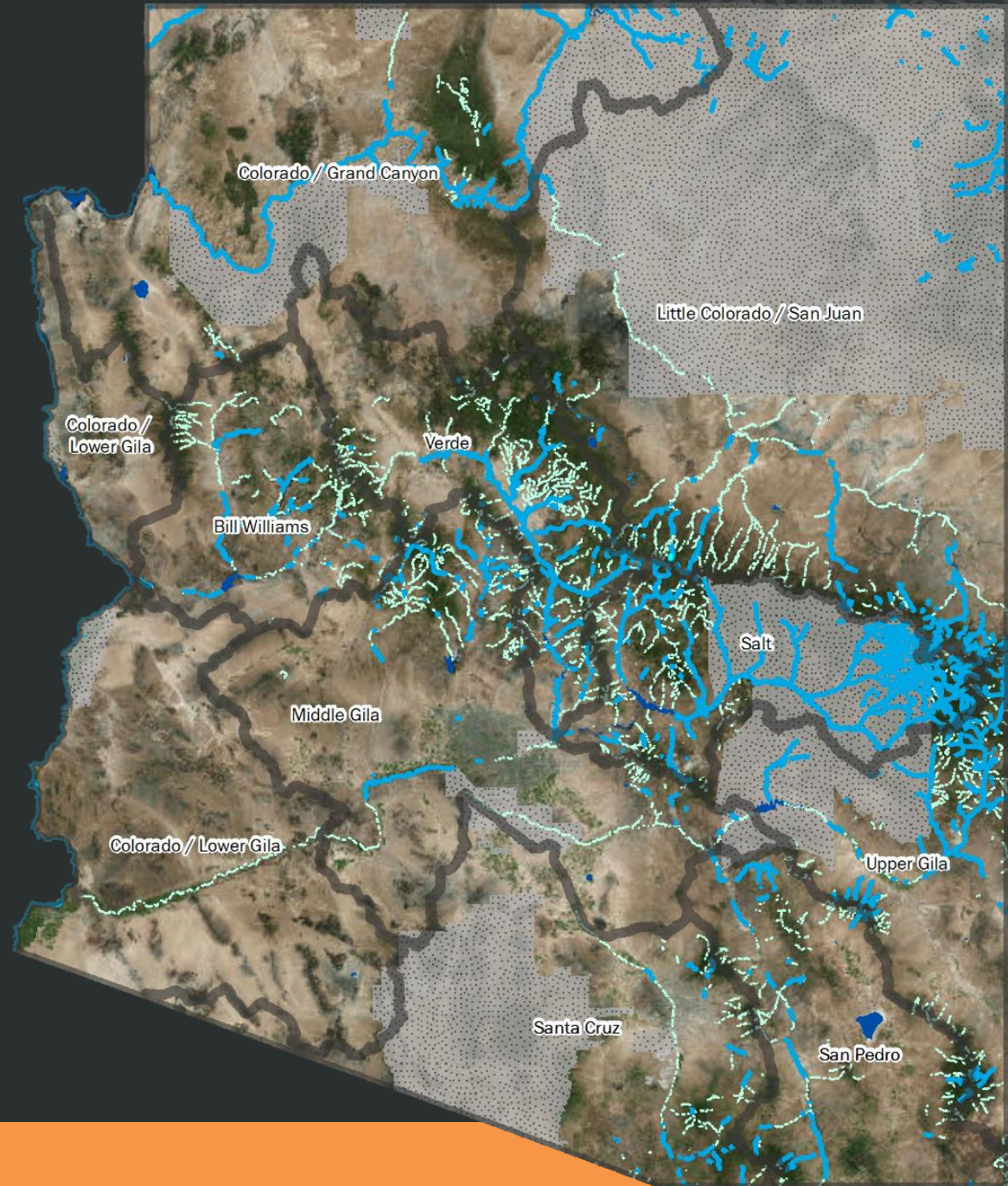
Problem Statement

- Make **attainment** and **impairment** decisions based on Arizona surface water quality **standards** as **quickly** and **accurate** as possible.



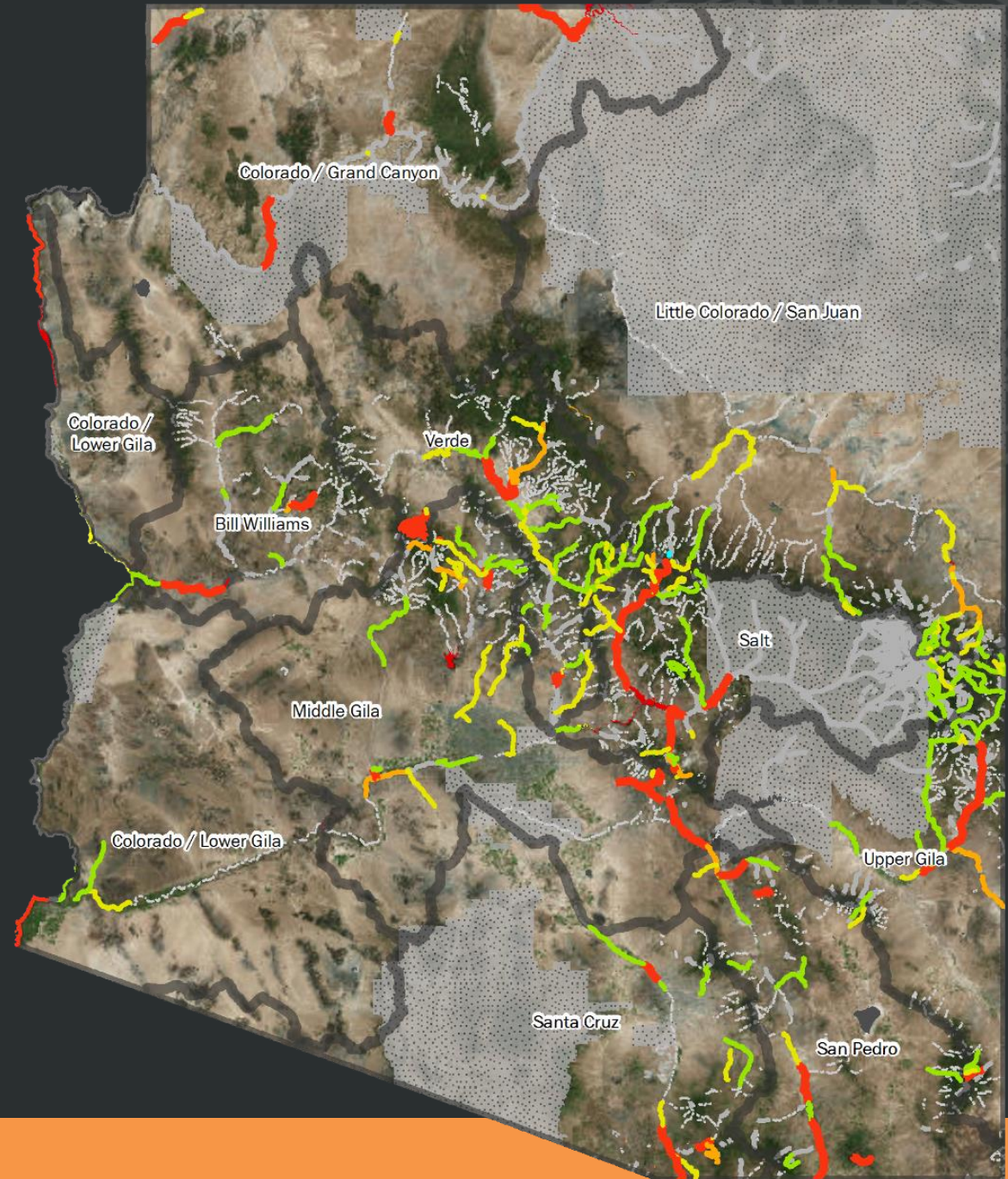
Context

- Universe:
 - Streams = **40,644 Stream Reaches**
 - ~ 1,220 Perennial Reaches
 - ~ 1,626 Intermittent Reaches
 - ~ 37,798 Ephemeral Reaches
 - Lakes = **257 Lakes**



Context

- Waterbodies Assessed in 2016 Assessment (5 year window)
 - Attaining All = 20
 - Attaining Some = 92
 - Inconclusive = 94
 - Not Attaining = 75
 - Impaired = 68
 - **Total = 349**
- Number of records used in 2016 Assessment = **140,000**
 - Internal 54%
 - External 46%



The Arizona Assessment Calculator

- What is the Arizona Assessment Calculator (AZAC)?
 - AZAC is a Java based tool developed by TetraTech in 2003 and upgraded in 2010.
- How has the tool / process improved workflow?
 - Reduced Analysis from 8 hours to 30 minutes per waterbody.
- Are AZAC or the Excel macros available for use?
 - Not really. AZAC is heavily tied to STORET codes and requires a Java Developer to modify. The Excel macros are tailored for AZAC outputs.



Raw Data (Internal & External)



AZ Assessment Calculator
Automated

Filter by
Assessment
Date Range

Aggregate by
Time (7 days)

Tally Exceedances
by Parameter

Identify Data Gaps per
Parameter (Core Parameters,
Seasonal Distribution)



Excel Macros
Manual

Tally Exceedances
by Designated Use

Aggregate
by Reach

Final Assessment
(Category 1 – 5)

Identify Data Gaps per Reach
(Core Parameters, Seasonal
Distribution)



Publish Report

Like

- Filters out non-credible data
- Handles Complex Standards
 - Binomial rule
 - Geomeans
 - Other statistical standards
 - Time sensitive calculations
 - Site specific standards

Change

- More automated
- Simplify process
 - Need for aggregation by time?
- Calculator needs to feed other parts of the assessment process
 - Integrated Report
 - ATTAINS

Punch Line

- Don't invest in a system that requires experts you don't have to maintain.

