A photograph of a pond with lily pads and reeds, with a dam and trees in the background. The text is overlaid on the top half of the image.

# TEA-21 Banking Preference Guidance

*Alexander Levy, Ecologist  
FHWA – Water and Ecosystems Team*

# Purpose

- ★ *Guide the application of the TEA-21 preference for mitigation banking to compensatory mitigation requirements under CWA Section 404*



Rice Lake, Minnesota DOT



# Factors for Consideration

- ▶ *Suitability of banking*
- ▶ *Multiple alternatives*



Rice Lake, Minnesota DOT



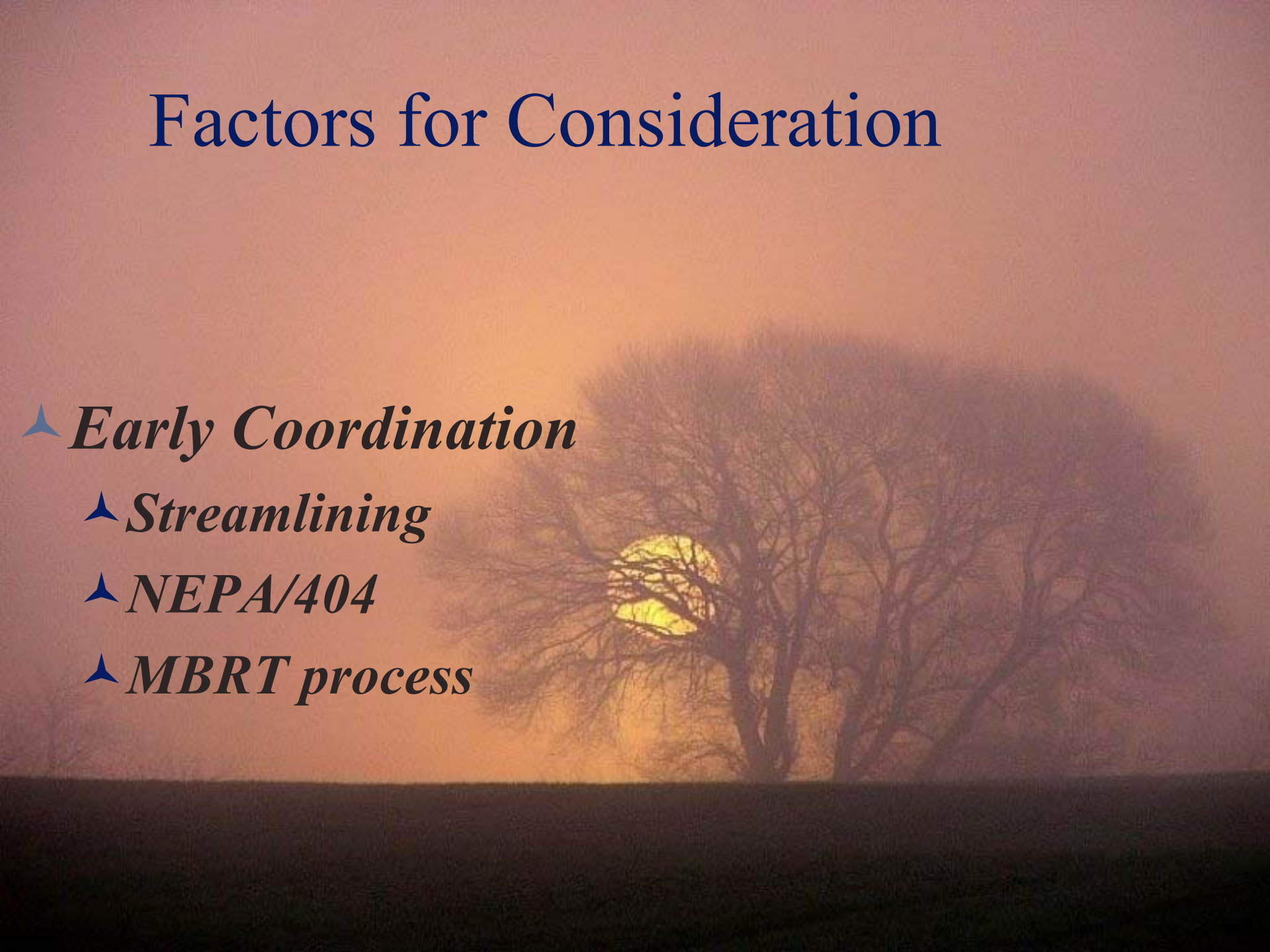
# Factors for Consideration

- ▶ *Early Coordination*

- ▶ *Streamlining*

- ▶ *NEPA/404*

- ▶ *MBRT process*



# Status Update

- ▶ *Guidance Document  
FHWA, USACE, EPA  
signed July 11, 2003*



## Status Update

*Domestic Scan - Series of field visits to discuss implementation and other mitigation issues with field personnel (2005).*





**North Carolina DOT/  
Company Swamp**



# Washoe Lake Mitigation Bank, Nevada DOT



