

Alaska Oil Spill Commission  
Final Report

# SPILL

The Wreck of the *Exxon Valdez*

Implications for Safe Transportation of Oil



State of Alaska



February 1990

Report of the Alaska Oil Spill Commission  
Executive Summary

n Valdez  
Transportation



January 1990



World Geodetic System of 1984  
SOUNDINGS IN FATHOMS  
AT MEAN LOWER LOW WATER

NOTE F  
All Mariners are requested to exercise caution when navigating these waters. Erosions and Accretions, concentrations of rock piles and water grass, and numerous shifting sandbars are occurring in the area of Inuvialuk Entrance, Seal Rocks and Darwin Lead Rocks and Marmouk Island.

NOTE G  
Photographic and altimeter surveys by the United States Geological Survey from May 1972 to August 1976.

AIDS TO NAVIGATION  
Consult U.S. Coast Survey supplemental information for navigators.

CAUTION  
Mariners are urged to exercise extreme care when transiting the narrow channels and narrow passages around Marmouk and Darwin Islands, Seal Rocks and Darwin Lead Rocks. 75% of the area shown is sand in these areas. 75% of the charted depths are based on depths here. The presence of underwater obstructions is possible.

CAUTION  
Only marine radioisotopes are listed for surface use. Land-based radioisotopes are listed in the U.S. Coast Light Lists and the U.S. Coast Survey Hydrographic Publication 117 (A & B).  
Radioisotopes are listed in the U.S. Coast Survey Hydrographic Publication 117 (A & B).  
Radioisotopes are listed in the U.S. Coast Survey Hydrographic Publication 117 (A & B).  
Radioisotopes are listed in the U.S. Coast Survey Hydrographic Publication 117 (A & B).

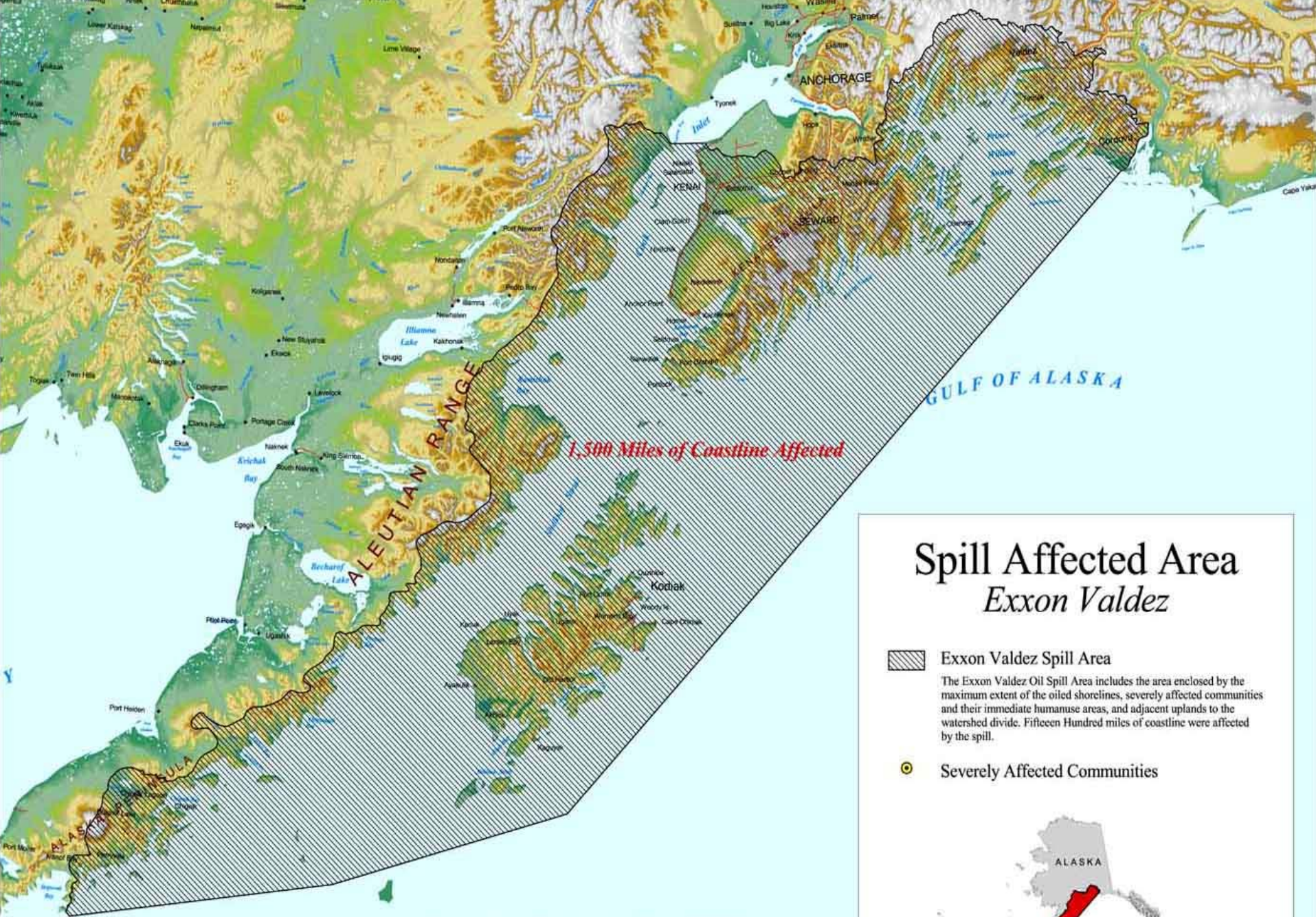
COLLISIONS  
See International Regulations for Preventing Collisions at Sea.  
The entire area of this chart is under the jurisdiction of the U.S. Coast Guard.













*1,500 Miles of Coastline Affected*

## Spill Affected Area *Exxon Valdez*

 Exxon Valdez Spill Area

The Exxon Valdez Oil Spill Area includes the area enclosed by the maximum extent of the oiled shorelines, severely affected communities and their immediate humanuse areas, and adjacent uplands to the watershed divide. Fifteen Hundred miles of coastline were affected by the spill.

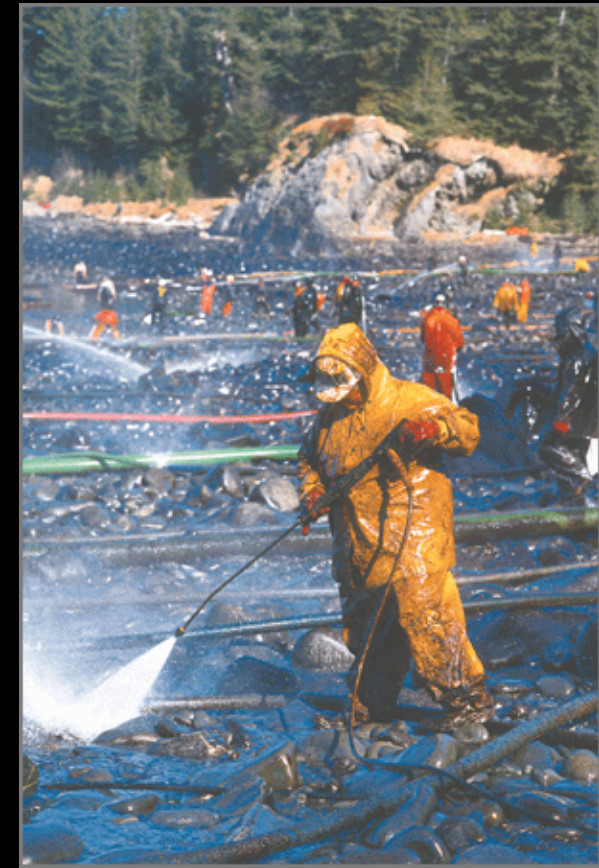
 Severely Affected Communities



25 0 25 50 75 100 Miles





















Alaska Oil Spill Commission  
Final Report

# SPILL

The Wreck of the *Exxon Valdez*

Implications for Safe Transportation of Oil



Report of the Alaska Oil Spill Commission  
Executive Summary

n Valdez  
Transportation









NOV 13 20



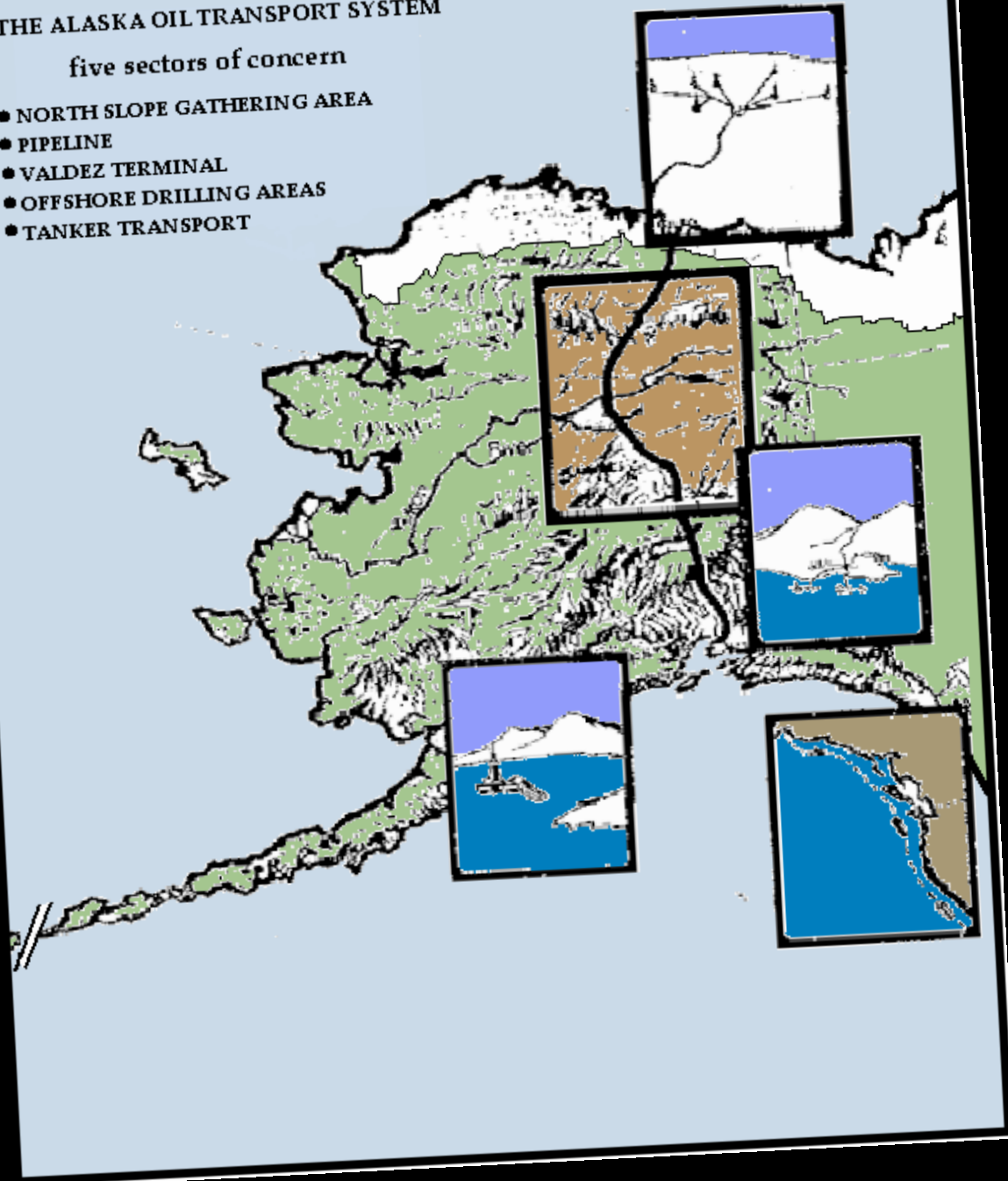
NOV 13 89



## THE ALASKA OIL TRANSPORT SYSTEM

five sectors of concern

- NORTH SLOPE GATHERING AREA
- PIPELINE
- VALDEZ TERMINAL
- OFFSHORE DRILLING AREAS
- TANKER TRANSPORT



State of Alaska Oil Spill  
commission report, 1989:

5 sectors of

“complacency,

...collusion,

...and neglect.”

World Geodetic System of 1984  
SOUNDINGS IN FATHOMS  
AT MEAN LOWER LOW WATER

NOTE F  
All Mariners are requested to exercise caution when navigating these waters. Erosions and Accretions, concentrations of rock piles and water grass, and numerous shifting sandbars are occurring in the area of Inuvialuk Entrance, Seal Rocks and Darwin Lead Rocks and Marmouk Island.

NOTE G  
Photographic and altimeter surveys by the United States Geological Survey from May 1972 to August 1976.

AIDS TO NAVIGATION  
Consult U.S. Coast Survey supplemental information for navigators.

CAUTION  
Mariners are urged to exercise extreme care when transiting the narrow channels and soundings north of Seal Rocks and Darwin Lead Rocks. 75% of the area shown is sand in these areas. 75% of the charted depths are not depths. Mariners should exercise extreme care when navigating in these areas. The presence of underwater obstructions is possible.

CAUTION  
Only marine radioisotopes are listed for surface use. Land-based sources are not listed. Mariners should exercise extreme care when navigating in these areas. The presence of underwater obstructions is possible.

COLLISIONS  
All 1700 ton commercial ships are prohibited from transiting the narrow channels and soundings north of Seal Rocks and Darwin Lead Rocks.











