

Water Quality Framework

2011 - 2012

2012-2013

2013

2014

2015 to
Present

State Integrated Report Data Management Practices

- **We asked questions to better understand how assessment decisions and the associated geospatial information is tracked**
- **We asked questions about how assessment units are delineated**

What We Learned

**One Size
Doesn't Fit All**



Now What?



Water Quality Framework

2011 - 2012

2012-2013

2013

2014

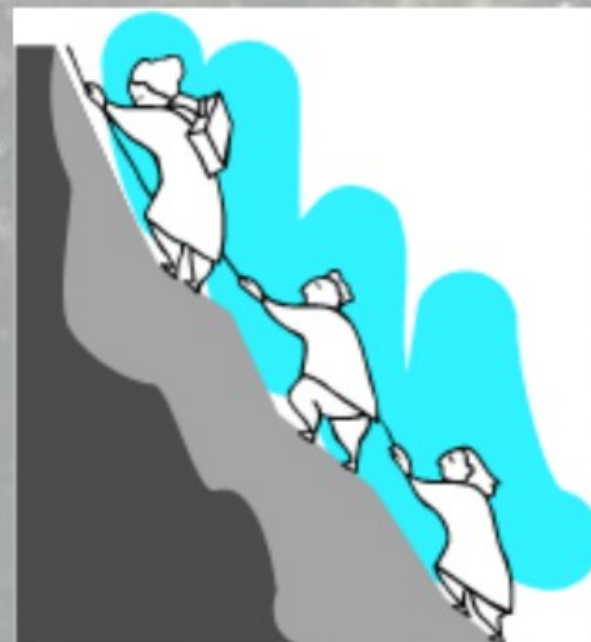
2015 to
Present

Reducing Reporting Burden Under CWA Sections 303(d) and 305(b)

What We Heard:

The IR Process is Not Efficient, specifically:

- Review and use of available data to make assessment decisions
- Preparation and submission of IR (including) data
- Preparation and refinement of assessment and listing methodology
- Response to public comments



We Were Reminded That

**One Size
Doesn't Fit All**



A photograph of a person wearing a white hoodie, looking at a laptop screen. The background is a blurred outdoor scene with green foliage. The image is semi-transparent, allowing the text to be overlaid.

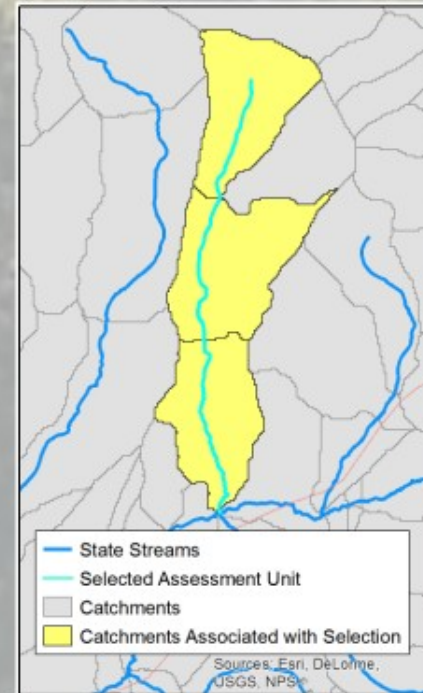
Integrated Reporting Georeferencing Pilot

Automating Integrated Reporting Geospatial Data Processing

Goals

- Reduce Costs
- Improve Timeliness
- Maintain Quality
- Improve Completeness

Recommendation: Catchment Based Indexing to Support Performance Measures



A photograph of a person wearing a white protective suit, including a hood and gloves, working in a field. The person is leaning over, possibly sampling or examining the ground. The background shows green foliage and trees, suggesting an outdoor, natural setting. The image is slightly faded to allow the text to be read clearly.

Develop Performance Measure to Support 303(d) and TMDL Program

Water Quality Framework

2011 - 2012

2012-2013

2013

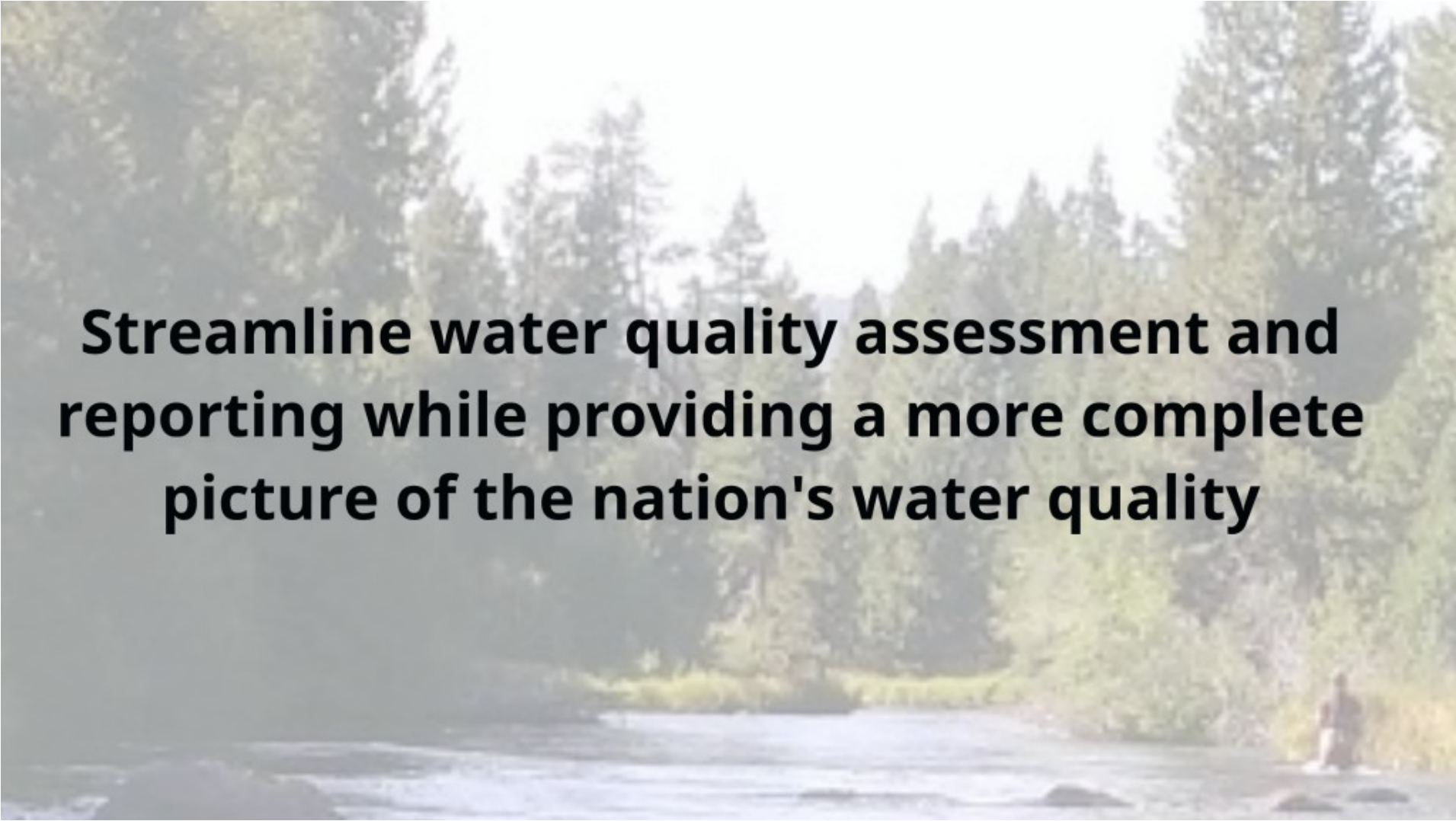
2014

2015 to
Present



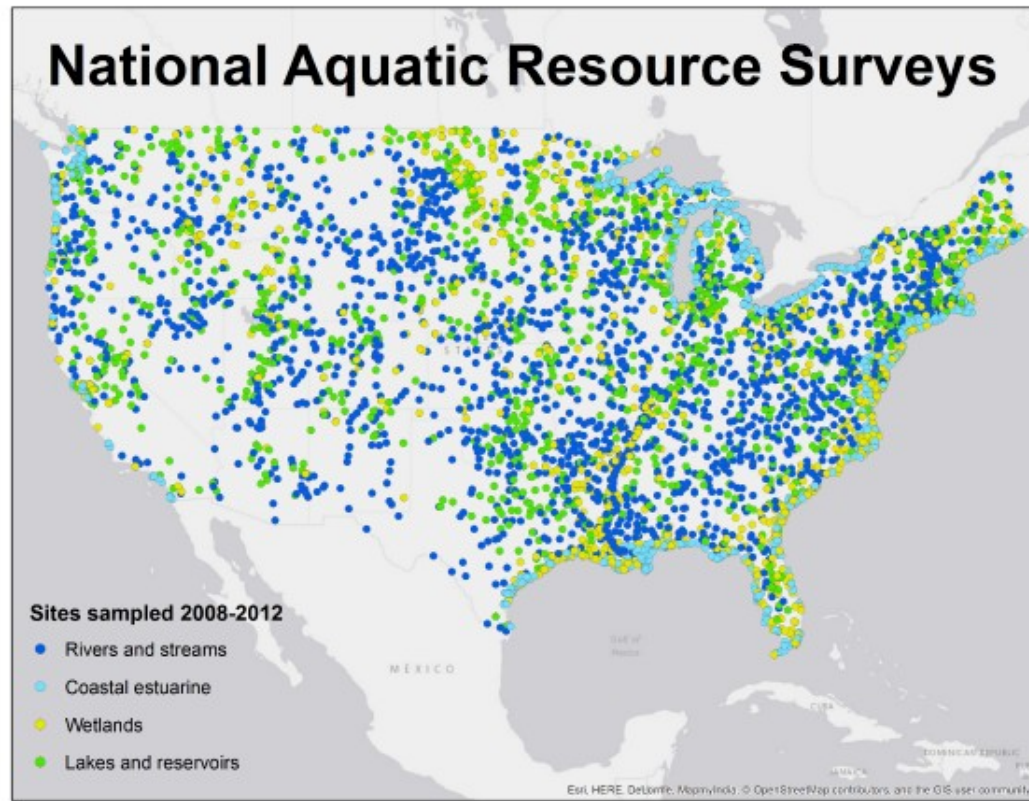
Introduced the Water Quality Framework



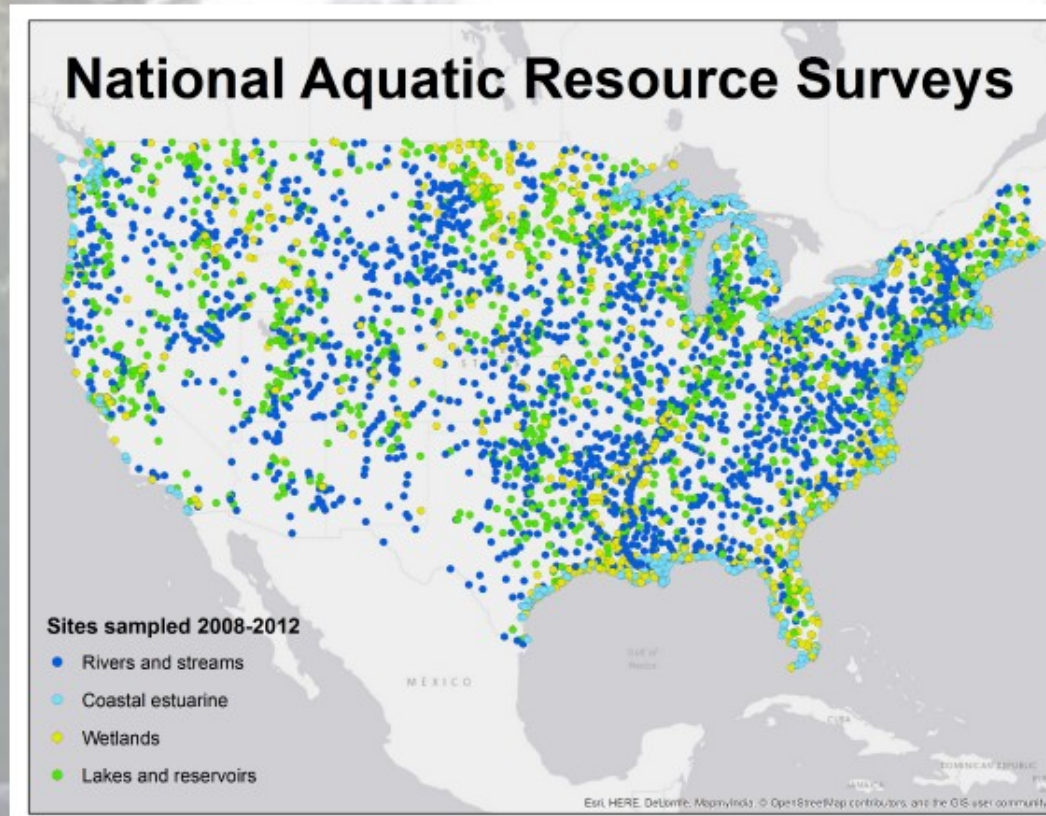


Streamline water quality assessment and reporting while providing a more complete picture of the nation's water quality

National Aquatic Resource Surveys



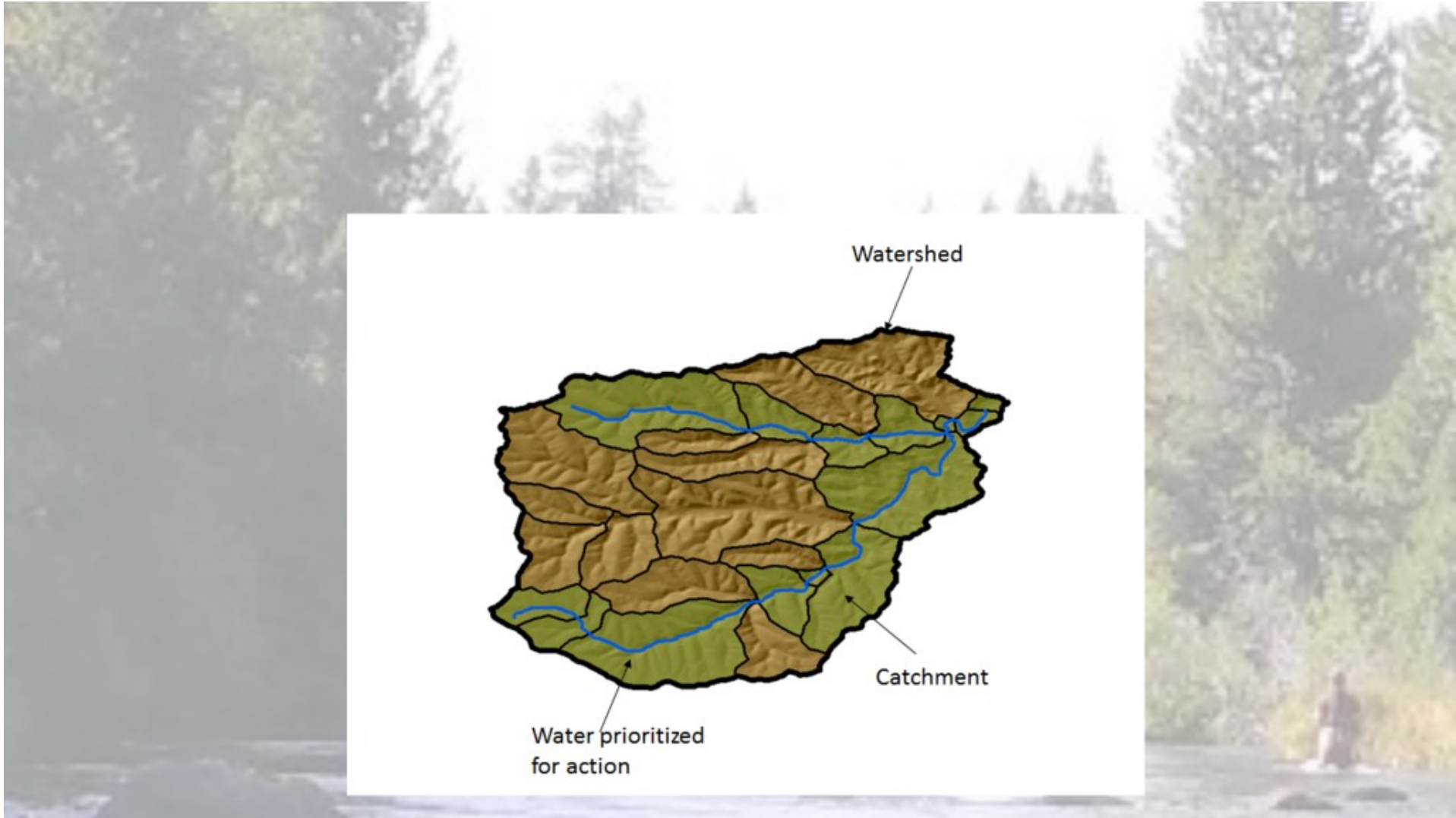
National and State-Level Surveys



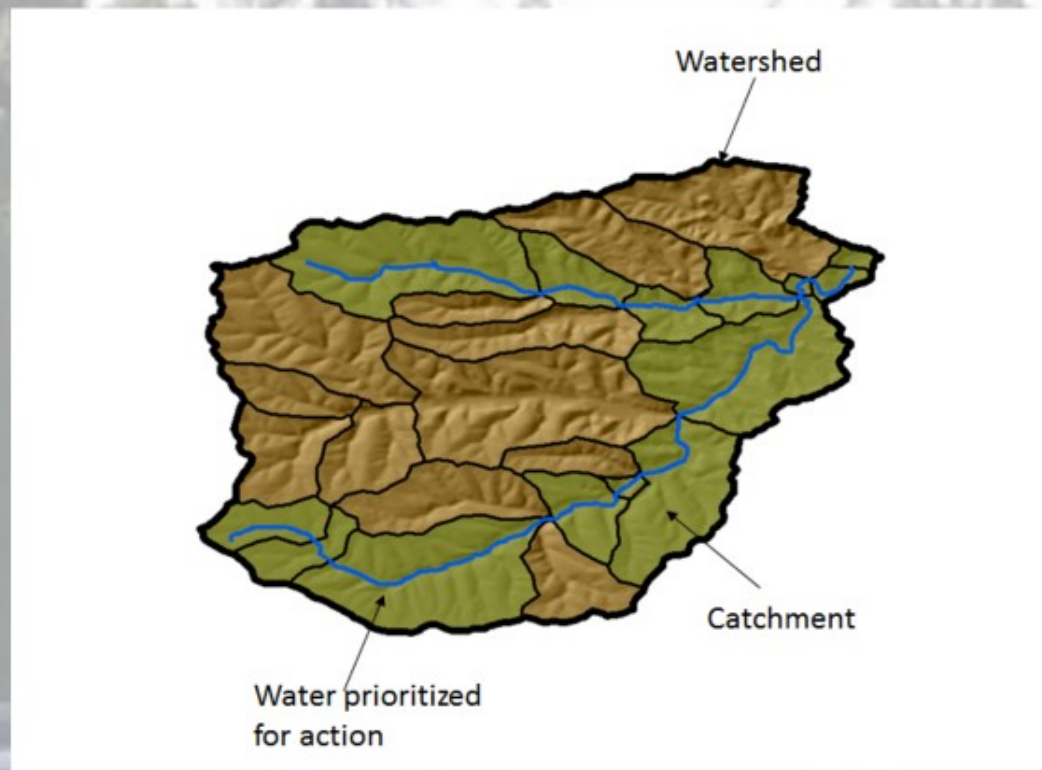


Local Assessments and Decision Process





Connecting Water Quality Decisions with the Landscape



Water Quality Framework

2011 - 2012

2012-2013

2013

2014

2015 to
Present

Then What?

We Continued to Listen



Water Quality Framework

2011 - 2012

2012-2013

2013

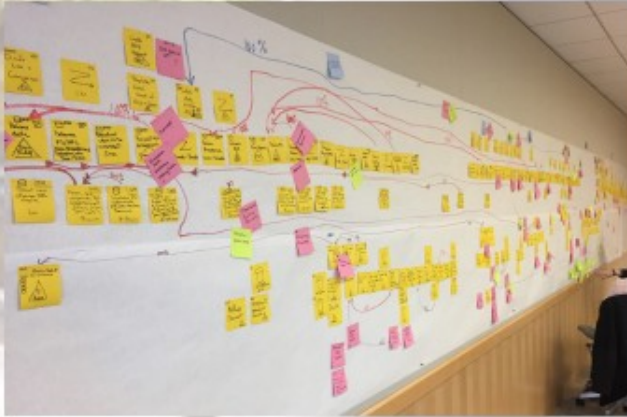
2014

2015 to
Present

ATTAINS LEAN (2015)



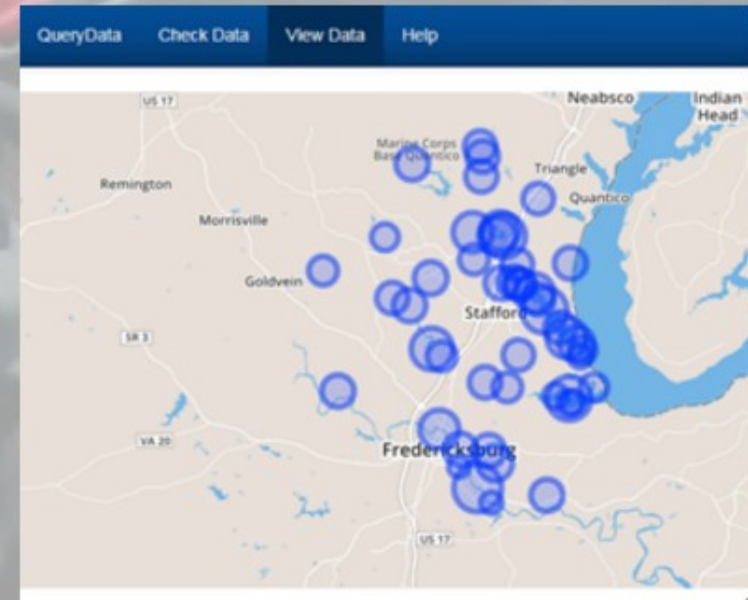
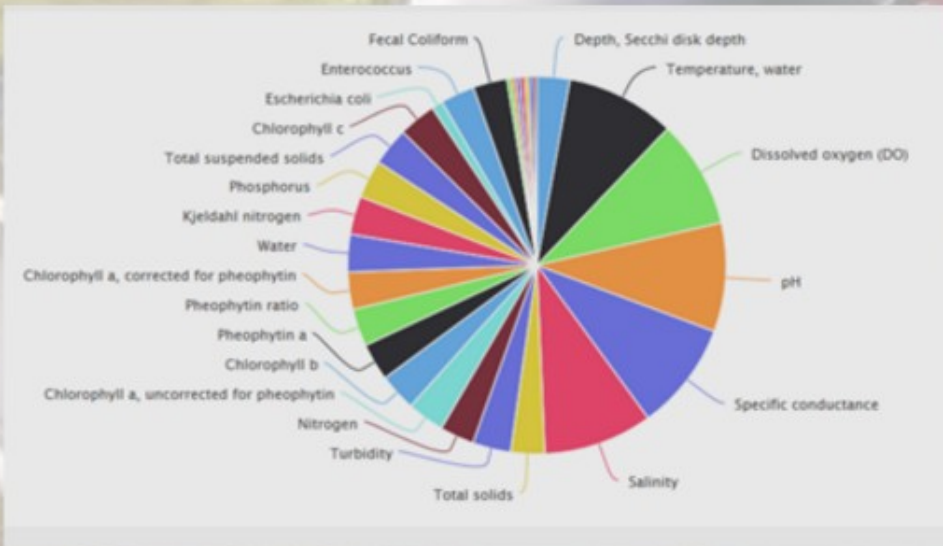
ATTAINS LEAN (2015)



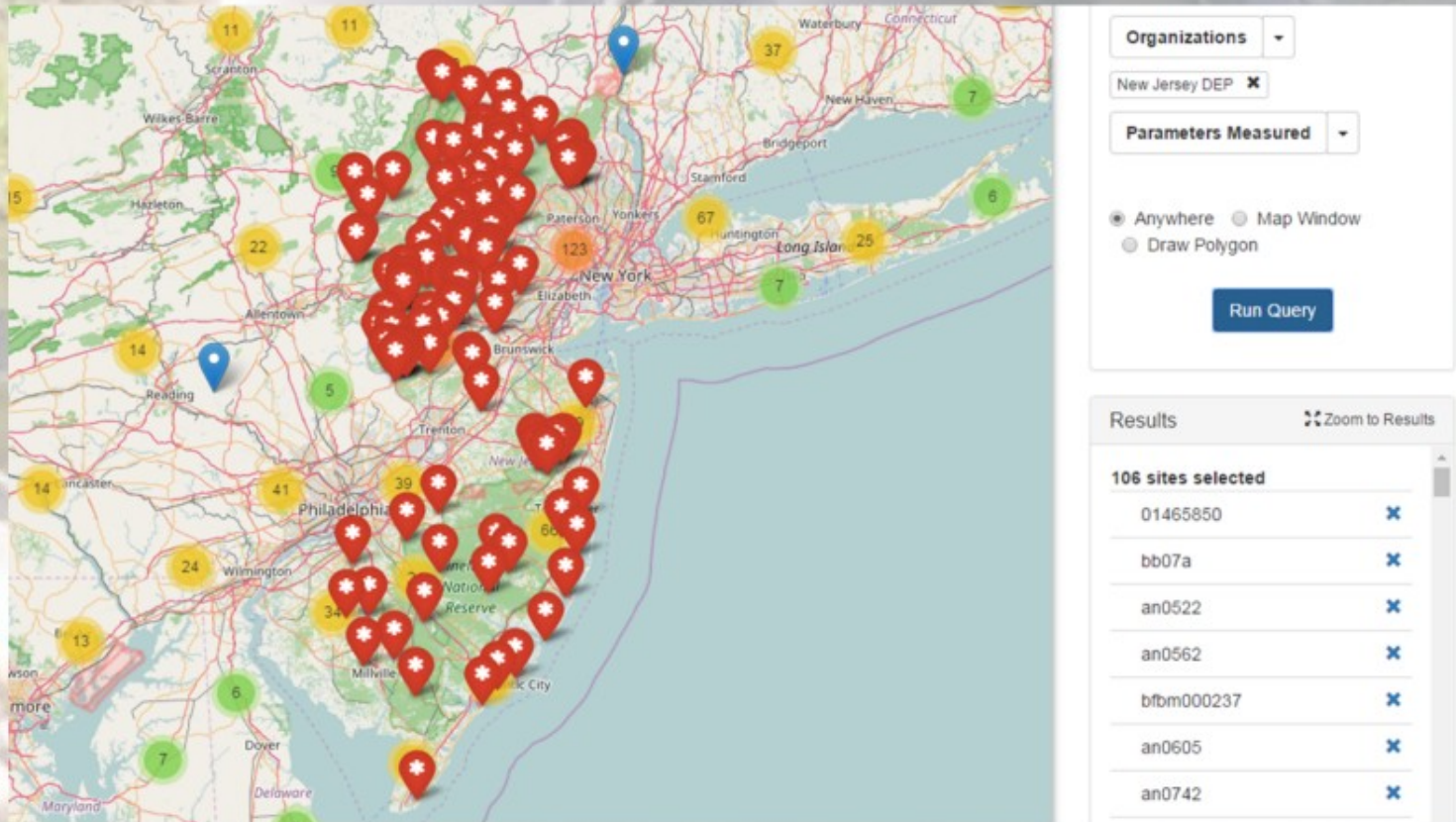
Water Quality Exchange / Water Quality Portal

The screenshot displays the Water Quality Portal interface. On the left, there are search filters for LOCATION (Country, State, County) and SITE PARAMETERS (Site Type, Organization ID, Site ID, HUC). Below these are SAMPLING PARAMETERS (Sample Media, Characteristic Group, Characteristic, Project ID, Parameter Code, Minimum results per site, Date range, Biological sampling parameters, Assembly, Taxonomic Name). In the center is a map showing sampling locations with a legend for Data Legend (RAW Data, Biological Data, Stream Data, STORED Data). On the right, there is a panel for 'Water Quality Data' with sections for 'Data Legend', 'Results', and 'Data Download'. The 'Data Download' section includes options for 'Select data to download' (Site data only, Sample results (physical/chemical/metals), Sample results (biological/metals)), 'File format' (Comma separated, MS Excel 2007+, KML (requires browser plugin - for file only)), and 'Sort data'. A 'DOWNLOAD' button is visible at the bottom left of the map area.

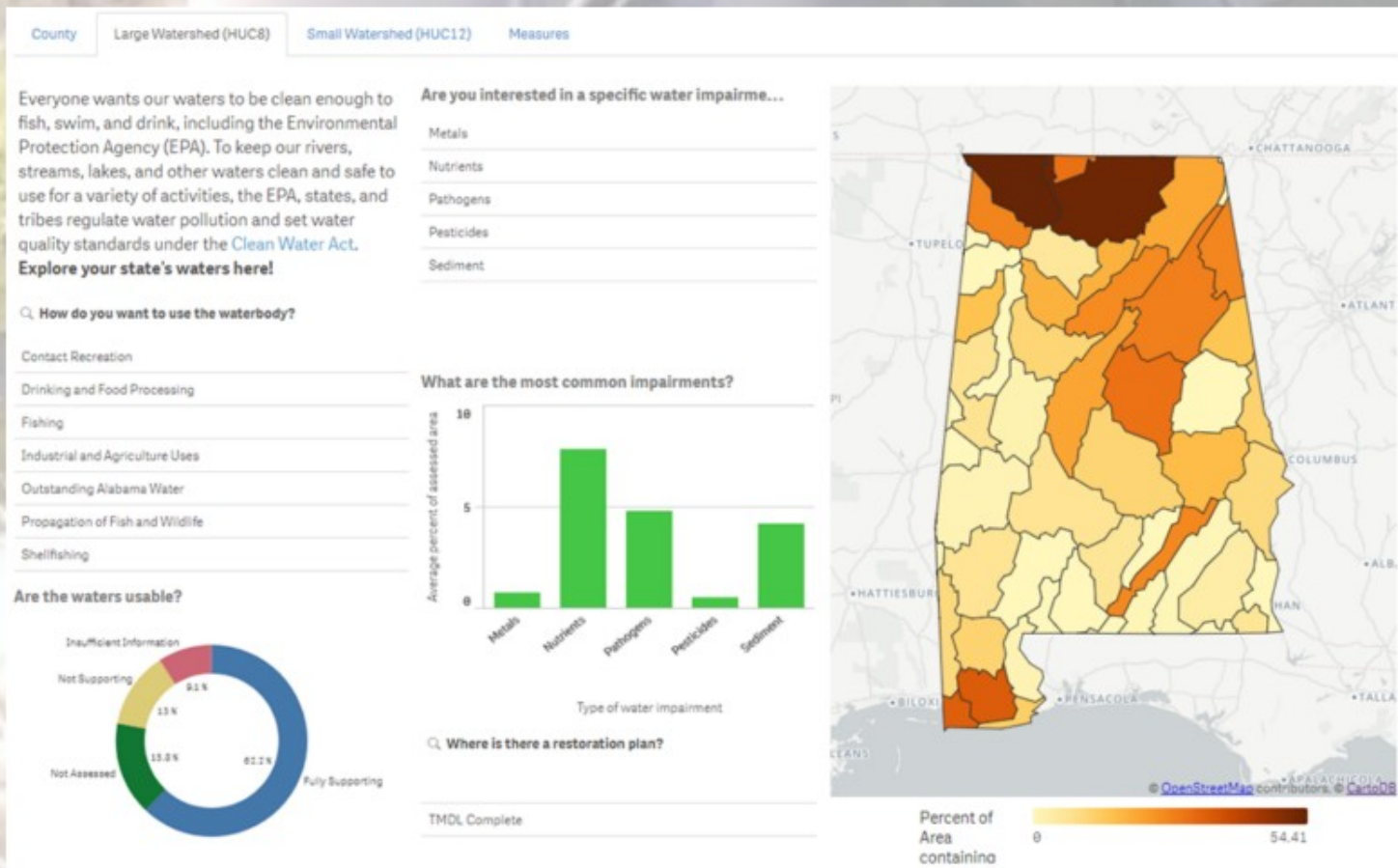
Open-Source Data Discovery and Data Analysis




Continuous Monitoring Data



Telling the Water Quality Story



A person wearing a wetsuit is on a boat, holding a large crab. The background shows a body of water and trees. The image is semi-transparent, allowing text to be overlaid.

May 31 to June 2, 2017
**The National Water Quality Data
Management Training Workshop**

**Implementing the Water Quality Framework
and the New ATTAINS**

Water Quality Framework

2011 - 2012

2012-2013

2013

2014

2015 to
Present