

# State and Tribal Cooperative Work at Red Lake Reservation, MN.

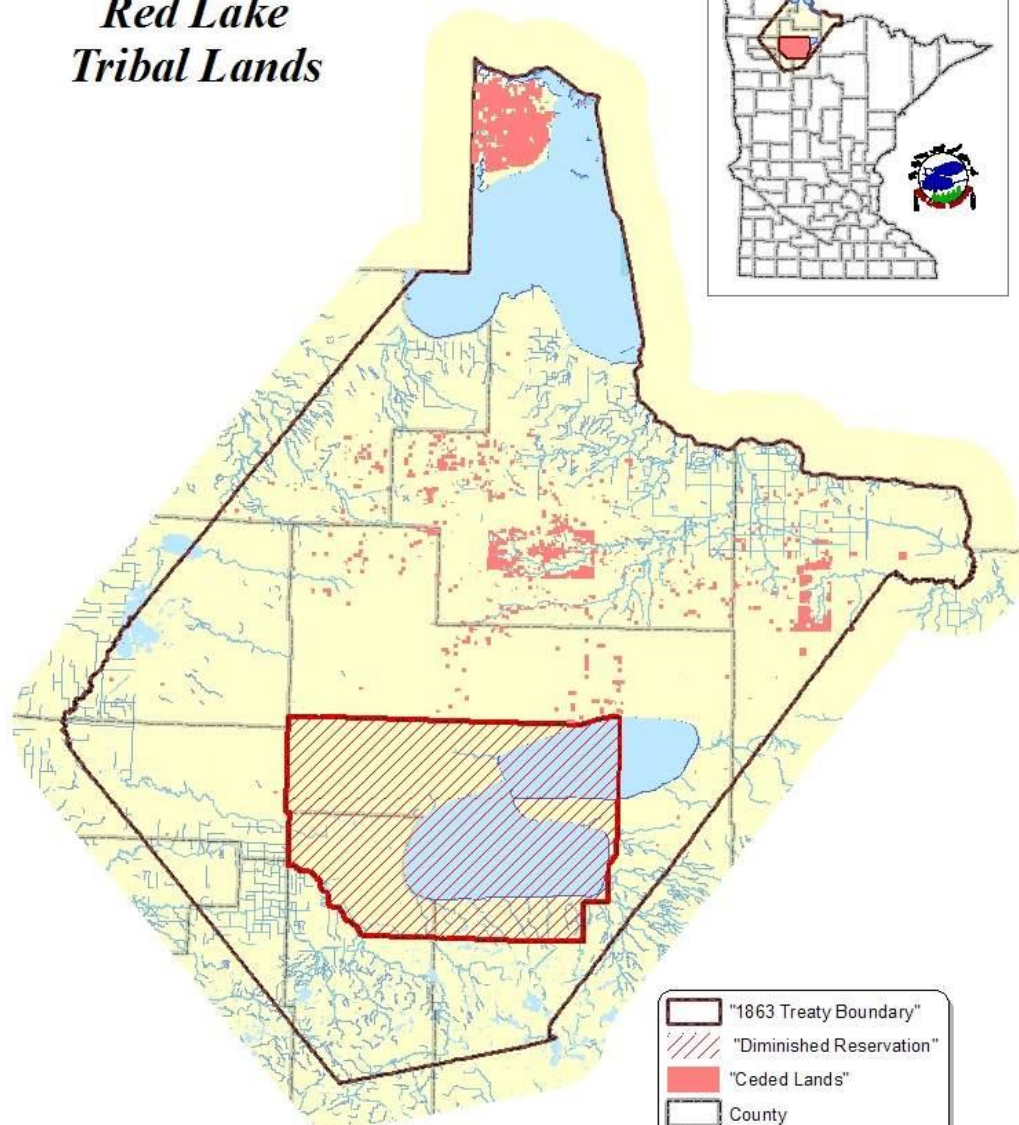


Shane Bowe, RL DNR Water Resources  
Jim Courneya, MN PCA

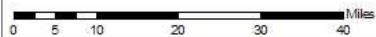
# Introduction

- Red Lake Reservation description
- Examples of cooperative efforts
- WRAPS (Watershed Restoration and Protection Strategy)
- Impairment of shared waters
- Moving forward

# Red Lake Tribal Lands



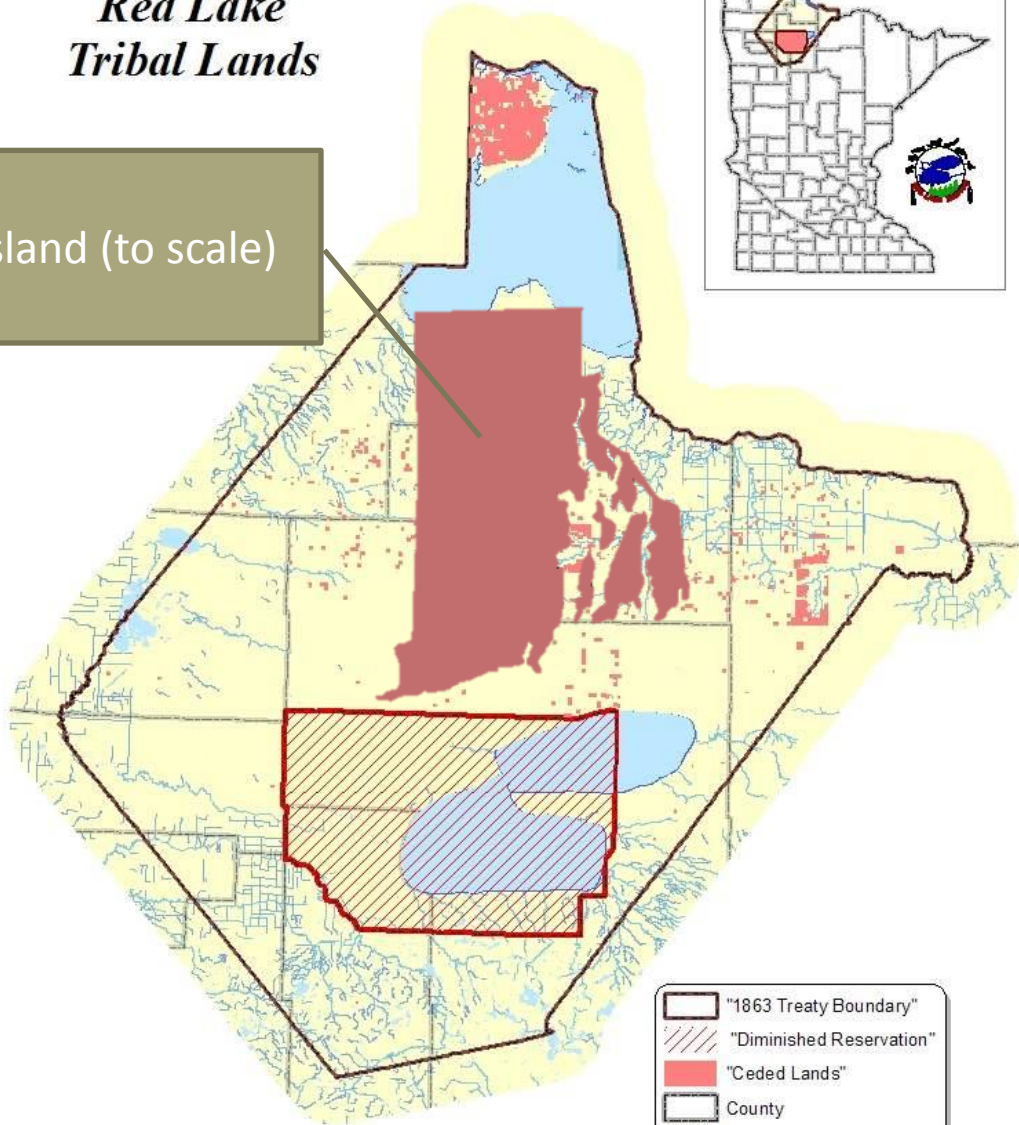
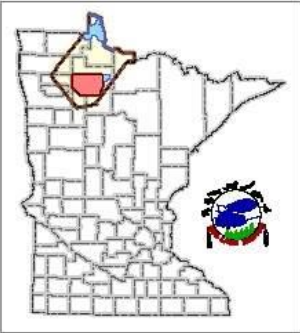
-  "1863 Treaty Boundary"
-  "Diminished Reservation"
-  "Ceded Lands"
-  County
-  Lakes, Rivers, Streams



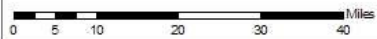
We at Red Lake DNR make every effort to depict information on this map completely and accurately. Red Lake DNR provides no warranty, expressed or implied, as to the accuracy, reliability or completeness of these data. The user assumes all responsibility and the Red Lake DNR harmless for all conditions and outcomes, direct or indirect, arising from the use of this map.

# Red Lake Tribal Lands

Rhode Island (to scale)



-  "1863 Treaty Boundary"
-  "Diminished Reservation"
-  "Ceded Lands"
-  County
-  Lakes, Rivers, Streams

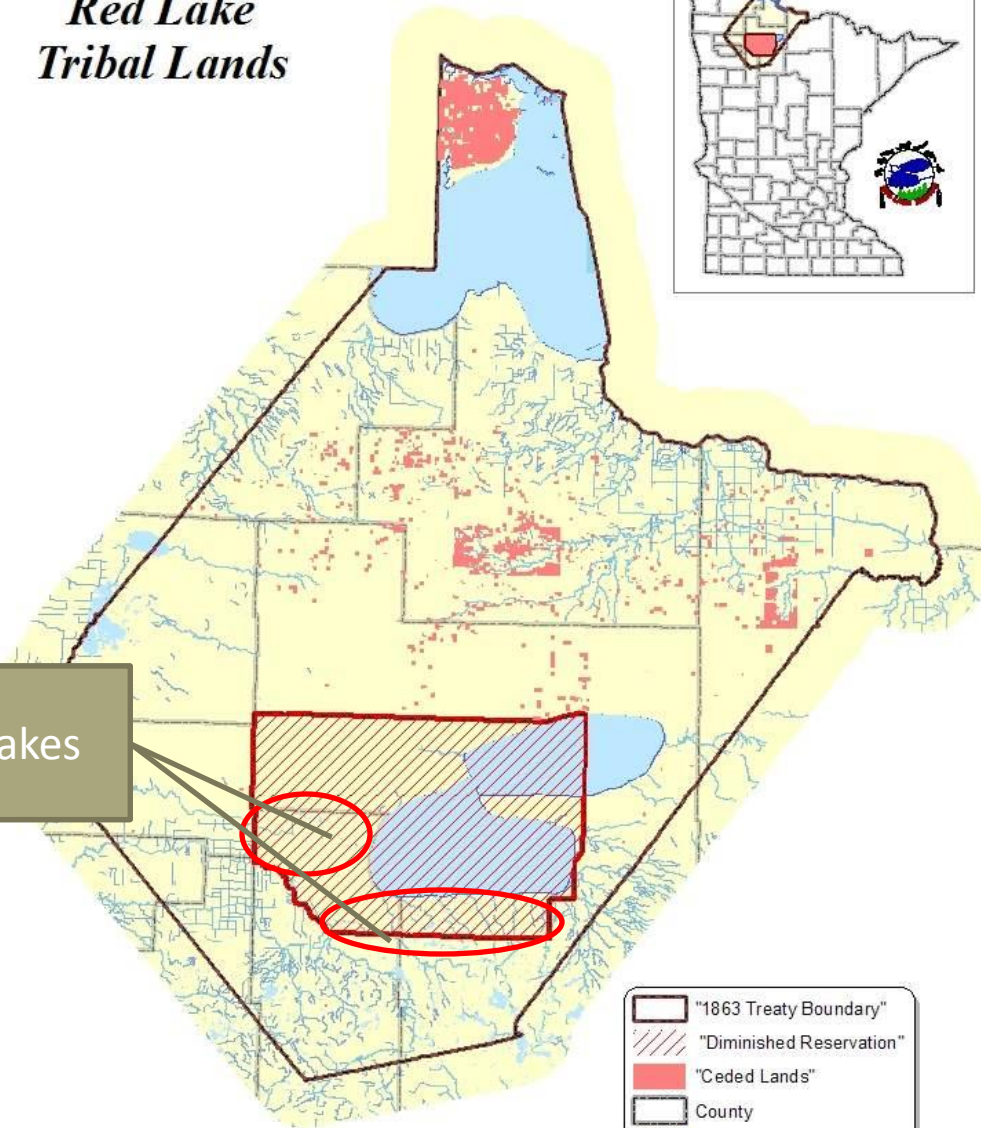


We at Red Lake DNR make every effort to depict information on this map completely and accurately. Red Lake DNR provides no warranty, expressed or implied, as to the accuracy, reliability or completeness of these data. The user assumes all responsibility and the Red Lake DNR harmless for all conditions and outcomes, direct or indirect, arising from the use of this map.

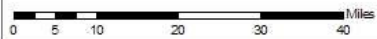
# Red Lake Tribal Lands



Small Lakes



- 1863 Treaty Boundary
- Diminished Reservation
- Ceded Lands
- County
- Lakes, Rivers, Streams



We at Red Lake DNR make every effort to depict information on this map completely and accurately. Red Lake DNR provides no warranty, expressed or implied, as to the accuracy, reliability or completeness of these data. The user assumes all responsibility and the Red Lake DNR harmless for all conditions and outcomes, direct or indirect, arising from the use of this map.

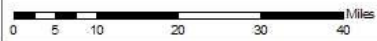
# Red Lake Tribal Lands



Small Lakes

Red Lakes

-  "1863 Treaty Boundary"
-  "Diminished Reservation"
-  "Ceded Lands"
-  County
-  Lakes, Rivers, Streams



We at Red Lake DNR make every effort to depict information on this map completely and accurately. Red Lake DNR provides no warranty, expressed or implied, as to the accuracy, reliability or completeness of these data. The user assumes all responsibility and the Red Lake DNR harmless for all conditions and outcomes, direct or indirect, arising from the use of this map.

# Red Lake Tribal Lands

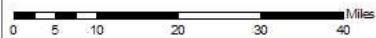
Lake of the Woods



Small Lakes

Red Lakes

- 1863 Treaty Boundary
- Diminished Reservation
- Ceded Lands
- County
- Lakes, Rivers, Streams



We at Red Lake DNR make every effort to depict information on this map completely and accurately. Red Lake DNR provides no warranty, expressed or implied, as to the accuracy, reliability or completeness of these data. The user assumes all responsibility and the Red Lake DNR harmless for all conditions and outcomes, direct or indirect, arising from the use of this map.





# Examples of Cooperative Efforts

- Long history of combined monitoring effort in the watershed
- MPCA assisted Red Lake in developing draft WQS in the 90s
- Bioassessment
- Watershed Assessment Team – determines appropriate data for impairment determination
- Data sharing
- WRAPS

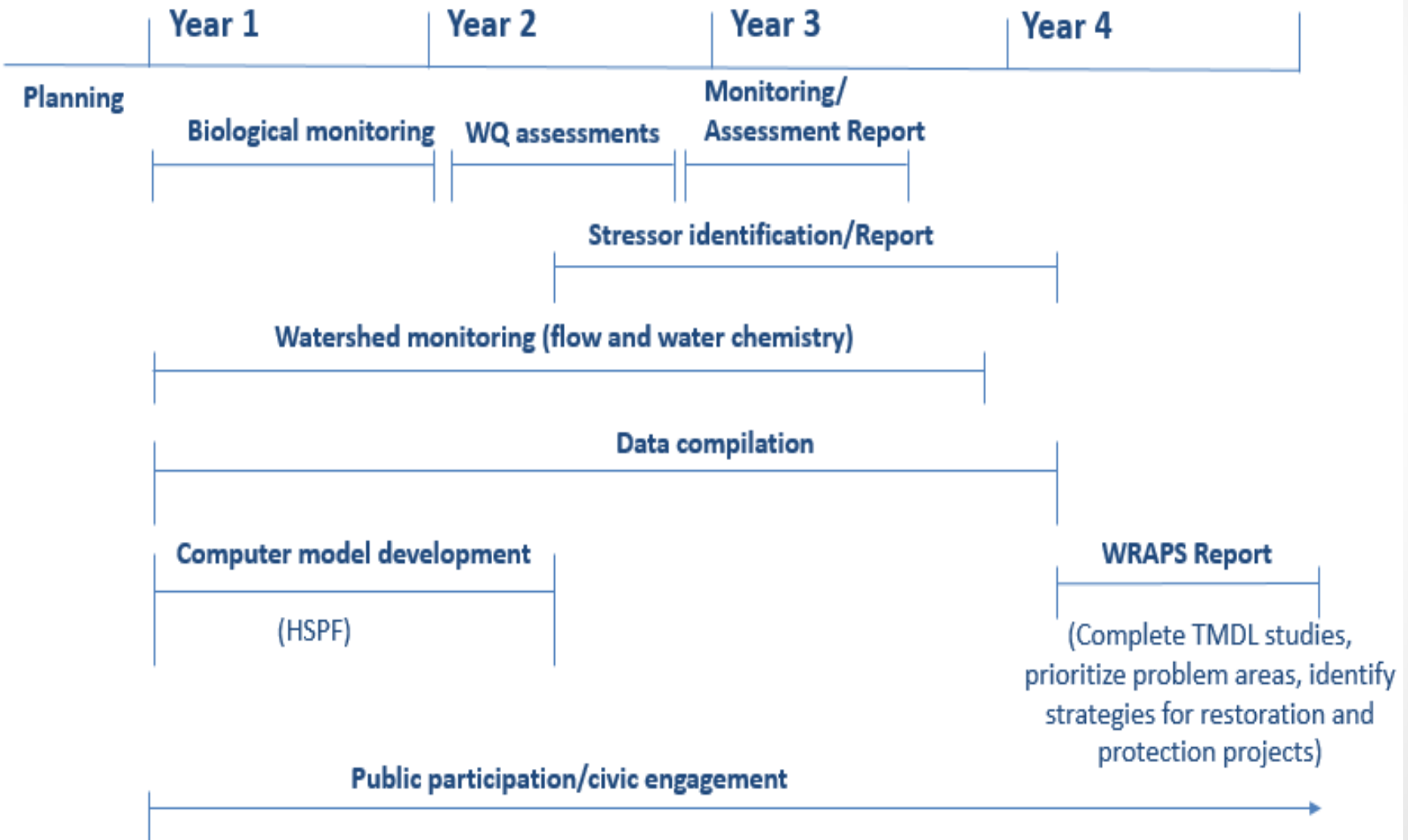
# WRAPS Components

- Intensive Watershed Monitoring Assessment
- Stressor Identification
- Watershed Model (Hydrologic Simulation Program Fortran – HSPF)
- TMDL Study
- WRAPS Report
- Public Participation

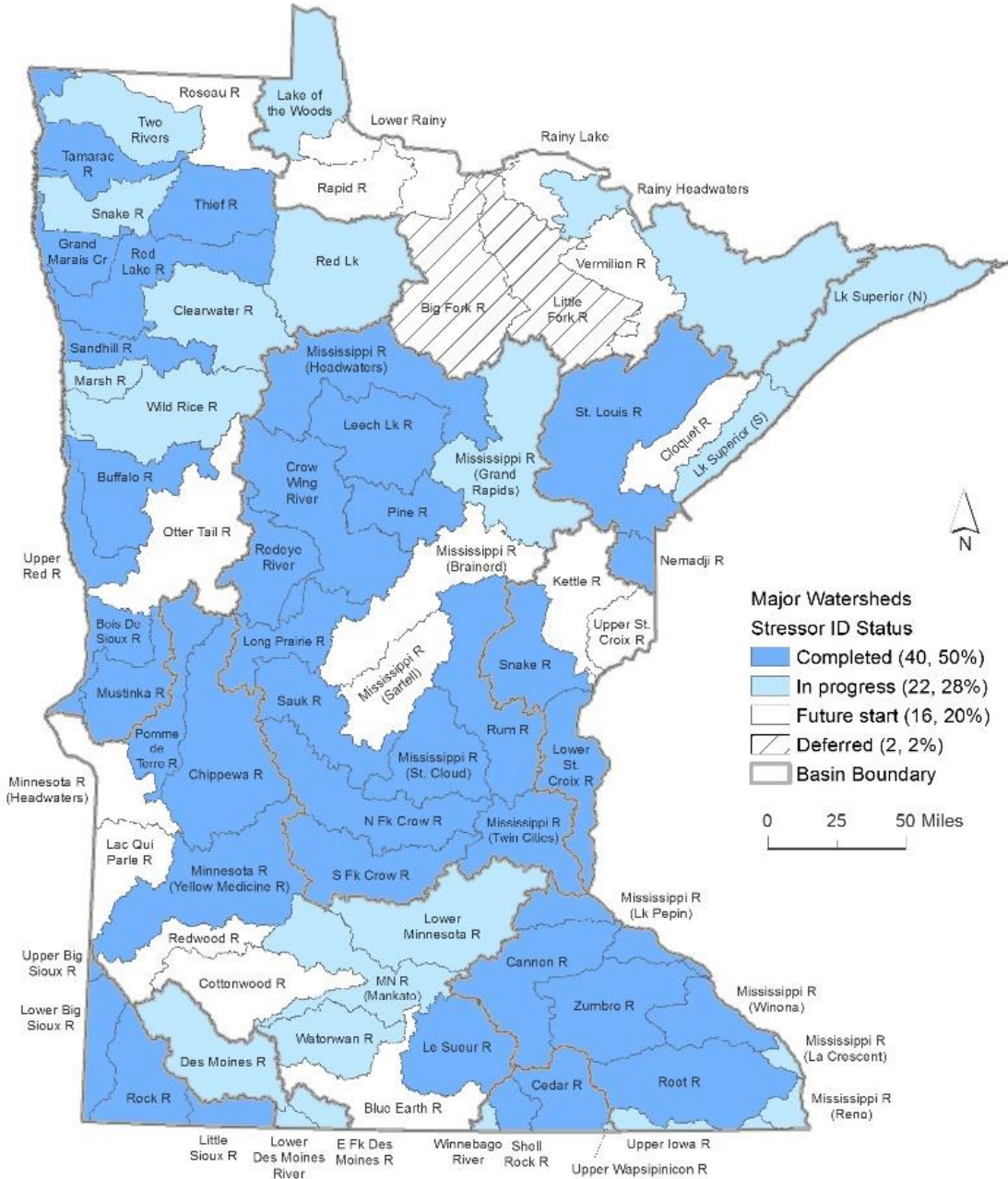
# The WRAPS (Watershed Restoration and Protection Strategy) process

Generalized work elements and timeline

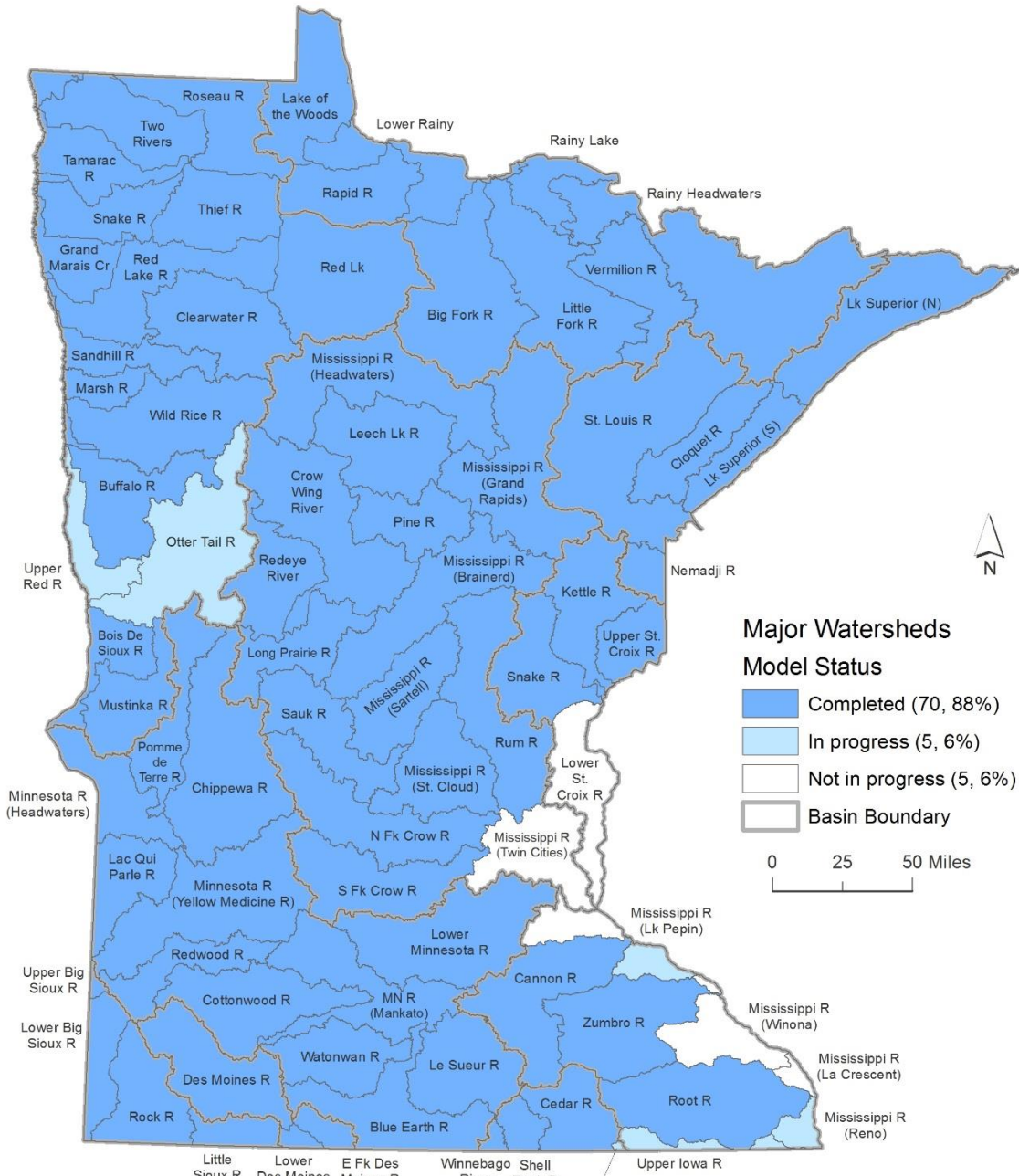
Intensive watershed  
monitoring starts



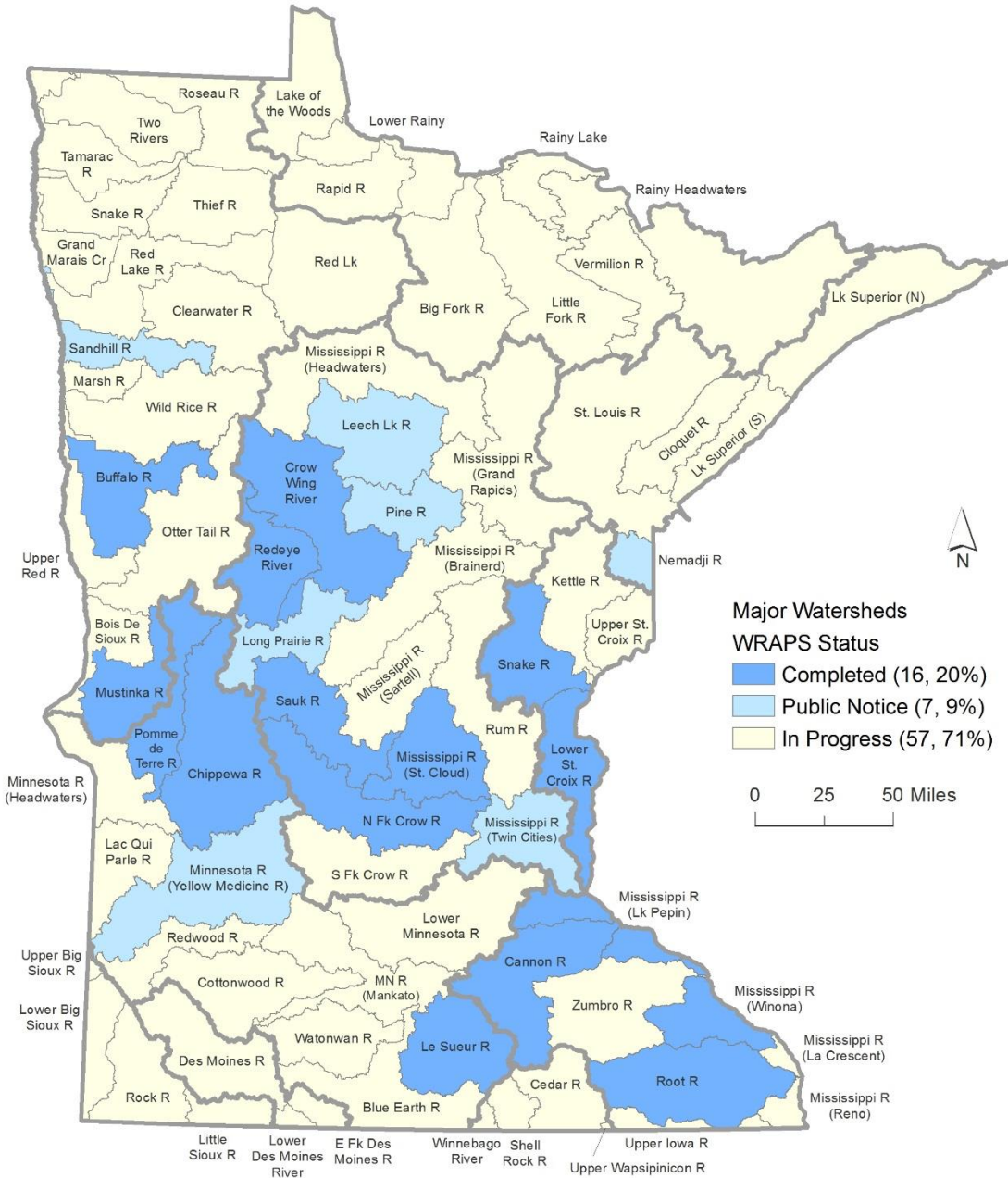
# Biological Stressor Identification



# HSPF Models in Minnesota

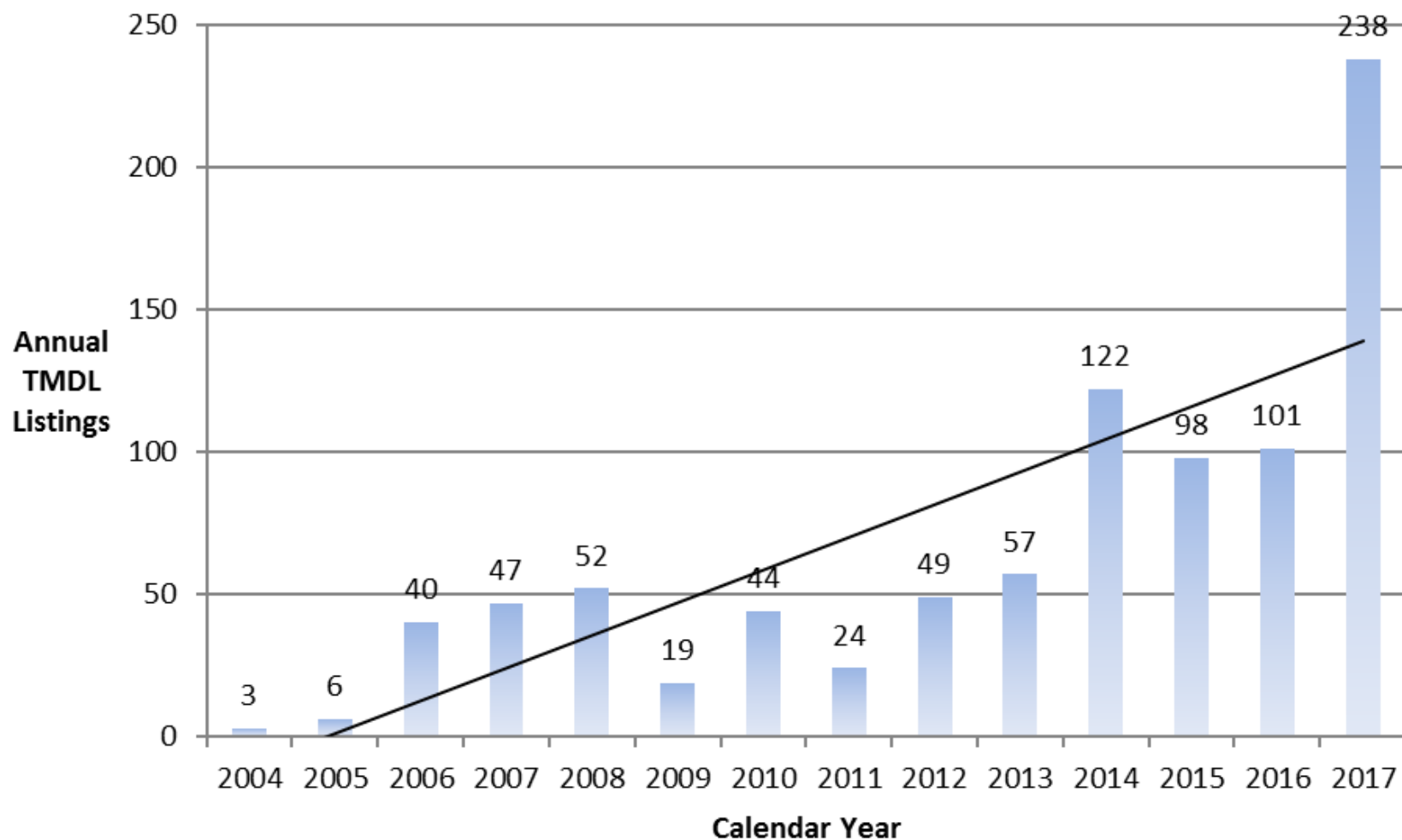


# Watershed Restoration and Protection Strategies (WRAPS)



# Approved TMDLs in Minnesota

April 2017



# Impairment of Shared Waters

- MPCA policy regarding shared jurisdiction and tribal jurisdiction.
- Upper and Lower Red Lake are not meeting the state's criteria.
- Cooperative decision
- Moving forward with a study to determine site specific standards without listing
- Resulted in an effort by Red Lake Tribal DNR to develop an MOU for all shared waters
  - This effort is underway now



# Moving Forward

- Complete WRAPS by 2019
- Fund Site Specific Standard Study for Lake
- Cooperate With BWSR on Implementation activities if desired by Tribe
- Explore Possibility of Cooperation in a One Watershed – One Plan effort if desired by Tribe.
- Cycle 2 – Monitoring and Assessment
- MOU and water quality standards

The logo consists of a dark blue silhouette of the state of Oregon in the background. Overlaid on the map is a stylized flower with several petals in white, red, yellow, and black. Green leaf-like shapes are scattered around the flower. A light beige banner with a slight 3D effect is positioned across the middle of the flower and map.

**Tribal-State Relations Training**  
*Government to Government*