

Redefining Segmentation

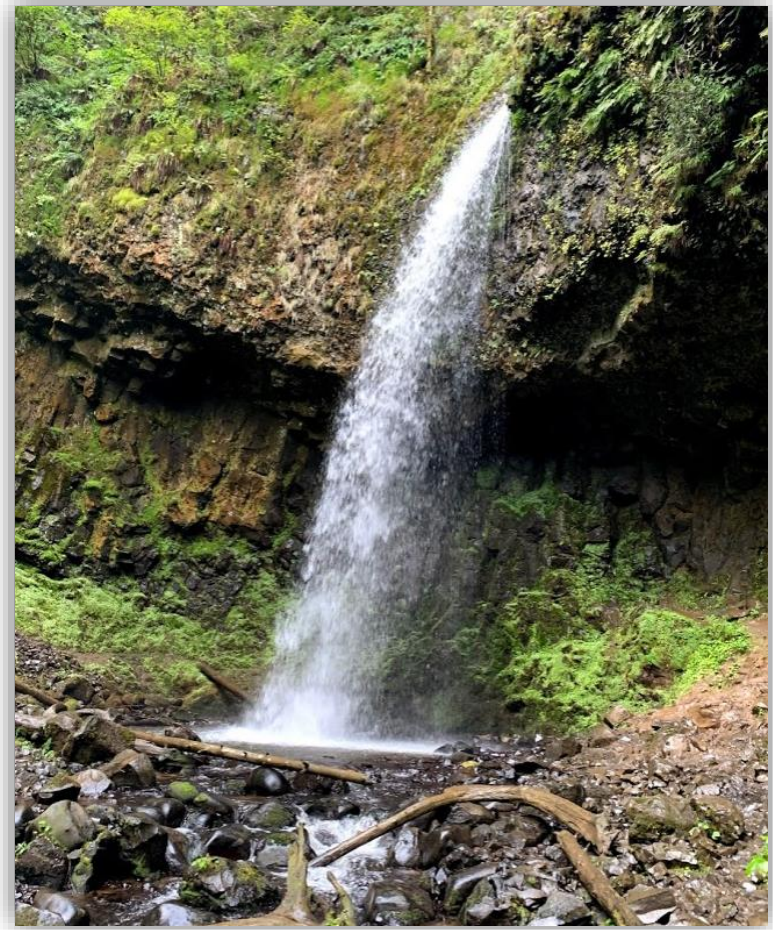
Oregon's Story

June 10, 2021

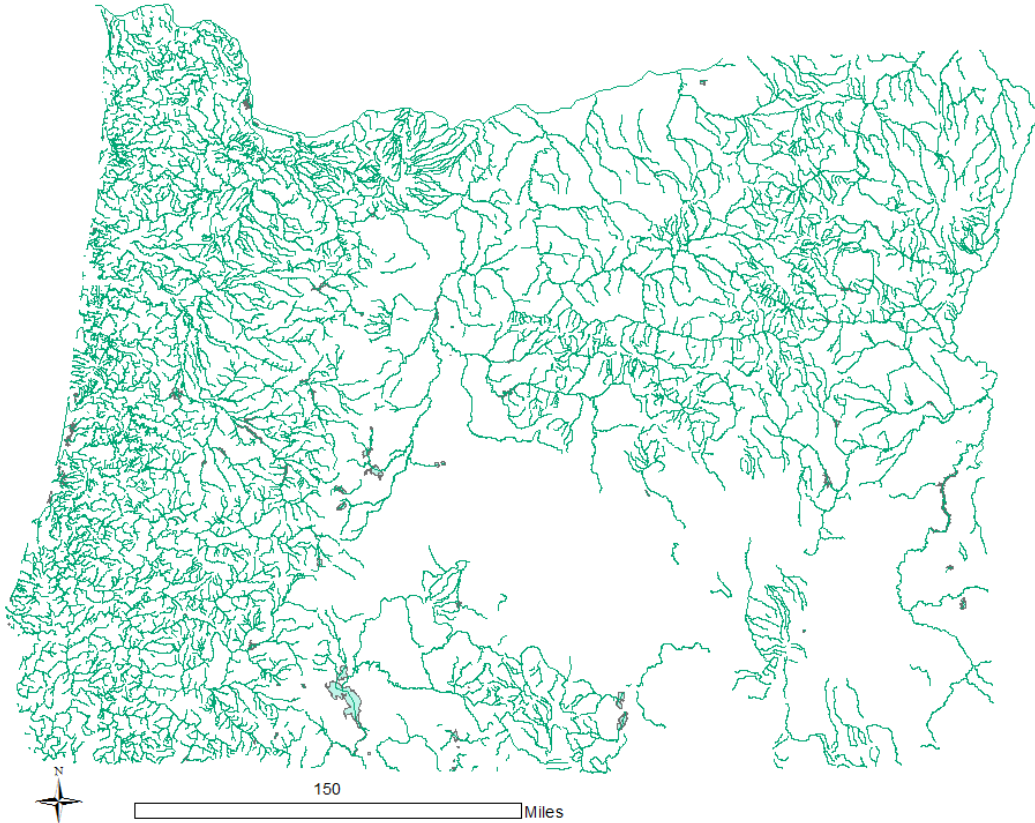


Motivation to Change

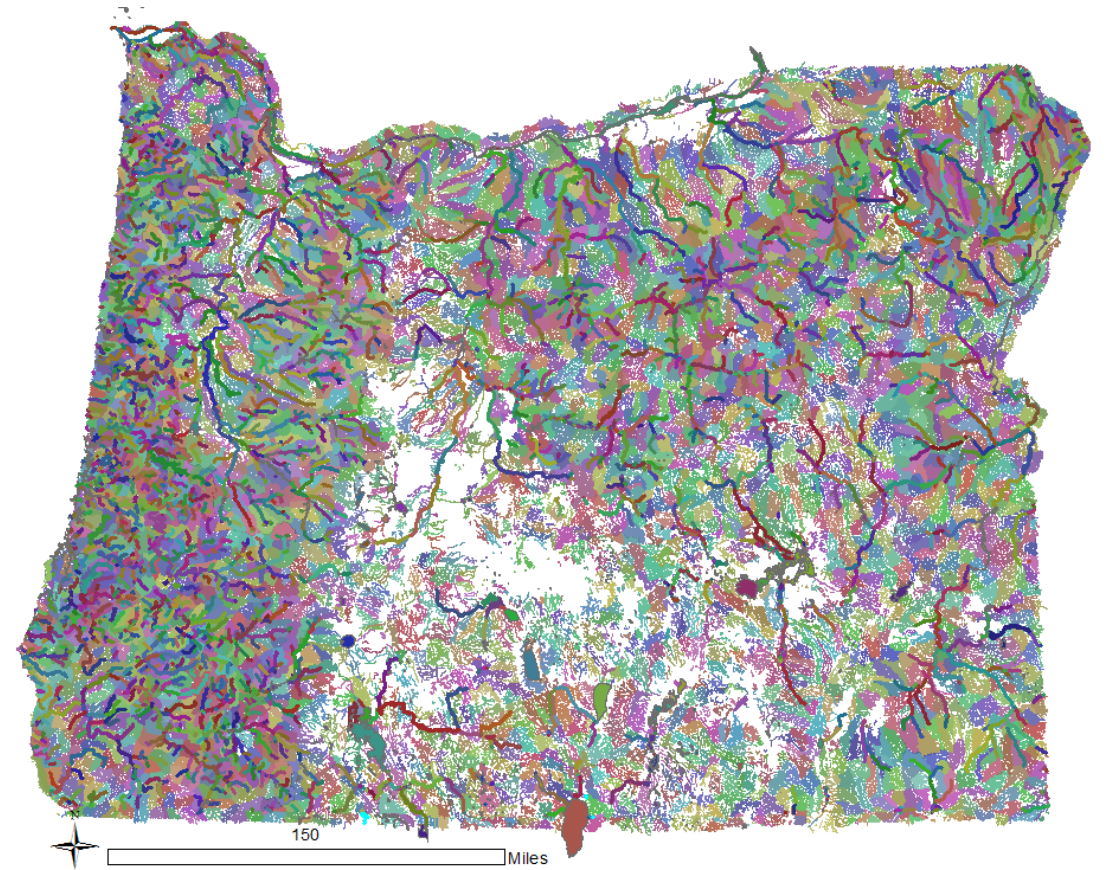
- Redefined segments each cycle
- Segment extent differed by parameter and assessment cycle
- Incompatible with ATTAINS



Segmentation → Assessment Units



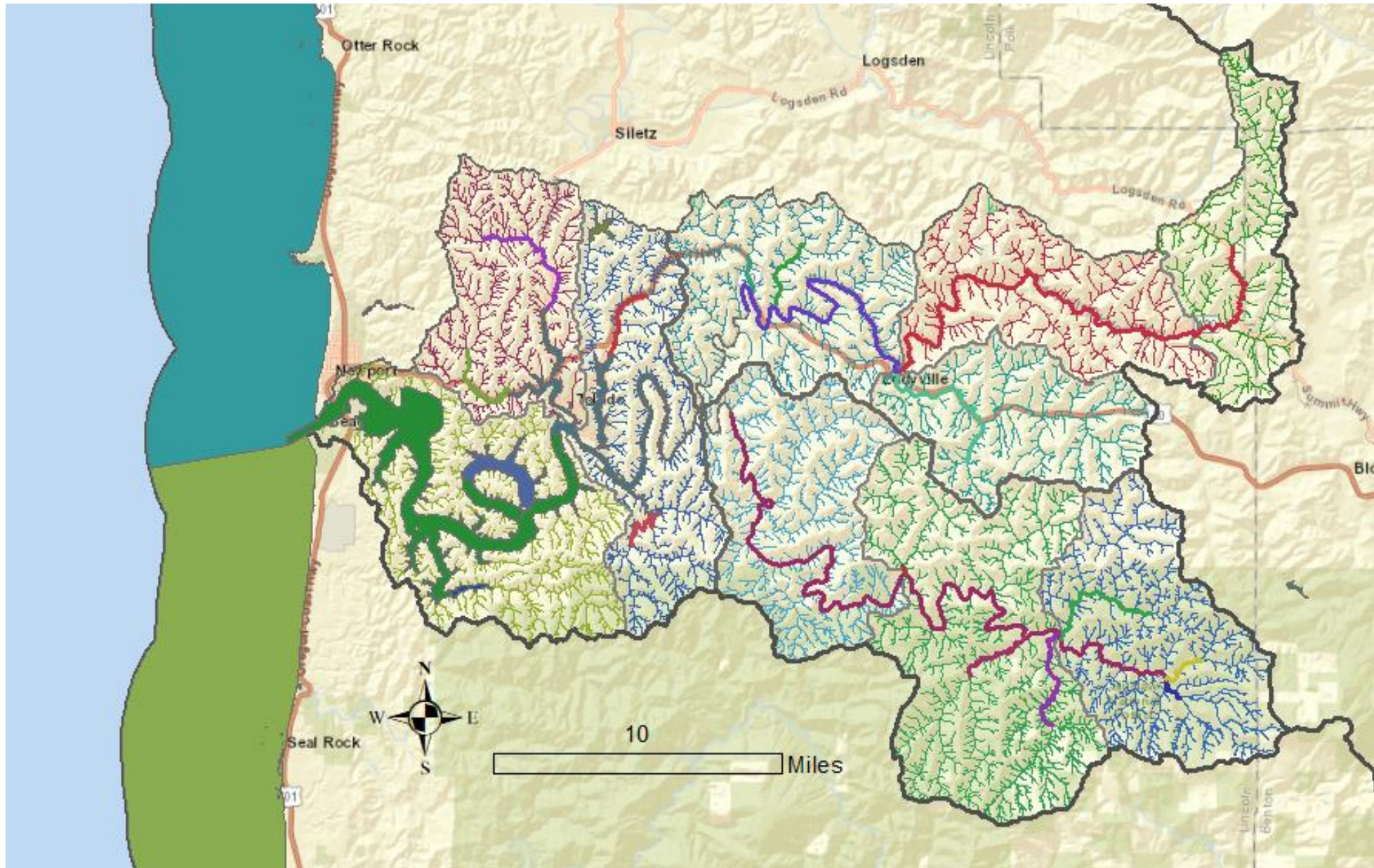
Defined Segments in 2012



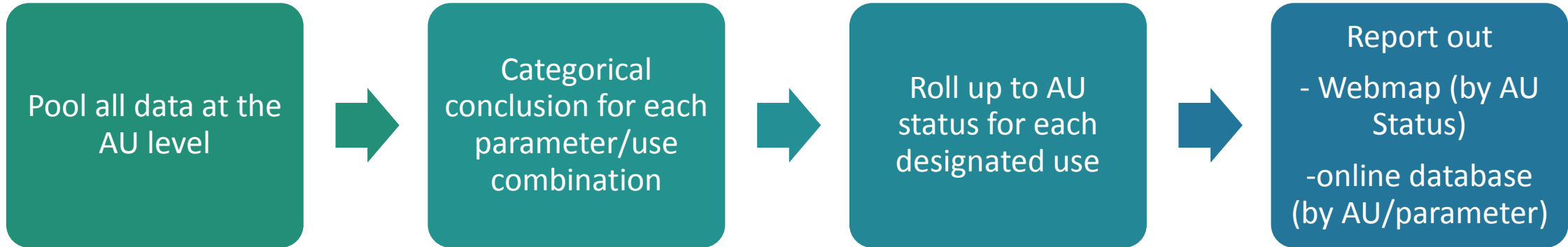
New Assessment Units

5 Types of Assessment Units

- River and Stream - Medium to large streams ($\geq 5^{\text{th}}$ Order)
 - Change in designated uses
 - Stream order change
 - HUC 10 Boundary (watershed)
- Watershed - Small, typically headwater streams (≤ 4 Order)
 - HUC-12 (Sub-watershed)
- Waterbodies
 - Lakes – defined by NHDH polygon
 - Reservoirs - defined by NHDH polygon
 - Estuaries – divided by applicable bacteria criteria
- Coastline
 - Used EPA beaches as starting point and filled in the gaps
- Oregon territorial marine waters
 - NHDH Waterbody feature (HUC8 extended to marine waters)



2020 Methodology



OR_SR_1710020401_02_105951

AU ID: OR_SR_1710020401_02_105951
AU Name: Yaquina River
AU Description: Little Yaquina River to Little Elk Creek
Year Last Assessed: 2018
AU Status: Impaired
Impaired Uses: Fish and Aquatic Life; Water Contact Recreation
Year Listed: 2010
Category 5: Temperature- Year Round; Temperature-Spawning; E. coli; Dissolved Oxygen- Spawning; Fecal Coliform
Category 4(B,C): ,

[Add to Results](#) | [View Additional Details](#)

2020 Lesson Learned

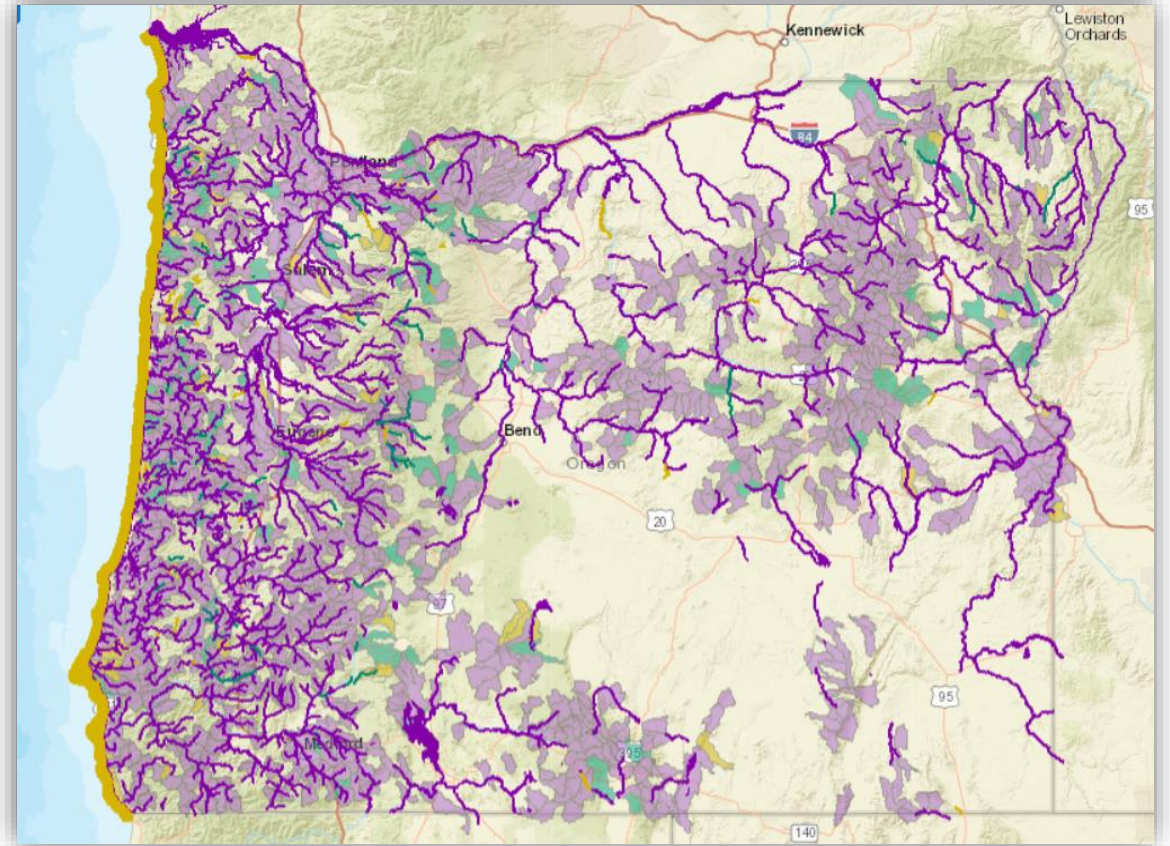
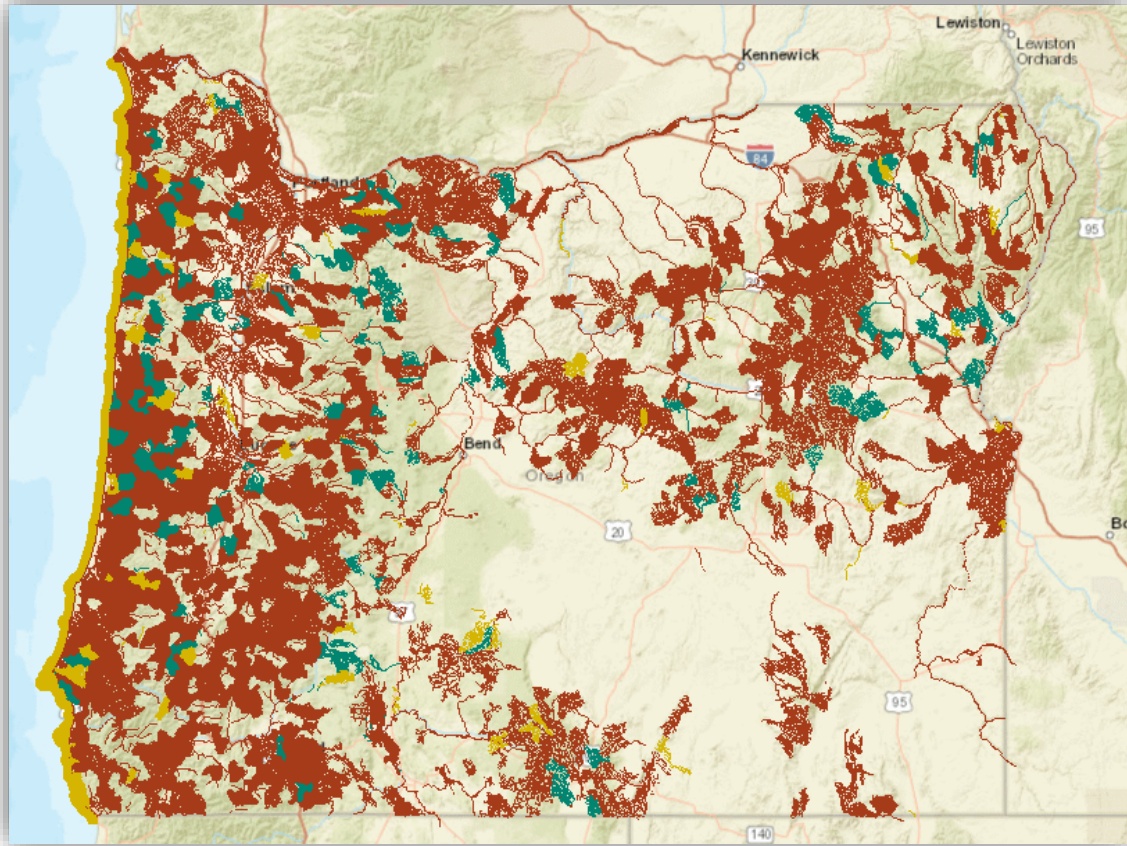
- **What worked**

- Cross walked old impaired waters to new AUs
- Associated stations to AUs prior to assessing data
- River/Stream, waterbody, coastal and marine AUs
- On time ATTAINS submittal
- New interactive display tools

- **What didn't**

- Watershed Assessment Units!
 - Confusion (everyone)
 - Much more data in we expected
 - Inability interpret location of impairment within the unit
 - Government over reach
 - Included managed infrastructure
- New interactive display tools
 - Information overload

Updated Display



The Story Continues - 2022

- Revised methodology to assess watershed assessment units at the station level (not pooled)
- Add symbology for station status to webmap
- One impaired station → Category 5 for the AU
- Display impaired streams within a watershed unit

