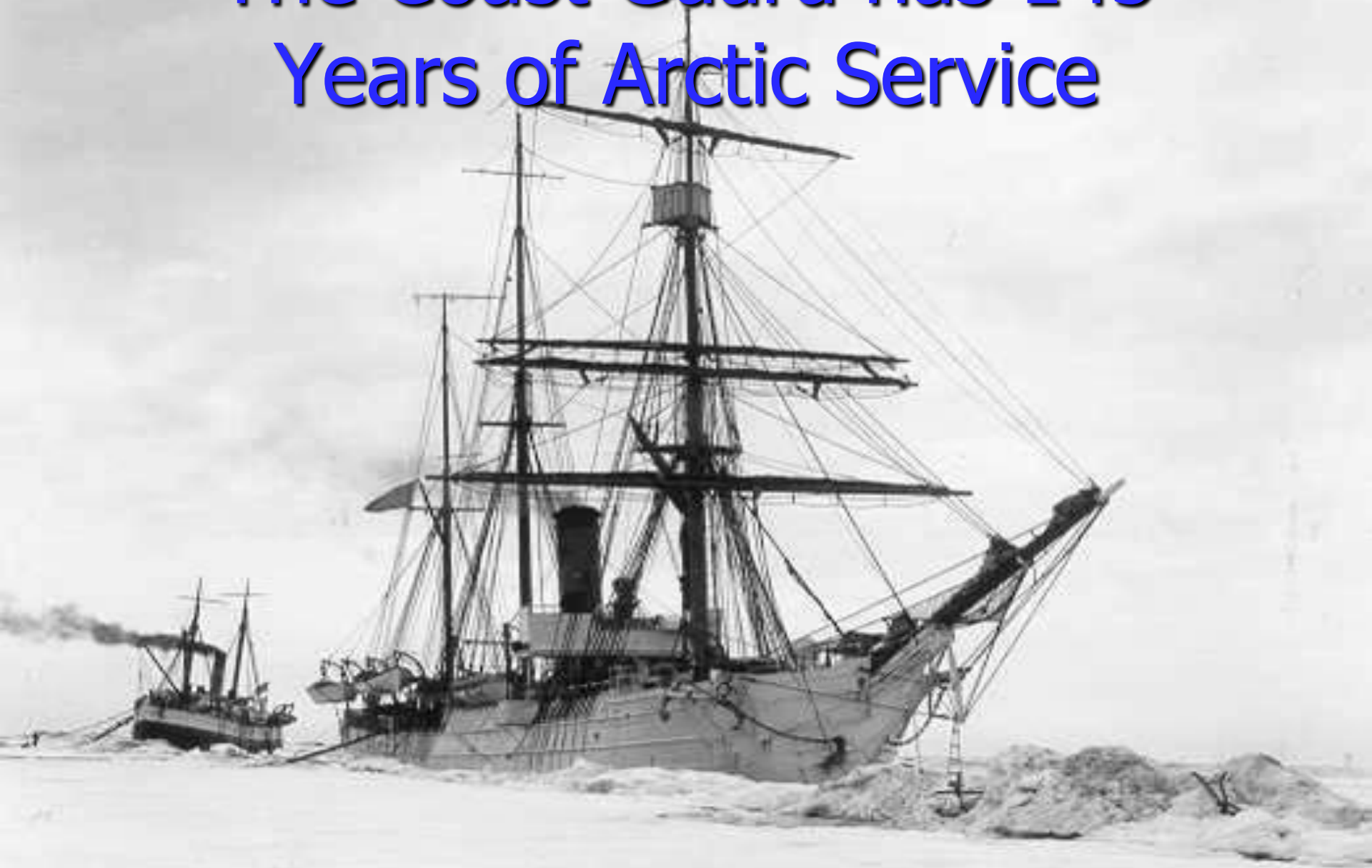


# The Coast Guard has 145 Years of Arctic Service



UNCLASSIFIED

# Operational Challenges



Maritime Boundary Line

Barrow

- Great Distances

Kodiak-Barrow = 825 NM  
Dutch Harbor - Barrow = 1167 NM  
Barrow-North Pole = 1,140 NM

- Severe Weather

- Lack of Infrastructure

- Lack of Knowledge

Attu

St. Paul

Nome

Cordova

Juneau

Kodiak

Dutch Harbor

Cold Bay

Ketchikan

HAVE A SAFE DAY!!!

S/R PUGET SOUND  
OCT 10, 2001  
NORTH BOUND TO  
VALDEZ, ALASKA.  
WIND 88 KNOTS,  
PROP 65 RPM'S,  
HARD LEFT RUDDER  
FOR 7 HOURS.  
SHIP STILL MOVING  
"BACKWARDS".

ALL THE BEST,  
RECON-  
RANDY

- 100 + FEET

- 65 FEET

PICTURE TAKEN  
SECONDS BEFORE  
SMASHING INTO  
PORT SIDE,  
SHATTERING  
2" THICK  
GLASS PORTHOLE  
IN OFFICER'S  
LOUNGE.

# Alaskan Infrastructure



- ✓ *Expansive AOR*
  - ✓ *Single Population Center*
  - ✓ *Limited Road Network*
  - ✓ *Civil Aviation Intensive*
  - ✓ *Major Remote Areas*
  - ✓ *Ltd Commercial Access*
- =
- Difficult, Remote Access*



UNCLASSIFIED

# Northern Alaskan Ports

## Port of Nome



**UNCLASSIFIED**

## Port of Dutch Harbor

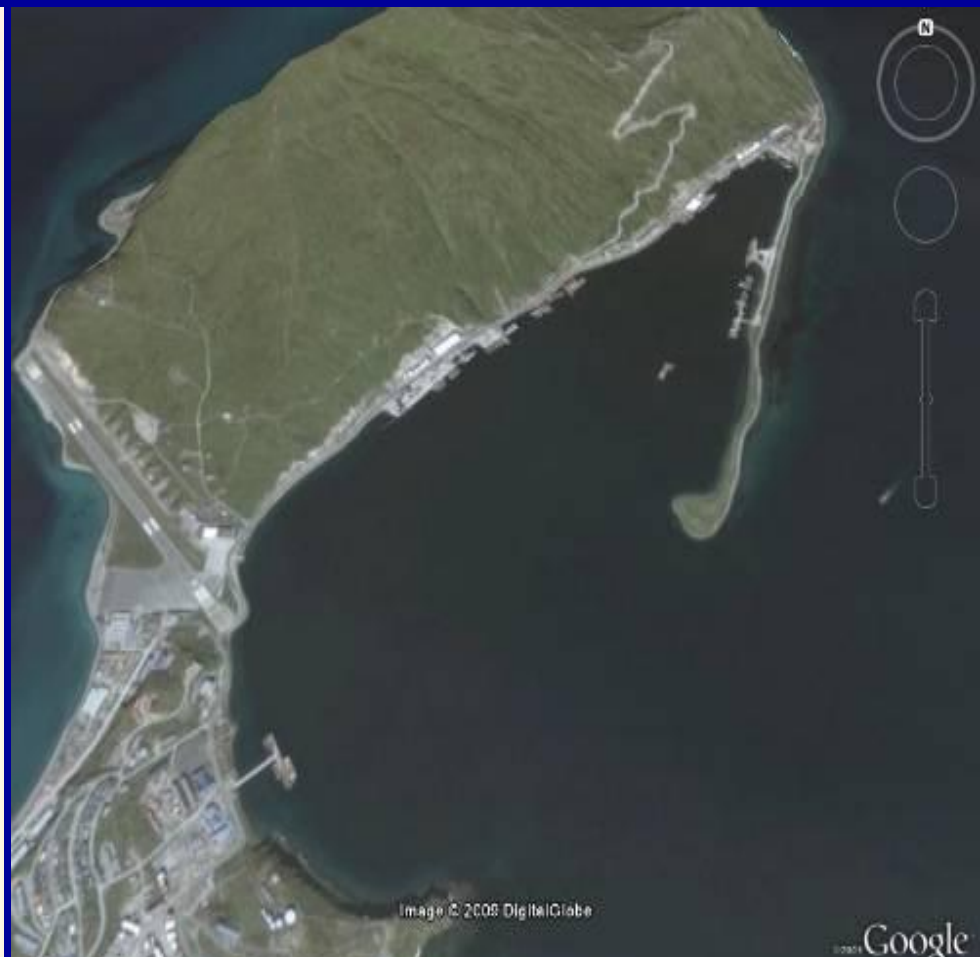


Image © 2005 DigitalGlobe

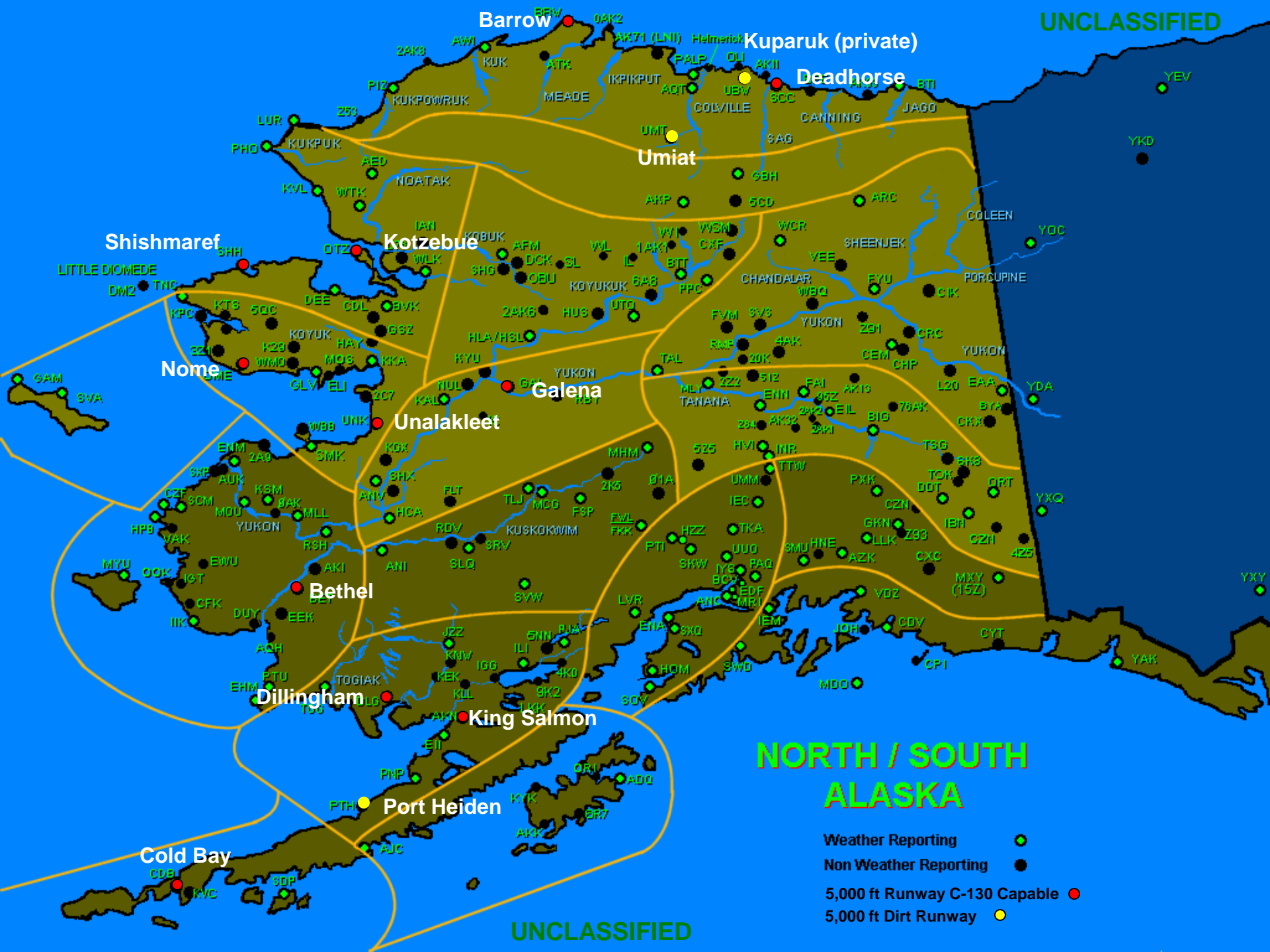
Imagery Date: Sep 13, 2005

53°53'51.84"N 166°31'32.31"W elev 0 ft

Eye alt 6863 ft

Google

UNCLASSIFIED



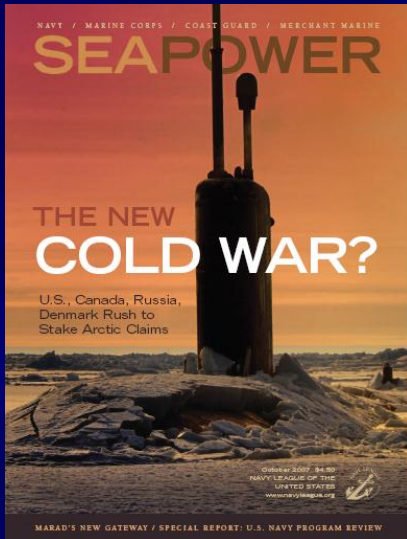
# NORTH / SOUTH ALASKA

- Weather Reporting ●
- Non Weather Reporting ●
- 5,000 ft Runway C-130 Capable ●
- 5,000 ft Dirt Runway ●

UNCLASSIFIED

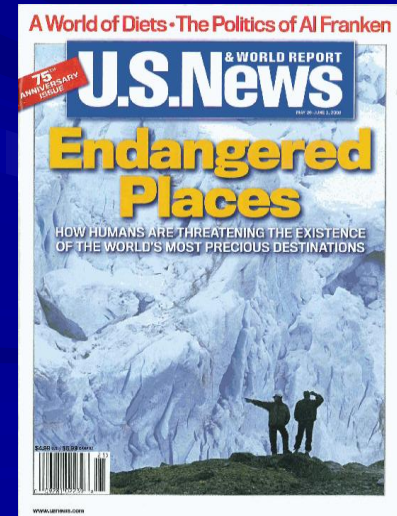
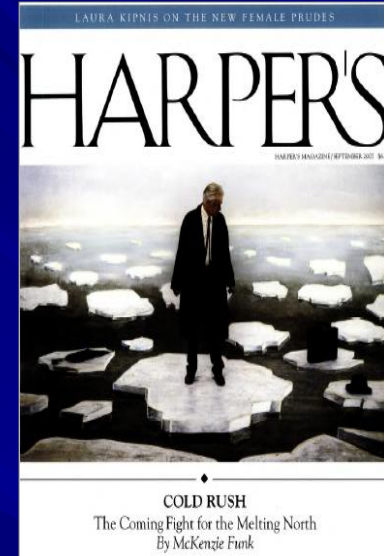


# U.S. Arctic Policy



## NSPD-66 / HSPD-25 (January 2009)

- Meet Nat'l & Homeland Security Needs
- Protect Arctic Environment & Conserve Biological Resources
- Ensure Resource Mgmt & Economic Development Are Environmentally Sustainable
- Strengthen Arctic Nation Cooperation
- Involve Arctic Indigenous Communities
- Enhance Scientific Monitoring & Research



# Freedom of Navigation in the Arctic







# III.F – Maritime Transportation in the Arctic



- **U.S. maritime transportation priorities are:**
  - **Facilitate safe, secure & reliable navigation;**
  - **Protect maritime commerce; and**
  - **Protect the environment**
- **Safe, secure & environmentally sound maritime commerce depends on supporting infrastructure and cooperation; and**
- **U.S. promotes strengthening existing measures and, as necessary, developing new measures to improve the safety & security of maritime transportation, as well as to protect the Arctic environment**



# Coast Guard's Eleven Statutory Missions

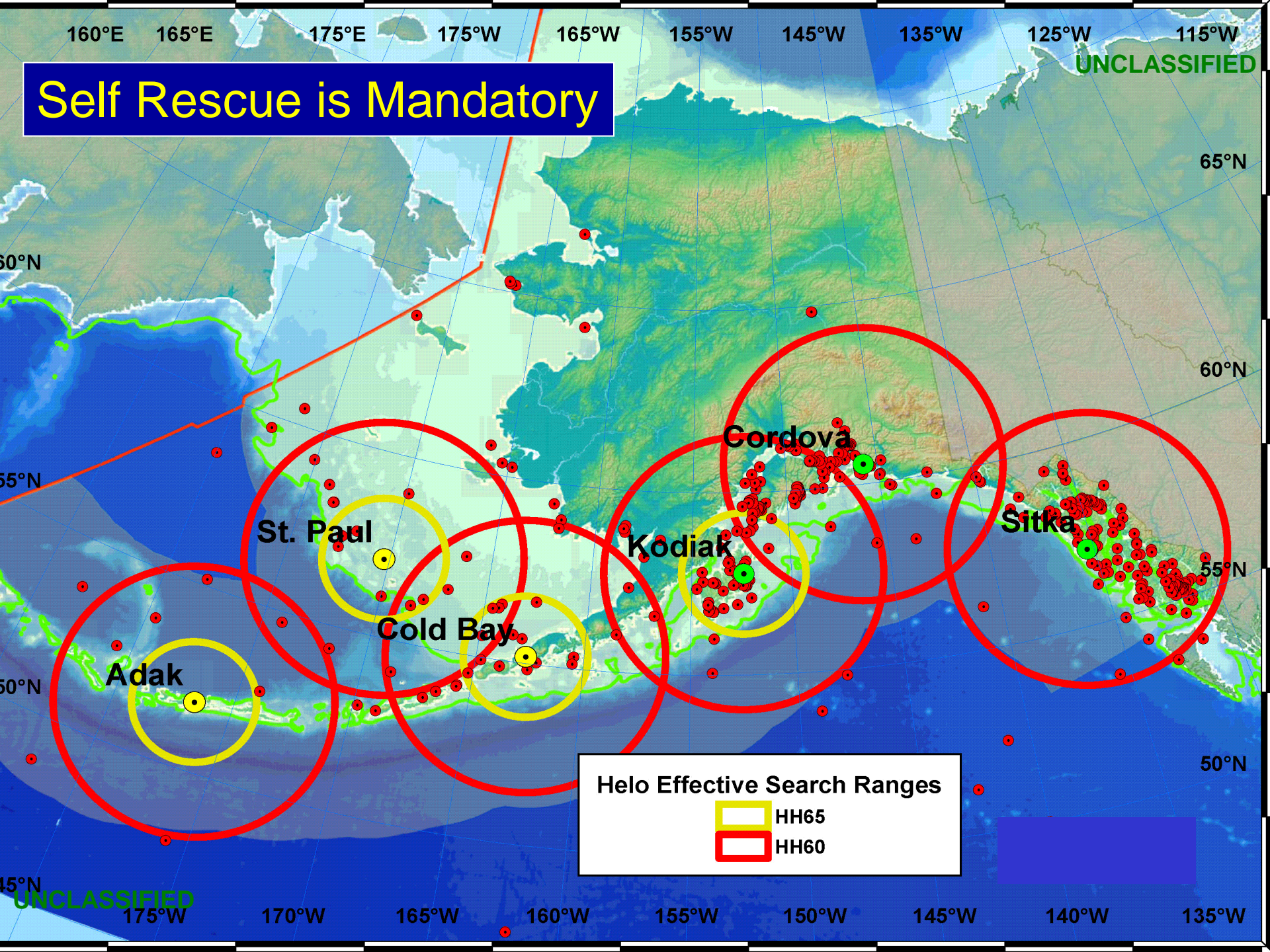
<b>Safety</b> <i>Saving lives &amp; protecting property</i>	<b>Security</b> <i>Establishing &amp; maintaining a secure maritime system while facilitating its use for the national good</i>	<b>Stewardship</b> <i>Managing the sustainable &amp; effective use of its inland, coastal and ocean waters, &amp; resources for the future</i>
Search and Rescue	Illegal Drug Interdiction	Marine Environmental Protection
Marine Safety	Undocumented Migrant Interdiction	Living Marine Resources
Waterways Management	Ports, Waterways & Coastal Security	Ice Operations
	Defense Readiness	Other Law Enforcement

# Protecting People



UNCLASSIFIED

# Self Rescue is Mandatory





# Protecting the Environment



**UNCLASSIFIED**



# Progress Towards Research into Oil-Spill-in-Ice



UNCLASSIFIED



# Coastal Erosion

Loss of protection from Fall storms





# Marine Safety



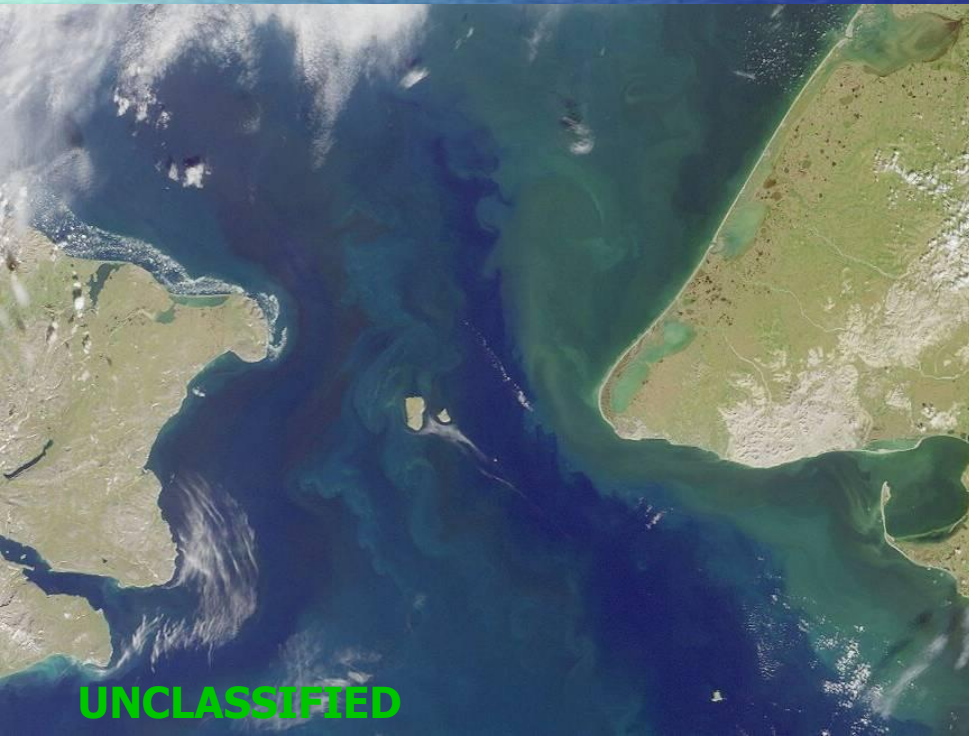
UNCLASSIFIED





# Waterways Management

*To promote safe waterways and an efficient Marine Transportation System vital to the American and global economies; to reduce risks in the maritime domain*



UNCLASSIFIED



# The Way Forward - Regimes



Join the Law of the Sea Convention



Actively engage with the Arctic Council



Promote US Arctic interests through the IMO



Work to Implement NSPD-66/HSPD-25,  
Arctic Region Policy



# Arctic Domain Awareness



UNCLASSIFIED

# Way Forward – Operational Capabilities





# OPERATION ARCTIC CROSSROADS



UNCLASSIFIED//FOUO



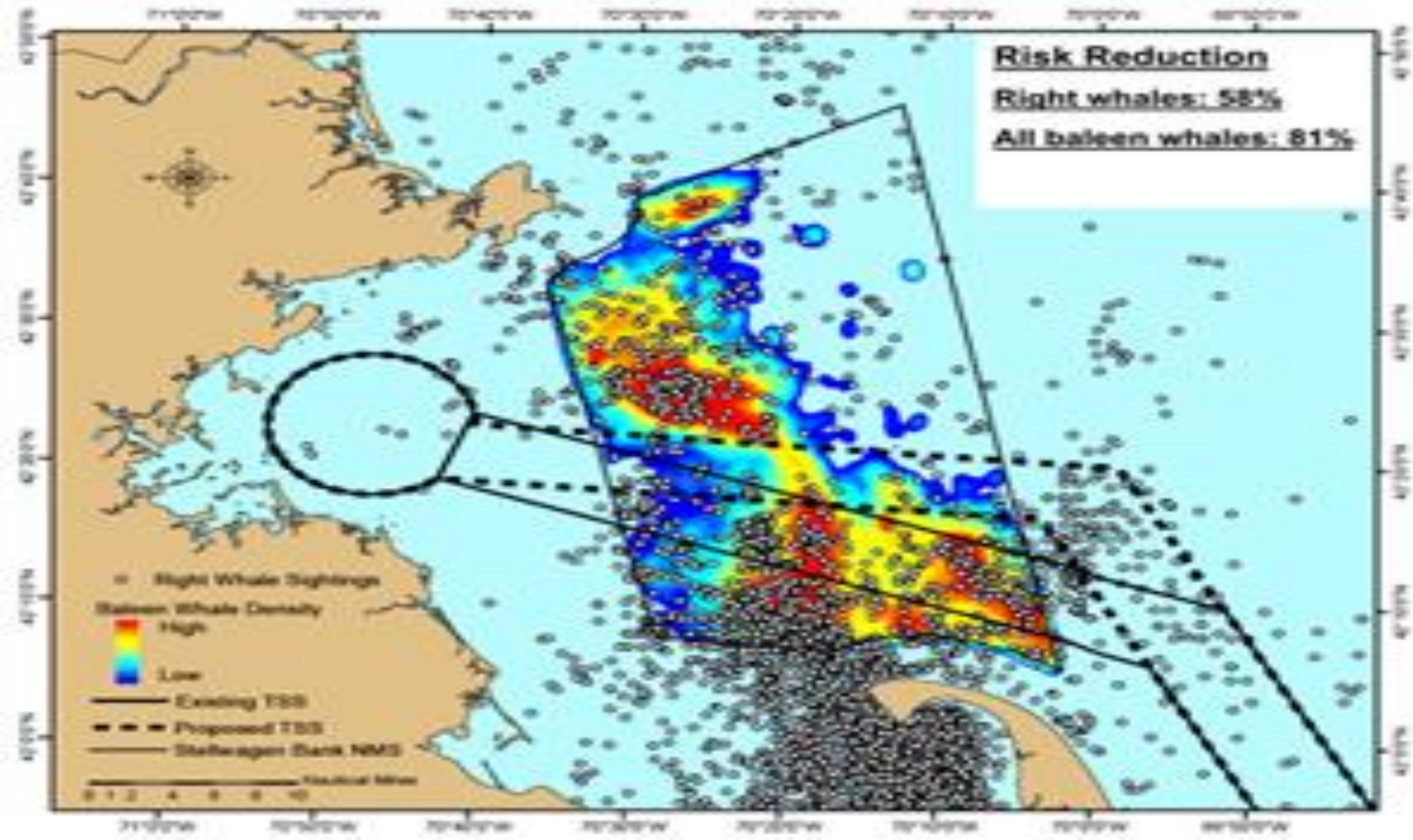
# Questions?





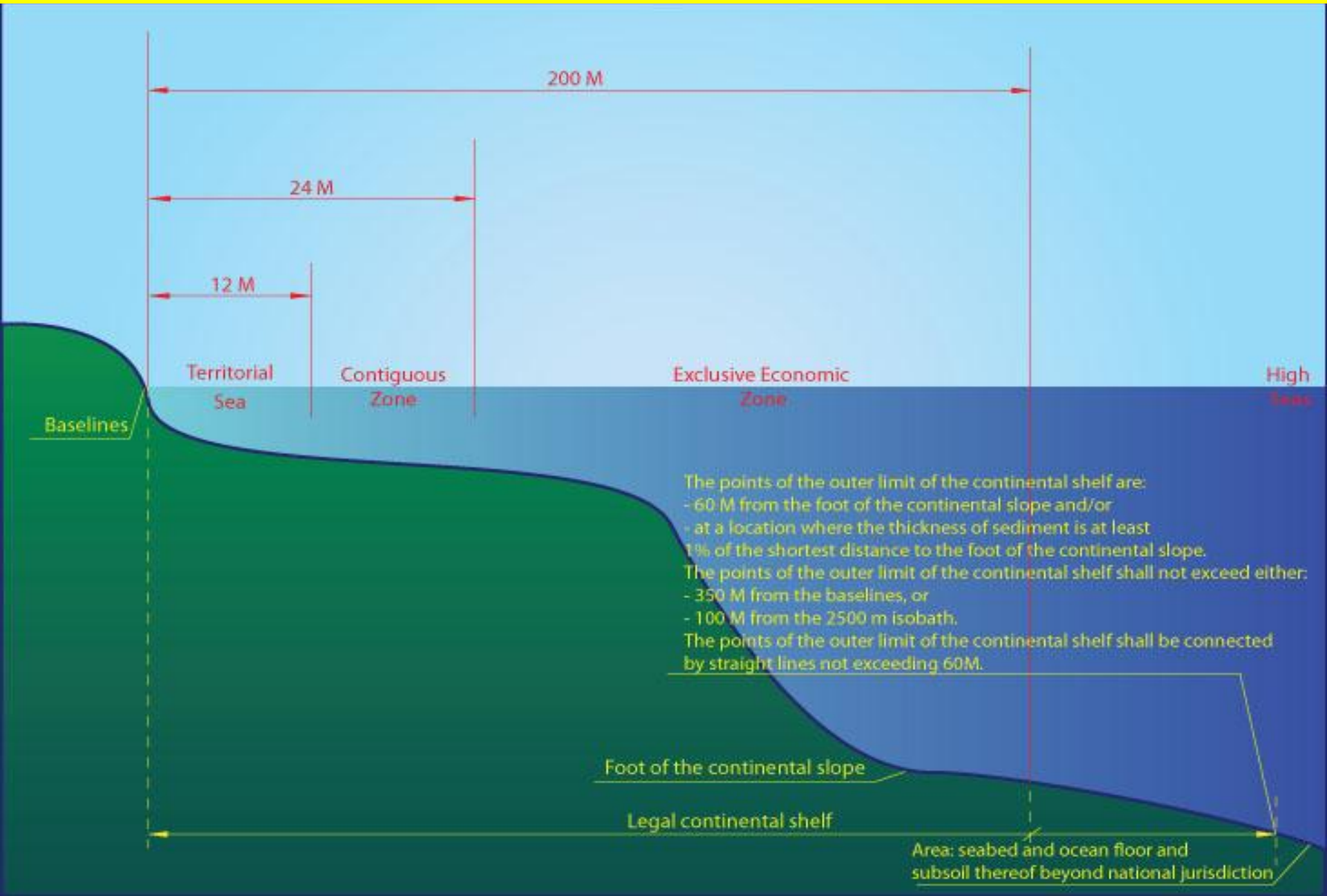
# Backup Slides

# Potential Benefits of CMSP: Stellwagen Bank National Marine Sanctuary





# What is an Extended Continental Shelf?





# Why Is It Important?



UNCLASSIFIED



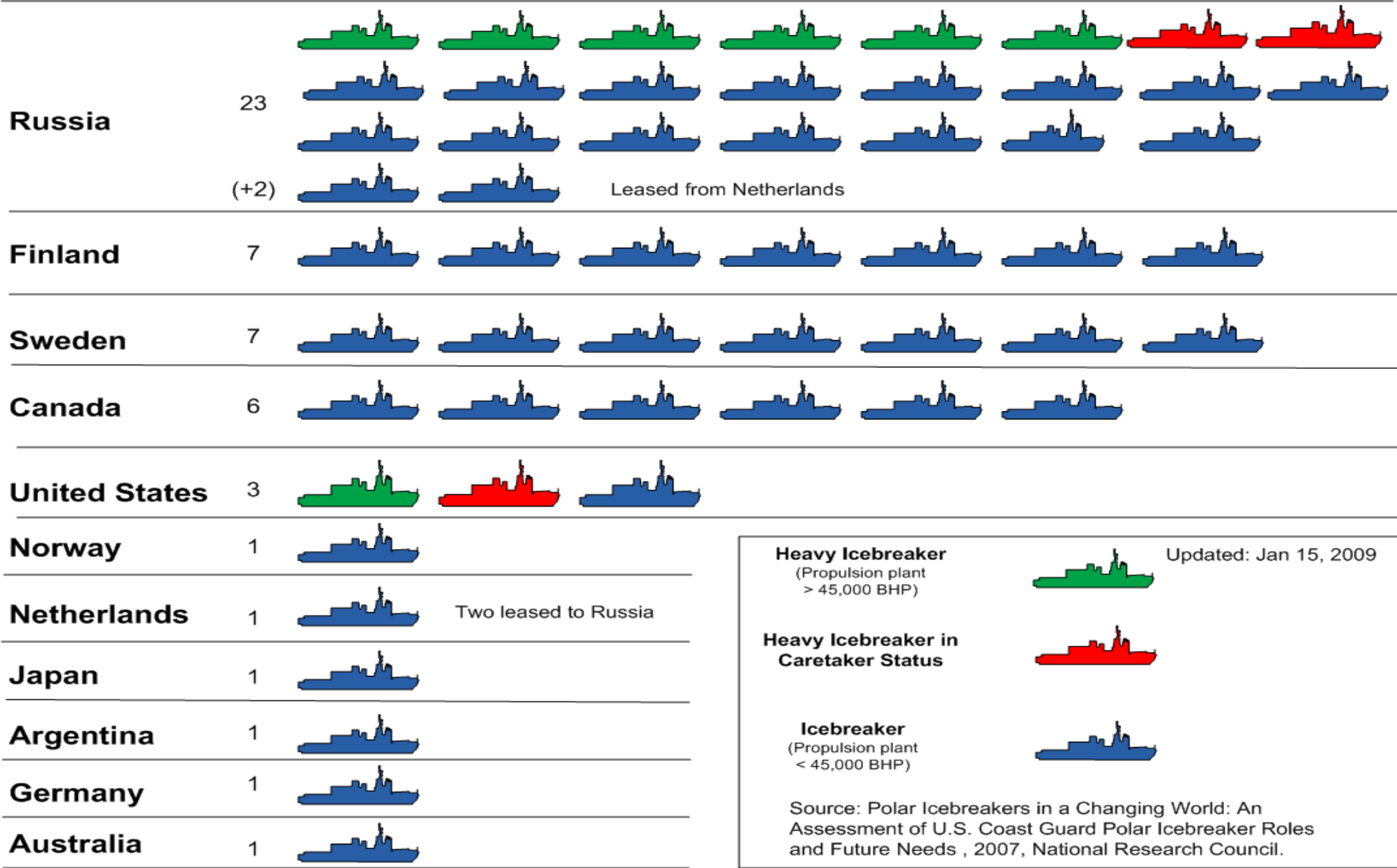
# Ice Operations



**UNCLASSIFIED**




# Icebreaker Capacity

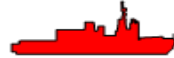


Updated: Jan 15, 2009


**Heavy Icebreaker**  
(Propulsion plant > 45,000 BHP)



**Heavy Icebreaker in Caretaker Status**



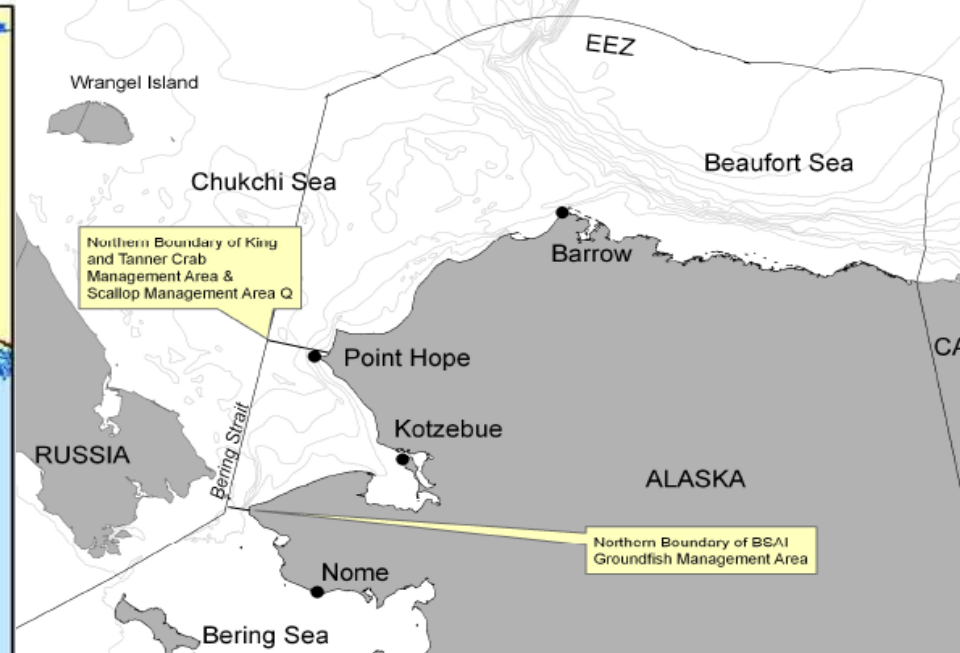
**Icebreaker**  
(Propulsion plant < 45,000 BHP)



Source: Polar Icebreakers in a Changing World: An Assessment of U.S. Coast Guard Polar Icebreaker Roles and Future Needs, 2007, National Research Council.



# Protecting Living Marine Resources



UNCLASSIFIED

# Alaska Native & Tribal Engagement

- AK has 229 of the 562 Federally Recognized Native Tribes
- EO 13175 – Mandates Tribal Consultation
- 13 Native Regional & 200 Village Corporations
- Protection of subsistence lifestyle - AK Eskimo Whaling Commission, Eskimo Walrus Commission, Nanuk Commission





# High Latitude Mission Analysis Report

## Purpose of MAR

- **Defines mission requirements and capabilities**
- **Determines current and future performance gaps**
- **Describes alternative functional capability or process solutions**

## Status

- **Volume I: Polar Ice Operations – June 2010**
  - **Interim Draft delivered May 2009**
  - **Focused on mission requirements for Polar Icebreaking**
    - **Validated current Ice Operations Mission in Arctic and Antarctic and need for icebreaking capability**
  - **Final will update draft to consider future requirements and capabilities**
- **Volume II: Arctic – May 2010**
  - **Focuses on current and future mission requirements for all 11 Statutory CG Missions**
- **Volume III: Antarctic – February 2010**
  - **Focuses on current and future mission requirements for all 11 Statutory CG Missions**