

Massachusetts Department of Environmental Protection

Advanced Monitoring and Remote Sensing Initiatives

J.B. and Maurice C. Shapiro Symposium
Advanced Monitoring, Remote Sensing, and Data
Gathering, Analysis and Disclosure in Compliance and
Enforcement
March 2015



E-Enterprise Mission

Protecting the environment through modern business processes, technology, and partnerships



Today's Discussion: Technology Based E-Enterprise Activity Areas

Advanced Monitoring: Supporting innovations in equipment, tools, and data collection and analysis

Modernize Legal Framework

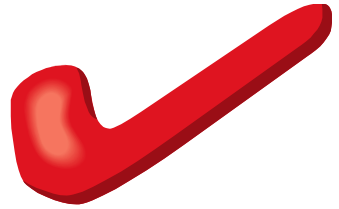


Massachusetts Examples

- Vapor Intrusion Detection
- Wetlands Aerial Monitoring
- Water Monitoring and Citizen Science



Vapor Intrusion Active Exposure Pathway Mitigation Measures



**Operating at
the point of
exposure**

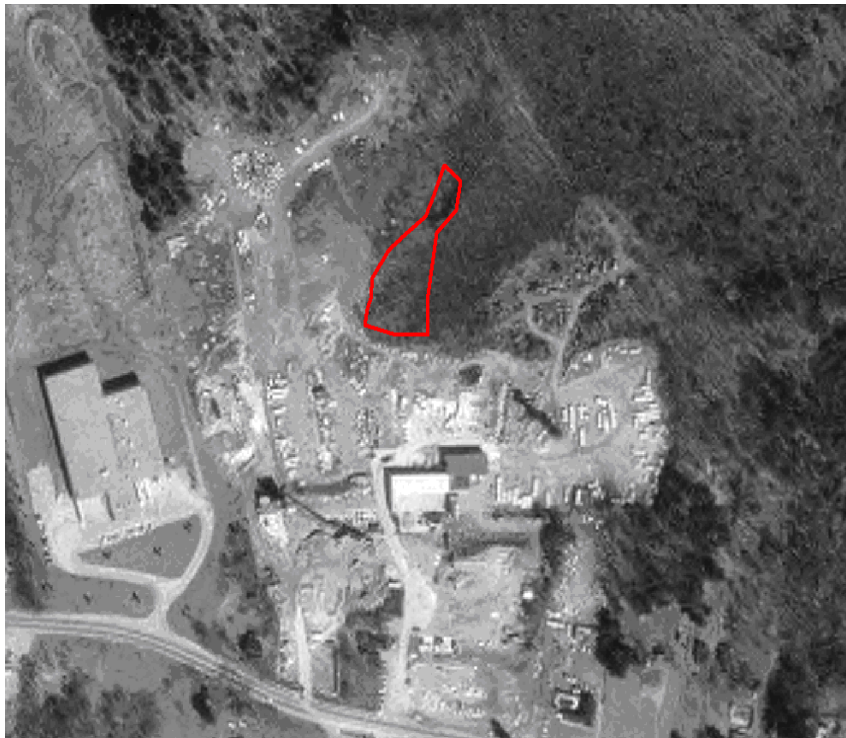


Vapor Intrusion Remote Monitoring Requirements

*“...shall employ remote monitoring technology that will alert the **owner and operator** of the building protected by the Active Exposure Pathway Mitigation Measure **and the Department immediately upon failure** of the system, such as loss of power, mechanical failure or other significant disruption of the effectiveness of the system.”*



Wetland Loss Aerial Monitoring



Water Monitoring Citizen Data

External data categorized into 3 general levels, related to the monitoring objectives

- Educational/Stewardship-level
- Screening level, and
- Regulatory/Assessment level



Contact Information

Victoria Phillips

Director, Enterprise Information Office

MA Dept of Environmental Information

Victoria.phillips@state.ma.us

617-292-5956

