

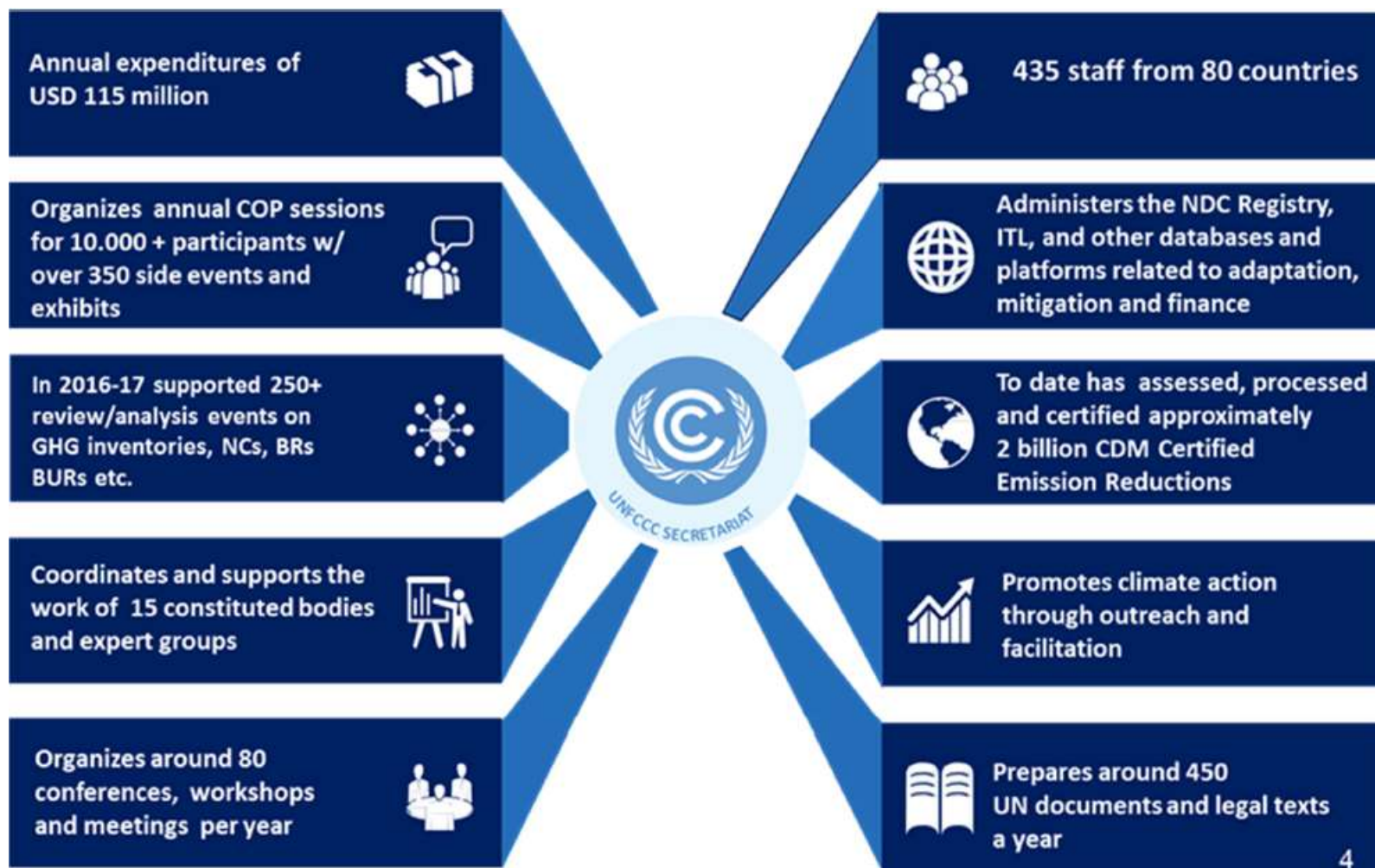
Leading into 2050: Building Resilience for Health, Climate & Biodiversity

Role of the United Nations Framework Convention on Climate
Change

Fatema Rajabali, Adaptation Division, The Nairobi work programme



WHAT DOES THE UNFCCC DO?



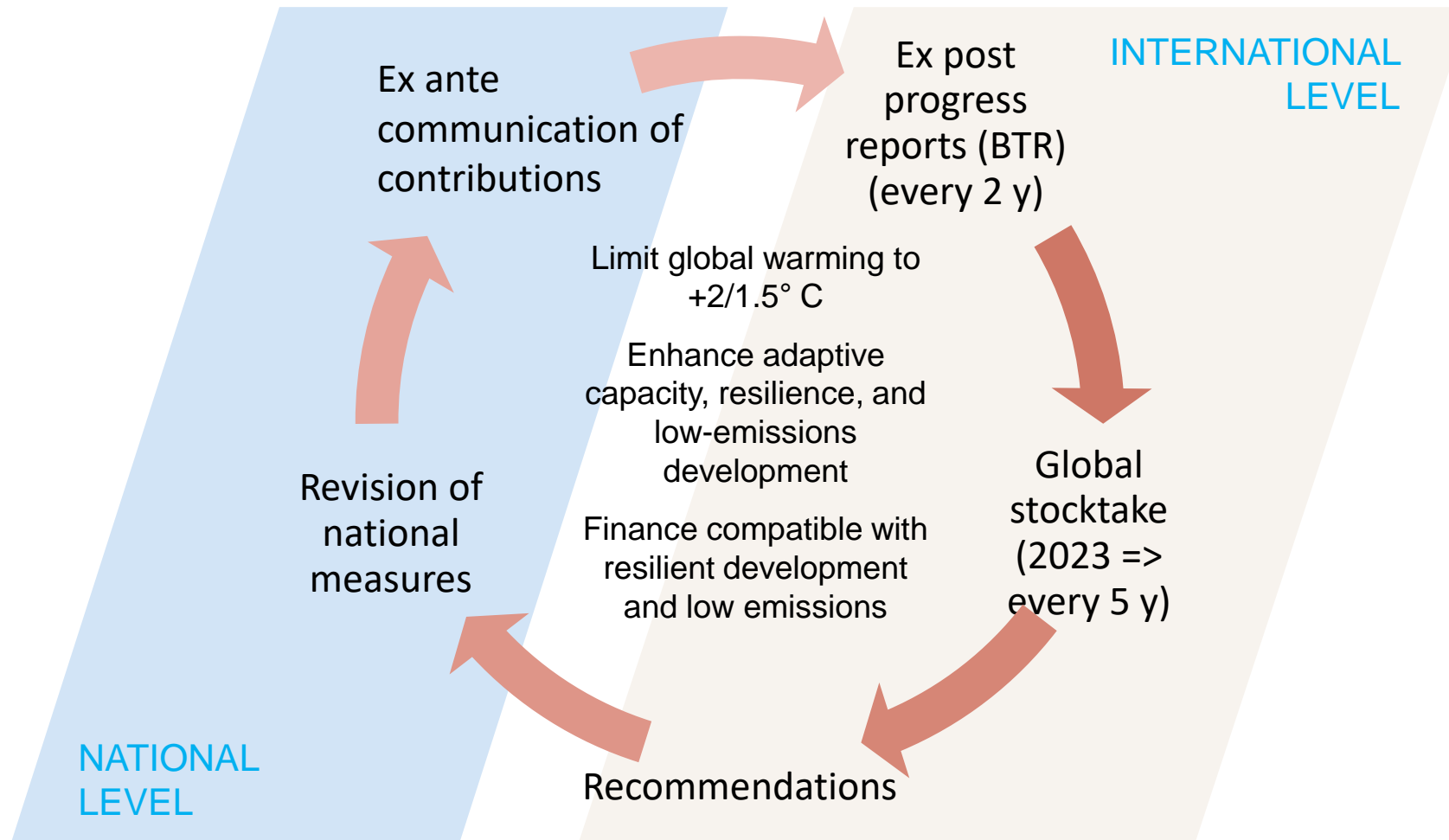
THE PARIS AGREEMENT



Photo credits: Earth Negotiations Bulletin



THE PARIS AGREEMENT CYCLE



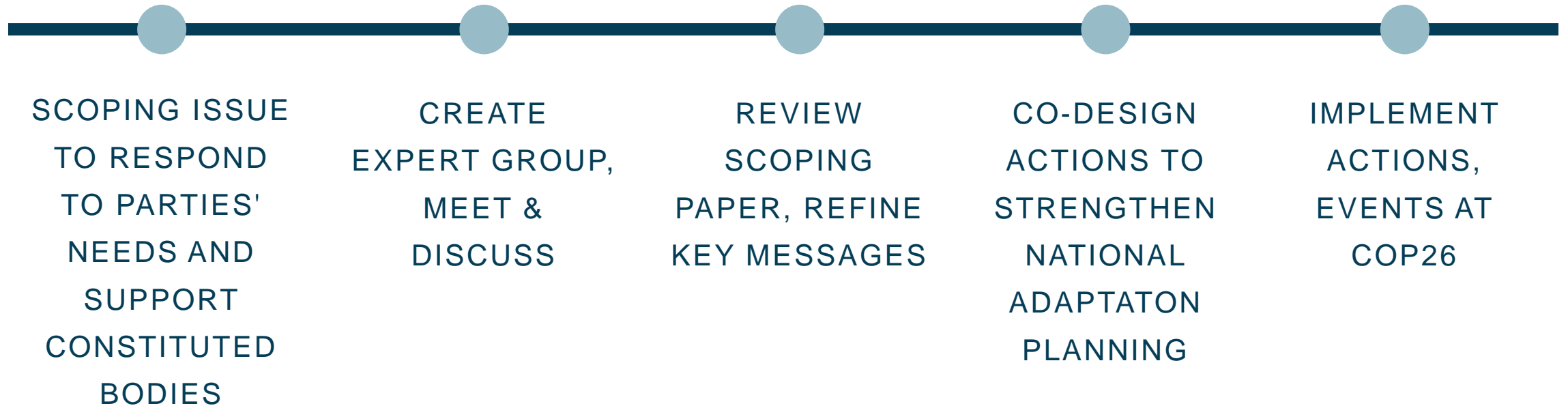
BIODIVERSITY & CLIMATE CHANGE: THE ROLE OF FORESTS AND GRASSLAND ECOSYSTEMS

Closing knowledge gaps to scale up
adaptation action

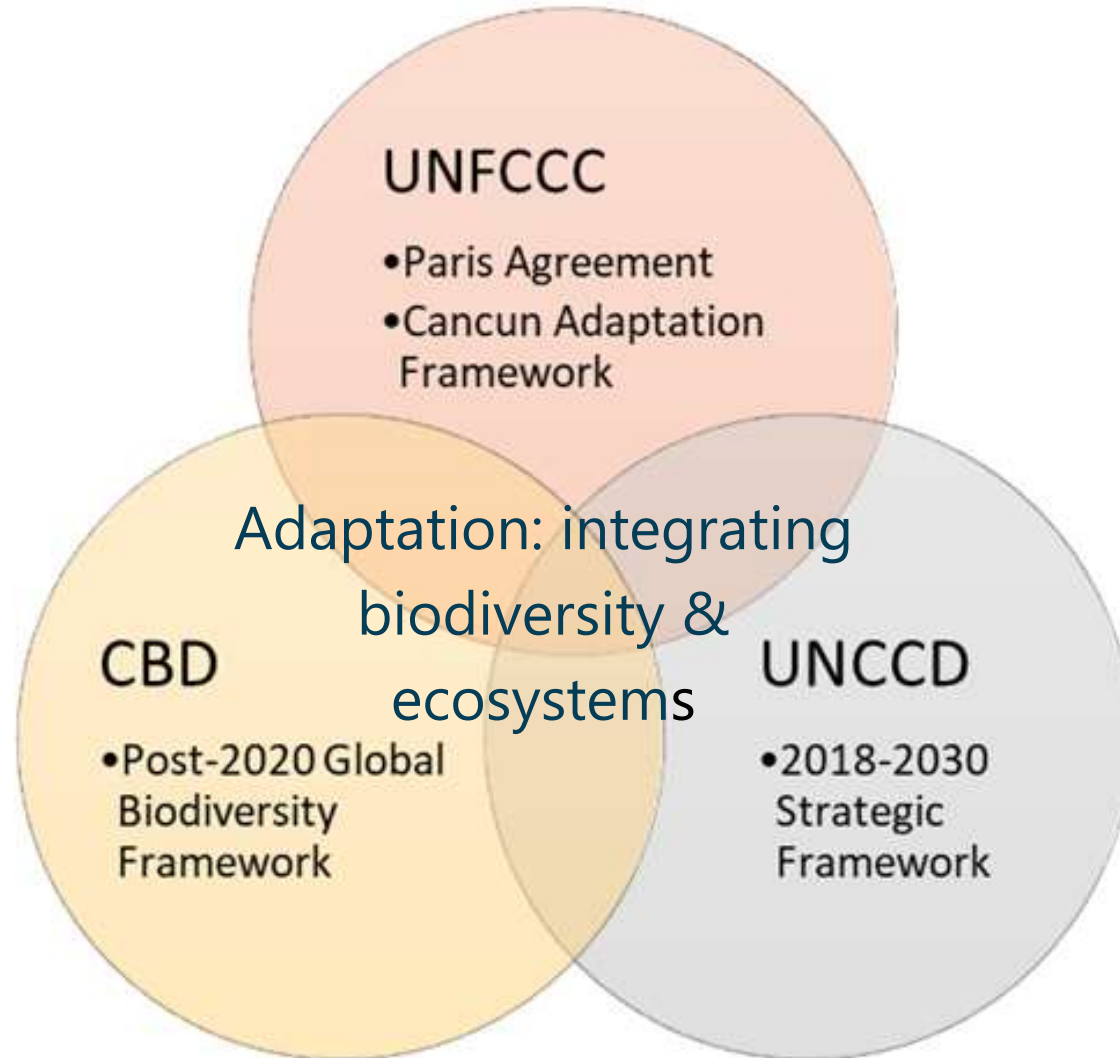


From Knowledge to Action

NAIROBI WORK PROGRAMME



Multiple benefits and synergies for sustainable development



Adaptation Options

HARD / TECHNOLOGICAL

- Seawalls
- Shelters
- Hazard mapping & monitoring technology



SOCIAL / INSTITUTIONAL

- Governance frameworks
- Policy tools
- Early warning systems
- Livelihood diversification
- Financial incentives



HYBRID

- Grey-green infrastructure
- Vegetated buffer zones-seawall
- Constructed wetlands
- Bioswales



EBA/NATURE-BASED

- Landscape conservation & restoration
- Ecological corridors
- Reforestation
- Green infrastructure





NAMAKWA DISTRICT, SOUTH AFRICA

EbA - Rehabilitation of critical
rangeland and wetland ecosystems within
the Succulent Karoo ecoregion



ISIOLO COUNTY, KENYA

Isiolo County Climate Change Fund -
preparing counties to access global
climate financing of adaptation and
climate-resilient development



HINDU KUSH HIMALAYAS

Integrated landscape approach to adapt to
water shortages, flash floods, forest
degradation. Measures included livelihood
diversification and rehabilitation of
rangelands, forests and agro-ecosystems.





BISNUPAR COMMUNITY FOREST, NEPAL

Community forest user group-driven EbA -
expansion of tree cover in forests and
cultivation of beehives to support
biodiversity and income for women



NOR YAUYOS COCHAS, PERU

Combining green and
grey infrastructure to restore water flow to
native grasslands/pastures and
improve livestock and pastureland
management



DAR-ES-SALAAM, TANZANIA

Hybrid/EbA to adapt to sea level rise and
floods - upgrading seawalls, relocating
aquifers, and restoring mangrove forests



Lessons Learned

CASE STUDIES



COMBINING STRATEGIES TO MAXIMIZE EFFECTIVENESS

- Conservation corridors
- Restoration
- Strengthening community organizations
- Regional steering committees
- Value chain development

GENUINE PARTICIPATORY APPROACHES

- Participatory 3D modeling
- Collaborative M&E
- Local economy resilience assessments

SUSTAINABLE FINANCING MODELS

- County level structures and budgets
- Government public works /job creation funds



Lessons Learned

CASE STUDIES



GENDER-RESPONSIVENESS

- Enhancing livelihoods and benefits for women through community forest user groups
- Gender-disaggregated baseline and endline studies with control group

TRADITIONAL KNOWLEDGE

- Support of customary range management institutions
- Selection of native species for restoration

TRANSBOUNDARY PLANNING

- Interdisciplinary research, participatory planning, multistakeholder consultation, regional commitment for conservation & development outcomes, key species for cooperation



Lessons Learned

CASE STUDIES



ENABLING CONDITIONS

Empower formal and customary governance structures and platforms to promote learning and capacity building

SUPPORTING POLICIES

Recognizing indigenous land rights and protect traditional knowledge and protect and manage forests and watersheds

COMMUNICATIONS SUPPORT

Engaging government departments, NGOs, private sectors and the media
Field demonstration





Join us

NWP PARTNERSHIP

LEARN MORE

http://bit.ly/UN_NWP
nwp@unfccc.int

JOIN A COMMUNITY OF PRACTICE

Friends of EbA

