

GREEN NEW DEAL PLAN

Kathryn (Katie) Goldman
Climate Policy Advisor, Mayor's Office of Sustainability,
City of Los Angeles

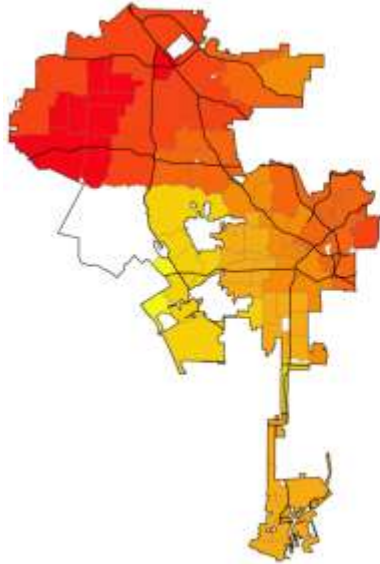




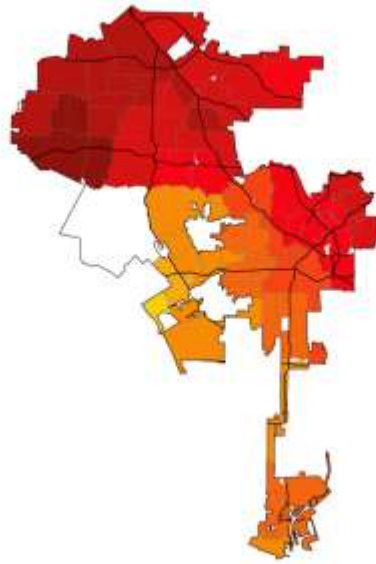
L.A. is Projected to Get Hotter

Average Hottest Day of the Year (by NCD)

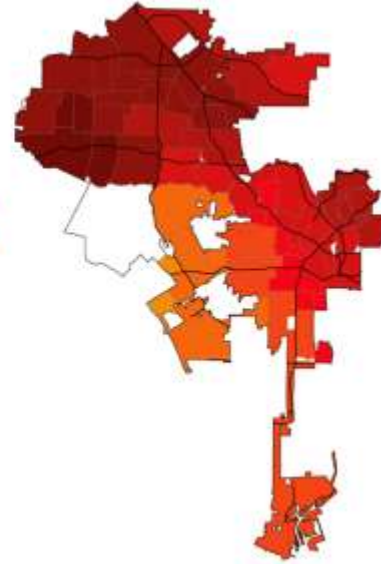
Historic (1976-2005)



RCP4.5 (End of Century:
2070-2100)



RCP8.5 (End of Century:
2070-2100)



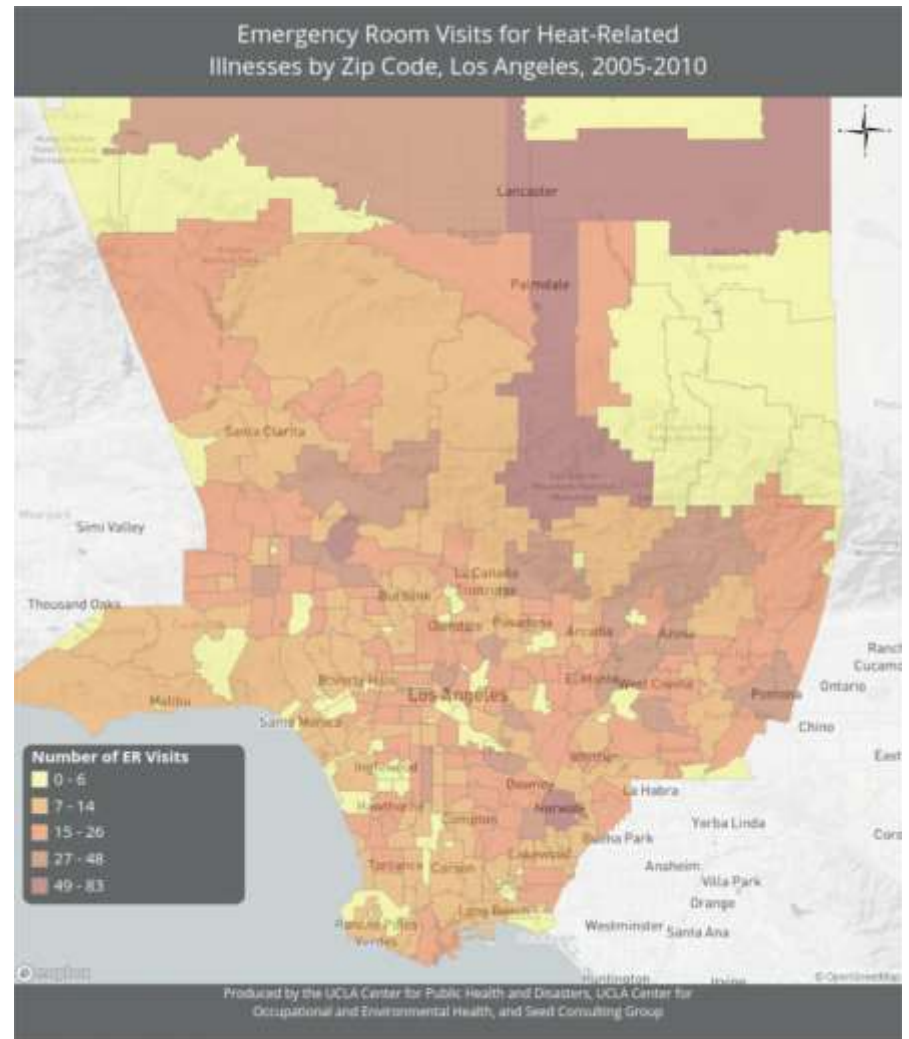
Legend:

Temperature (F)

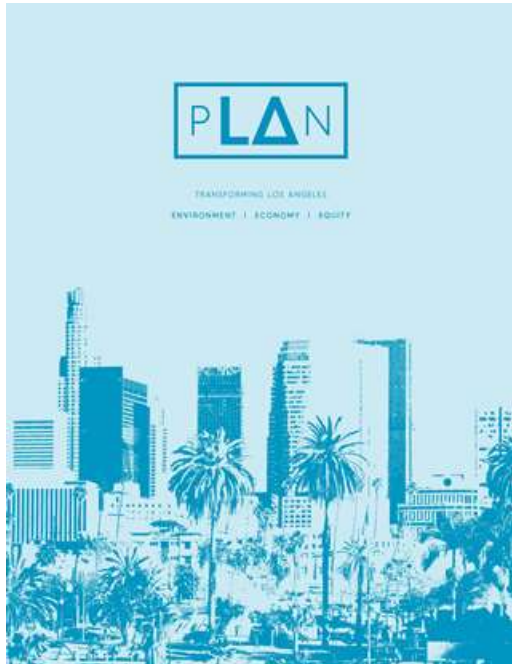


Impacts of Extreme Heat

- L.A. experiences heat-related illnesses and deaths
- One of the only cities with heat related deaths in Winter
- Vulnerable groups: youth, elderly, medical conditions



L.A. is Planning for Extreme Heat





Strong and Connected Neighborhoods

Resilient L.A. Goal 6

Prepare and protect those most vulnerable to increasing extreme heat.



Target

↓
1° by 2025
3° by 2028

Reduce urban/rural temperature differential by at least 1.7 degrees by 2025; and 3 degrees by 2035

Baseline: 5.58°F * in 2012

Source: Yale-NUIST Center on Atmospheric Environment, using NASA MODIS data

*Annual-mean daytime



Target



Increase tree canopy in areas of greatest need by at least 50% by 2028 to grow a more equitable urban forest that provides cooling, public health, habitat, energy savings, and other benefits

Baseline: Average across City is 20%; to be updated upon completion of citywide tree inventory

Source: MacPherson, 2008

Cooling Strategies



Trees



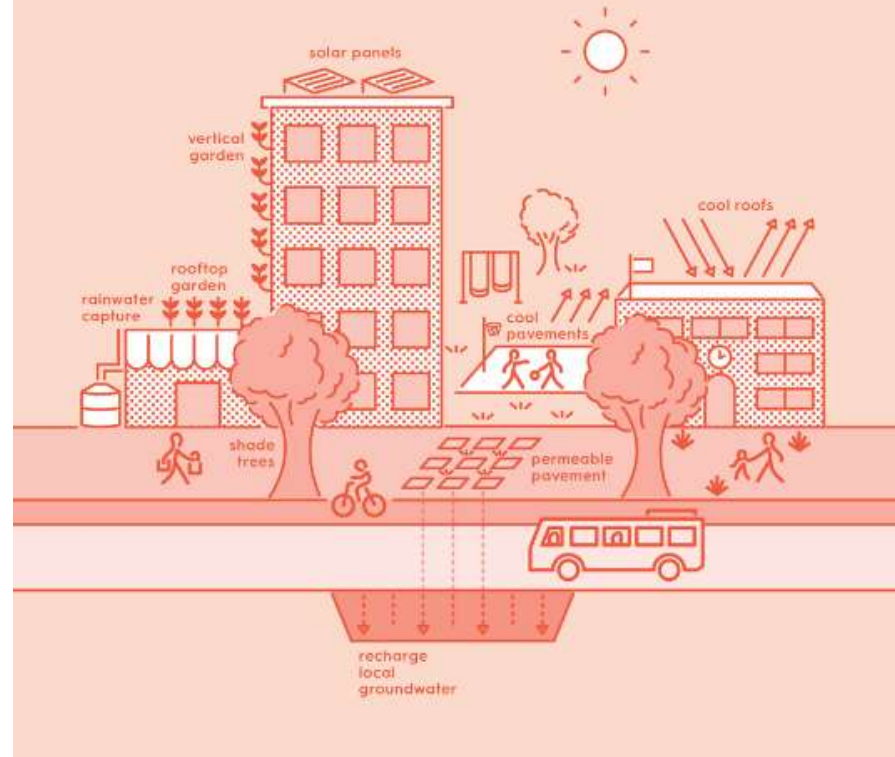
Cool Roofs



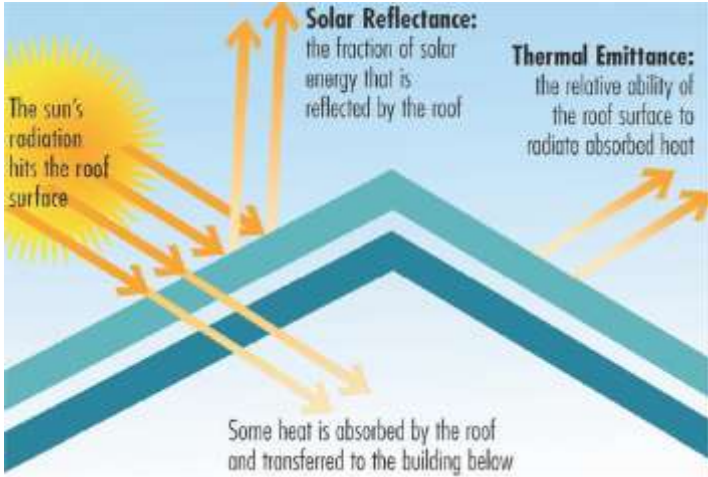
Cool Pavement

PREPARE FOR RISING TEMPERATURES

Light-colored cool roofs and pavement, shade trees, and evaporative cooling from plants and vegetation all help reduce the urban heat island effect



Cool Roof Requirements & Rebates



Ceramic tiles



Coal-colored clay tiles



White roofing

Cool Pavement - Pilot testing (2015)

In July 2015, BSS partnered with Rec & Parks and GSD to Install a Test Patch of Cool Pavement Coating at Balboa Sports Complex



Two Coats of Guard Top
Cool Seal are applied



Finished Product with striping

Obtained Funding to install on Public Streets One city block in each of the 15 Council Districts



Results of Pilot Project Phase 1:



It's very hot on Coronado St in CD13- but the Cool Seal treated pavement is more than 10 degrees F cooler than black asphalt

@MitchOFarrell



3:06 PM - 29 Aug 2017

1. Thermal performance is as expected: 10 deg cooler
2. Residents greeting the installation with excitement
3. Press coverage from LA Times, NY Times, Washington Post, NPR, local TV stations
4. Inquiries from other cities
5. Potential concerns about staining / darkening – updated formulation to be tested Summer 2018

Cool Pavement Program

- Colorful cool coating on protected bike lanes
- Neighborhood level cool pavement projects
- Research human health and comfort effects
- Integrated multi-benefit projects
 - (cool pavement + green bike lane + shade trees + bioswale + bus shelters + hydration stations)

Urban Tree Canopy



Image Source: <http://actreesnews.org/wp-content/uploads/2017/04/Urban-forestry-los-angeles-tree-people.jpg>

LA's Urban Forestry Leadership

Policies to ensure an equitable, healthy, and thriving urban forest

- Equitable Canopy Cover
 - Policy to ensure all trees associated with development projects or replacement requirements are planted
 - Goals to reach an equitable canopy cover by 2028
- Pests and Climate Change
 - Testing out new tree species and updating species planting lists to increase tree species are resilient to pests and climate change
 - Hosted workshops with leading experts in pest research
- Maintain Existing Canopy
 - Policies to adjust sidewalk infrastructure in order to accommodate large, mature trees (tree well widening, sidewalk meandering, sidewalk narrowing)

Canoga Park/ Sherman Way Station Cooling Project

- Disadvantaged Community
- High heat vulnerability
- High pedestrian traffic area
- Community-driven process
- Addresses last-mile
- Cool Pavement + Cool Roofs + Shade
Trees = Cool Neighborhood!



For more information:

- plan.lamayor.org
- lamayor.org/resilience
- cityplants.org
- ladwp.com/rebatesandprograms
- Twitter @BSSLosAngeles
- facebook.com/BSSLosAngeles
- Los Angeles Urban Cooling Collaborative:
treepeople.org/urbancooling
climateresolve.org/our-work/keeping-la-cool

