

Climate, Health and Equity

Surili Sutaria Patel

Tuesday, September 17, 2019

 @SuriliSutaria

 @ClimateHealthEquity



CLIMATE AND HEALTH

GHG Emissions Impact our Health

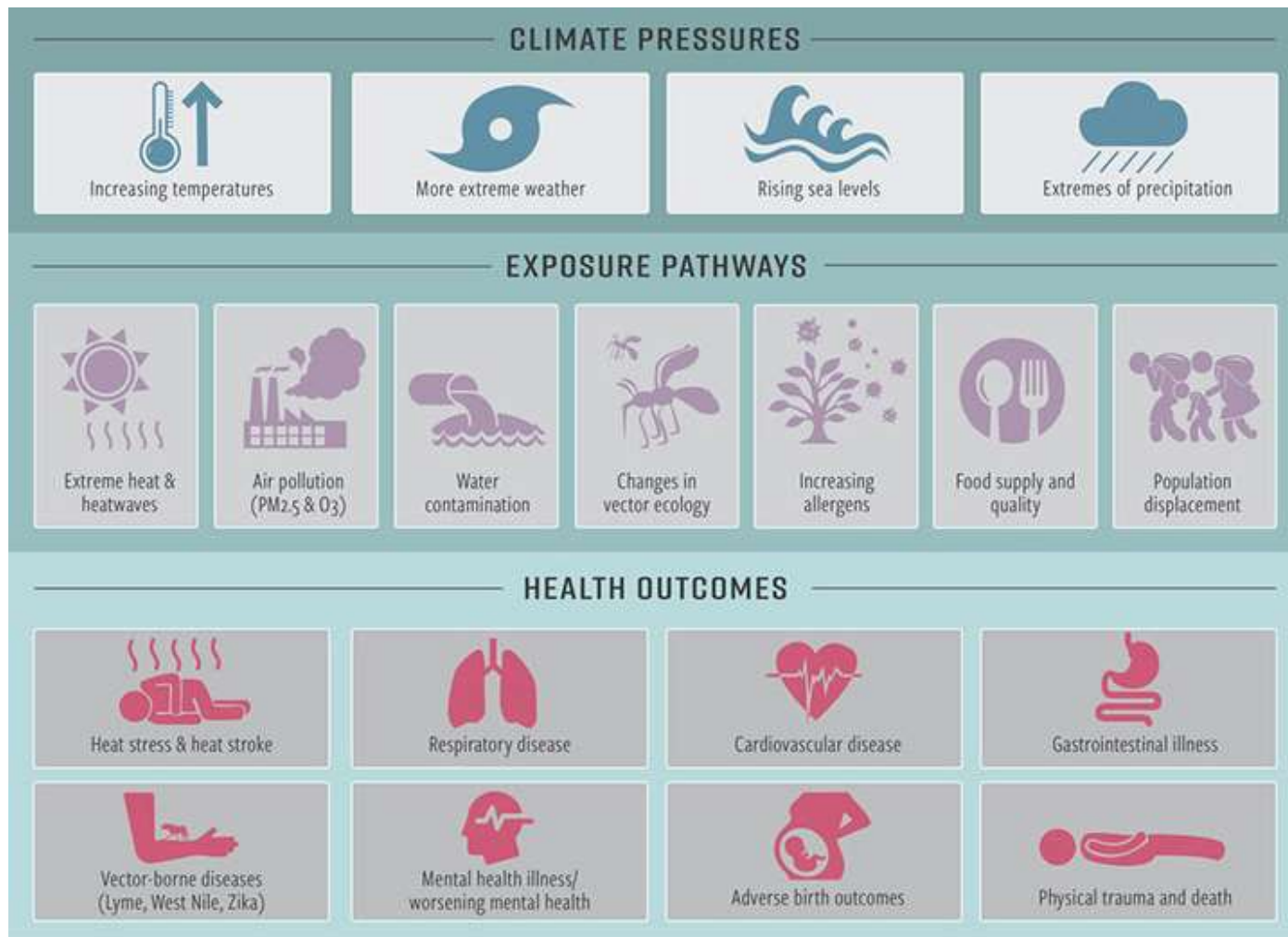


Image from the 2018 Lancet Countdown on Health and Climate Change Brief for the United States of America

The Moral Challenge

Climate change poses “unacceptably high and potentially catastrophic risk”¹ to human health

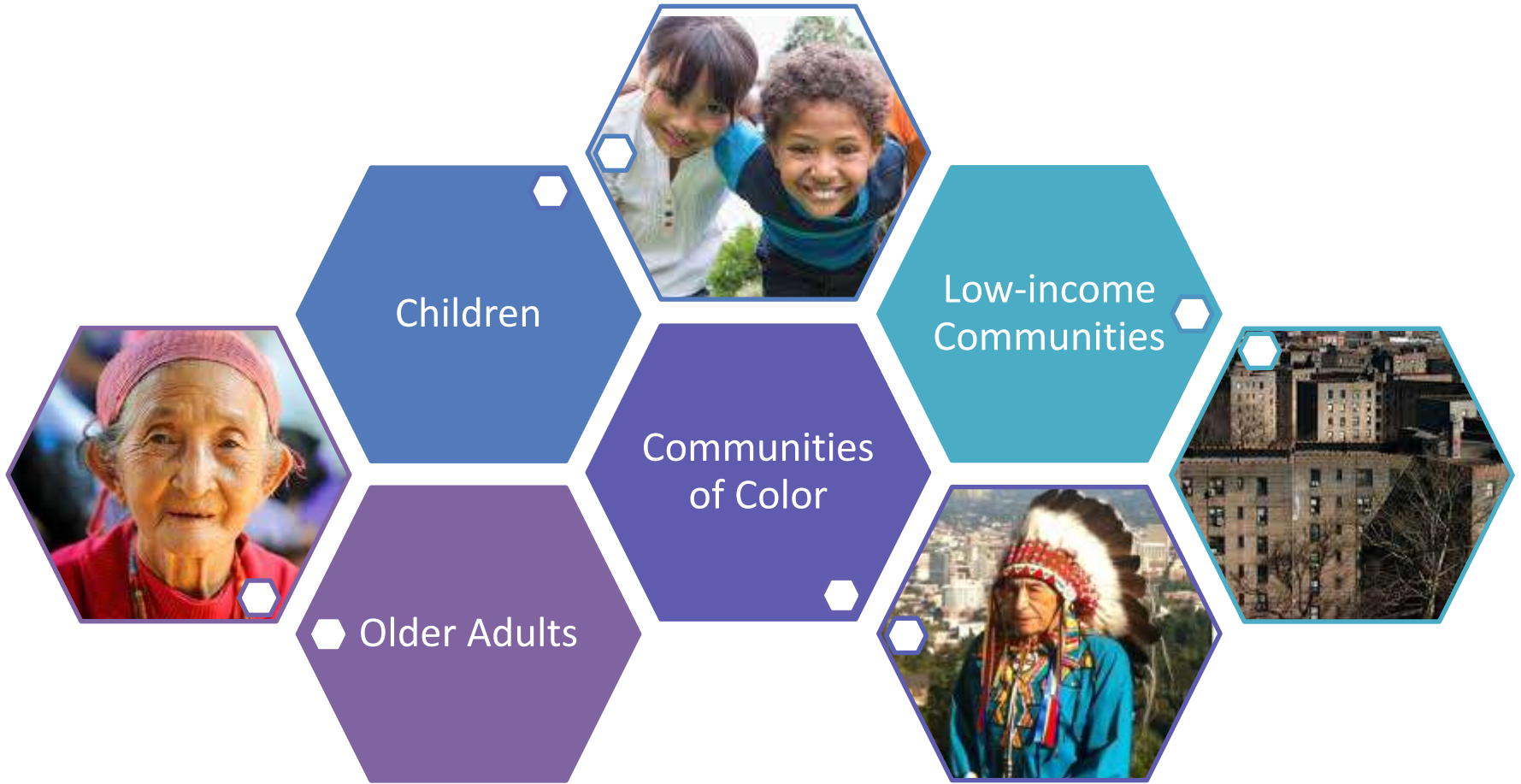
- Heat waves and related mortalities
- Changing patterns of disease transmission
- Threats to food security
- Water contamination
- Rising seas and flooding, and resulting damage to health infrastructures

These challenges exacerbate health inequities that communities of color and low-income people already face

¹ N. Watts et al., “Health and Climate Change: Policy Responses to Protect Public Health,” *Lancet* 386, no. 10006 (2015): 1861–1914.

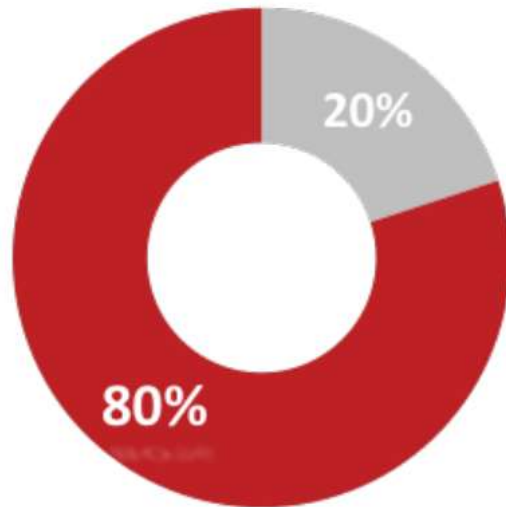
CLIMATE, HEALTH & EQUITY

The Faces of Inequity



CLIMATE, HEALTH & EQUITY

Health Equity 101



■ Clinical Care ■ Non-Clinical Determinants

What Drives Health? ²

- Health is more than Health Care
- Health inequities are neither natural nor inevitable
- Your zip-code may be more important than your genetic code for health
- The choices we make are shaped by the choices we have before us
- Structural racism acts as a force in the distribution of opportunities to health
- All policy is health policy

²Health Equity Report for the District of Columbia 2018

CLIMATE, HEALTH & EQUITY

Human and Civil Rights Framework

Human Rights

- Right to Self Determination
- Right to Safe and Healthy Work Conditions
- Right to Highest Standard of Physical and Mental Health
- Right to Food
- Right to a Decent Living Condition
- Equal Rights Between Men and Women
- Right of Youth and Children to be Free From Exploitation

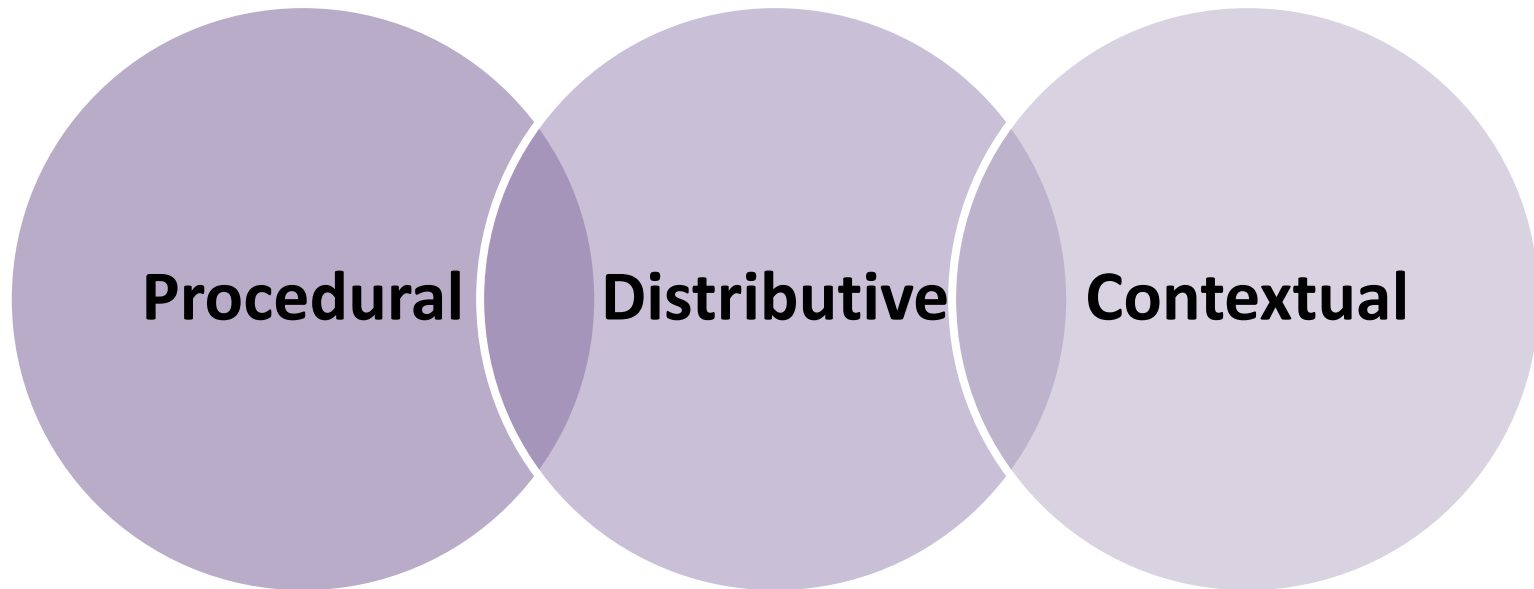
Civil Rights

- Ensuring peoples' physical integrity and safety.
- Protection from discrimination on grounds such as gender, religion, race, sexual orientation, national origin, age, immigrant status, etc.
- Equal access to health care, education, culture, etc.

Adapted from presentation by Jacqui Patterson Director, NAACP Environmental and Climate Justice Program on February 27, 2017

CLIMATE, HEALTH & EQUITY

An Equity Framework



CDC'S CLIMATE AND HEALTH PROGRAM

Building Resilience Against Climate Effects

1



Anticipate
Climate Impacts
and Assess
Vulnerabilities

2



Project the
Disease Burden

3



Assess Public
Health Interventions

4



Develop and
Implement a
Climate and Health
Adaptation Plan

5



Evaluate Impact
and Improve
Quality of Activities

EXTREME HEAT

Cooling the Community

Increase the tree canopy to help keep buildings and the surrounding air cooler



EXTREME HEAT

Cooling the Community

Create cool paving and roofs by using reflective and porous materials to help lower the surrounding temperature



EXTREME HEAT

Cooling the Community

Develop or expand the extreme heat alert system that ensures vulnerable populations can be reached.

Plan cooling centers ahead of time



ADAPTING TO THE NEW NORMAL

Minnesota



OUR SOLUTION

Extreme Heat Toolkit to guide local health officials in responding to heat events



UNIQUE OFFERING

Use **GIS mapping** to identify vulnerable communities and neighborhoods



LASTING IMPACT

Resources allocated to most vulnerable areas. Participating communities grew from **two to six** in just one year



ADAPTING TO THE NEW NORMAL

San Francisco



OUR SOLUTION

The city's first **heat vulnerability index** to pinpoint most susceptible neighborhoods



UNIQUE OFFERING

Index analyzed surface temperature data alongside **21 social and environmental vulnerabilities**



LASTING IMPACT

Index now informs city planning decisions, education efforts, and designated cooling centers



“Do we settle for the world as it is, or do we work for the world as it should be?”

—President Barack Obama



Thank You

Surili Sutaria Patel

Center for Climate, Health and Equity
Center for Public Health Policy

apha.org/climate

