



Hannah Stutzman  
Amazon Conservation Association





Photo: Enrique Ortiz

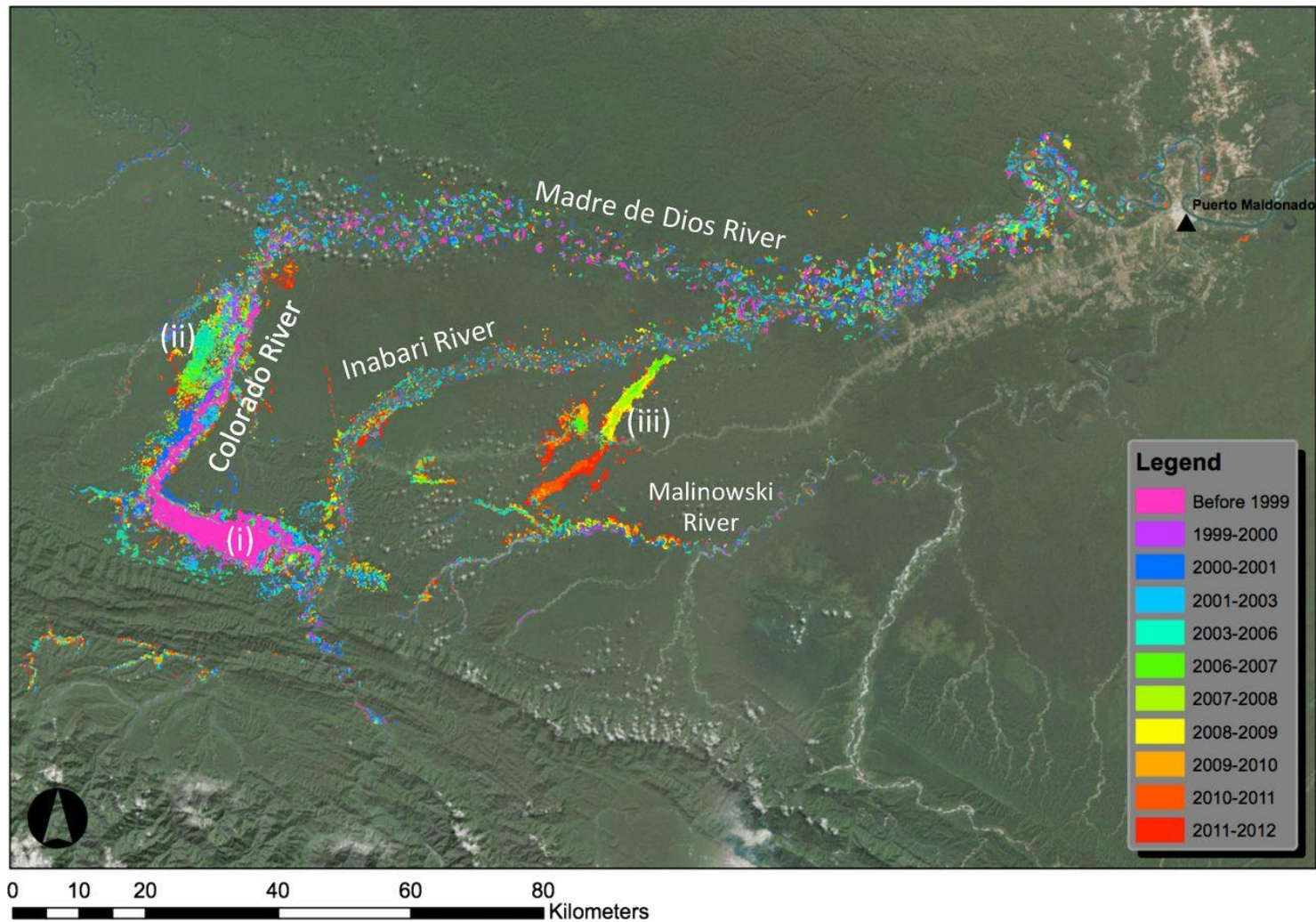
# Illegal ASGM site in Tambopata National Reserve Buffer Zone



La Pampa area - MDD

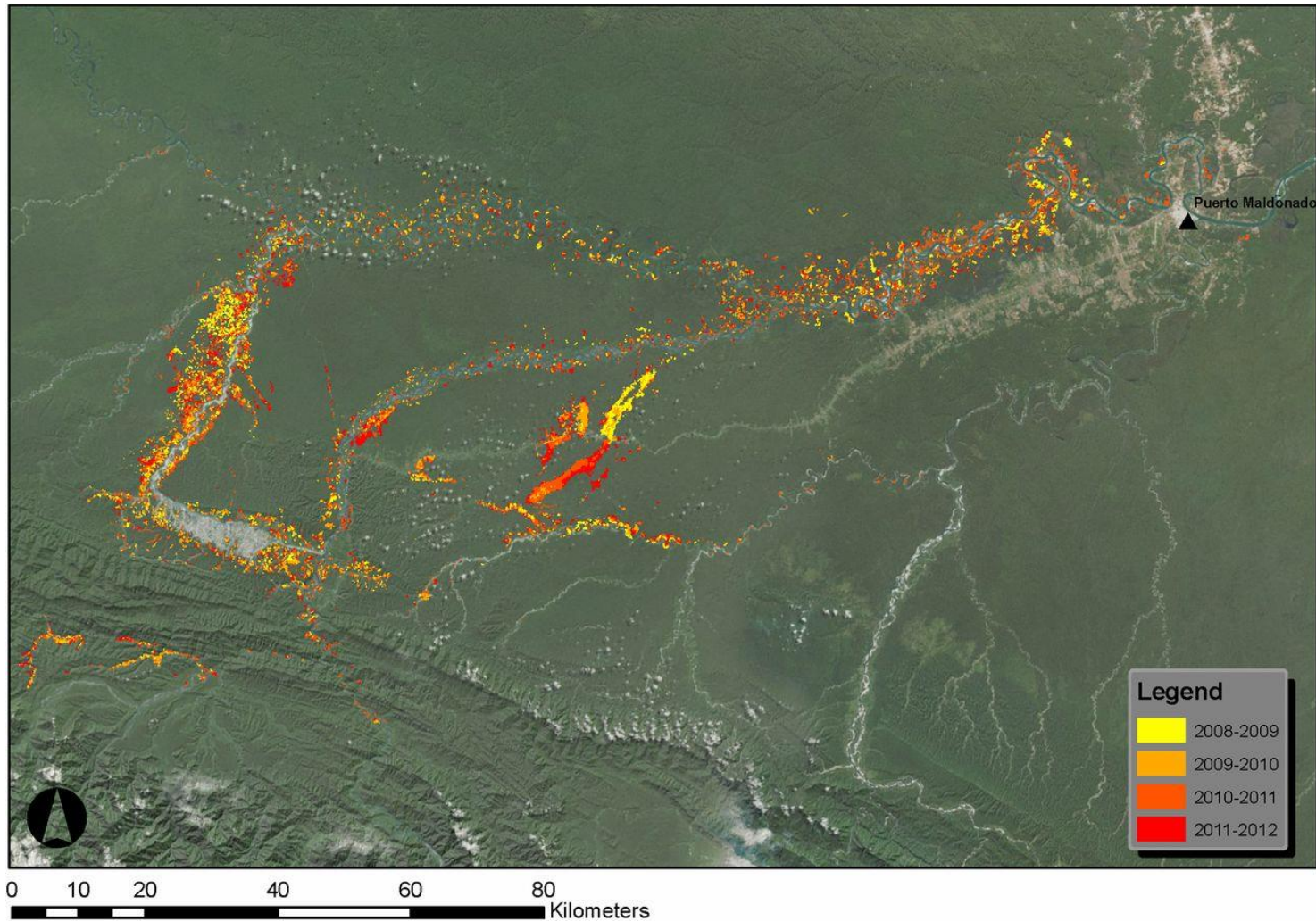


# The regional extent and occurrence of small and large mines throughout the southern Madre de Dios region.



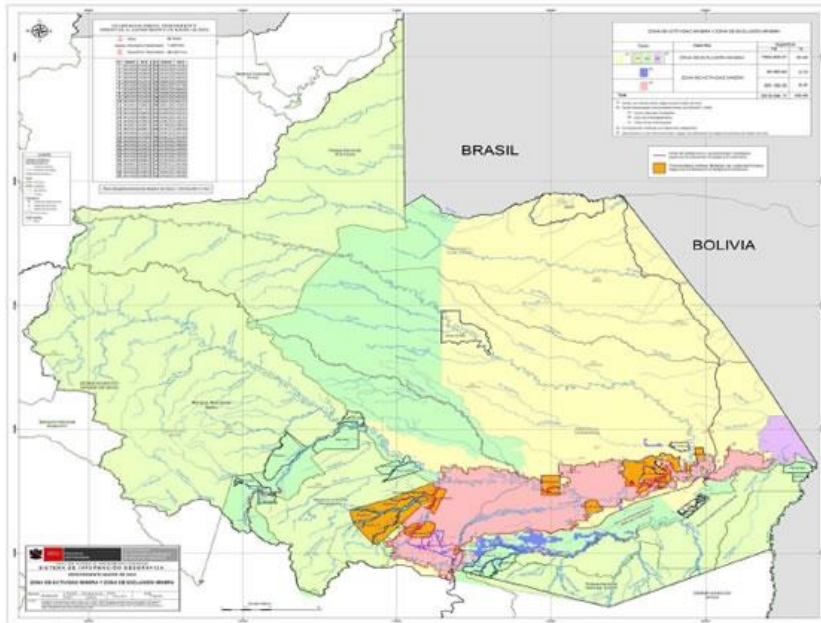
Asner G P et al. PNAS 2013;110:18454-18459

**New deforestation driven by small and large gold mining operations in the years 2008–2012, following the global financial recession and the rapid increase in gold prices.**



**Asner G P et al. PNAS 2013;110:18454-18459**

# Land use planning – gov't designated “mining corridor” in 2010



ZONA DE ACTIVIDAD MINERA Y ZONA DE EXCLUSIÓN MINERA

Color	Describe	Superficie	
		Ha	%
(1) <span style="display: inline-block; width: 15px; height: 15px; border: 1px solid black; background-color: yellow;"></span> (a) <span style="display: inline-block; width: 15px; height: 15px; border: 1px solid black; background-color: lightgreen;"></span> (b) <span style="display: inline-block; width: 15px; height: 15px; border: 1px solid black; background-color: lightblue;"></span> (c) <span style="display: inline-block; width: 15px; height: 15px; border: 1px solid black; background-color: lightpurple;"></span> (2)	ZONA DE EXCLUSIÓN MINERA	7'904.908.07	92.80
(3) <span style="display: inline-block; width: 15px; height: 15px; border: 1px solid black; background-color: blue;"></span>	ZONA DE ACTIVIDAD MINERA	62.292.84	0.73
(4) <span style="display: inline-block; width: 15px; height: 15px; border: 1px solid black; background-color: red;"></span>		551.195.26	6.47
<b>Total</b>		<b>8'518.396.17</b>	<b>100.00</b>

(1) Áreas con Restricciones según la ZEE Madre de Dios

(2) Áreas Restringidas a la Actividad Minera (H GEMMET, 2008)

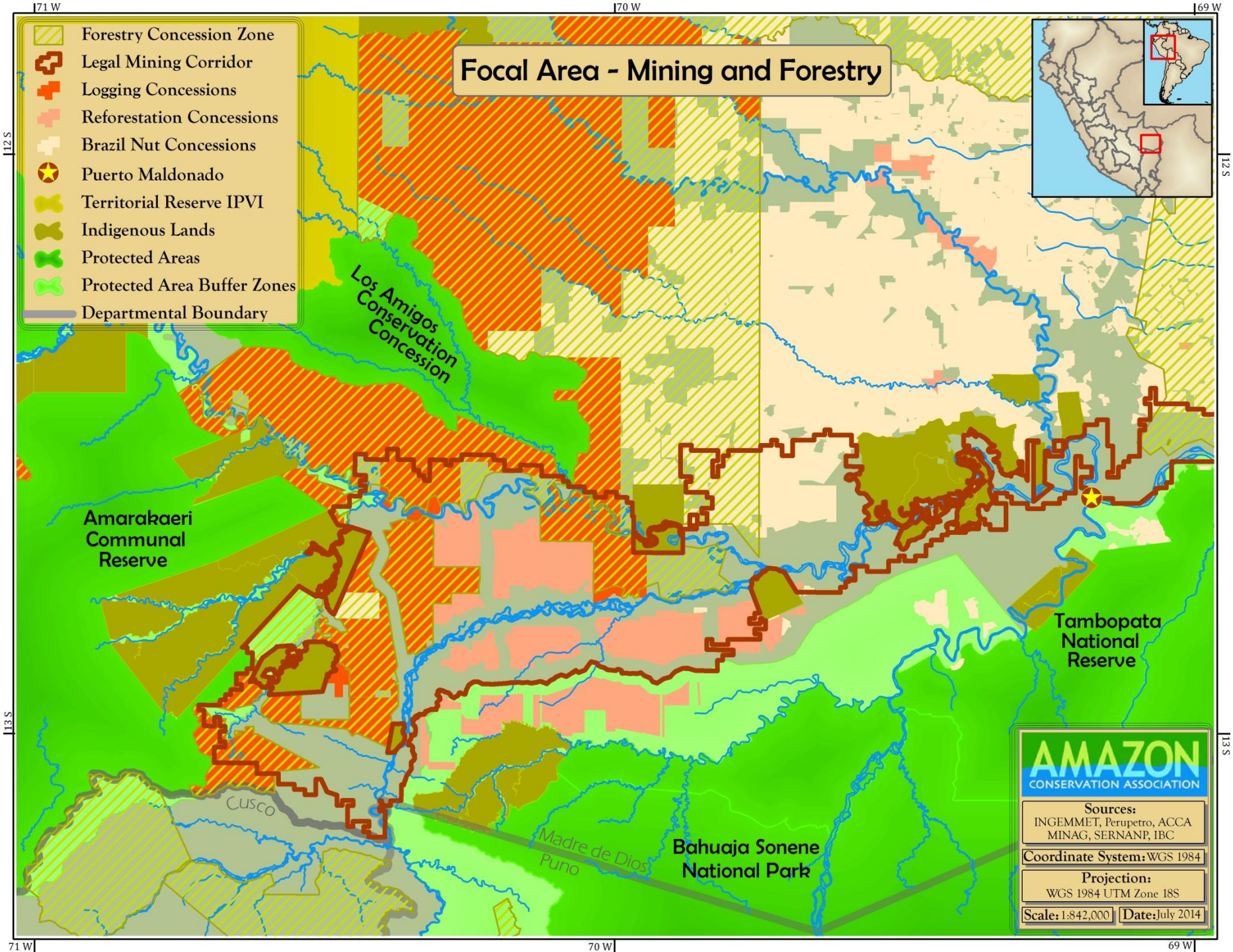
(a) Áreas Naturales Protegidas

(b) Zona de Amortiguamiento

(c) Otras Áreas Restringidas

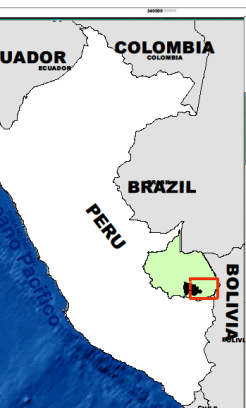
(3) Concesiones mineras con derechos adquiridos

(4) Zona Minera o con Potencial Minero según la Zonificación Ecológica Económica de Madre de Dios

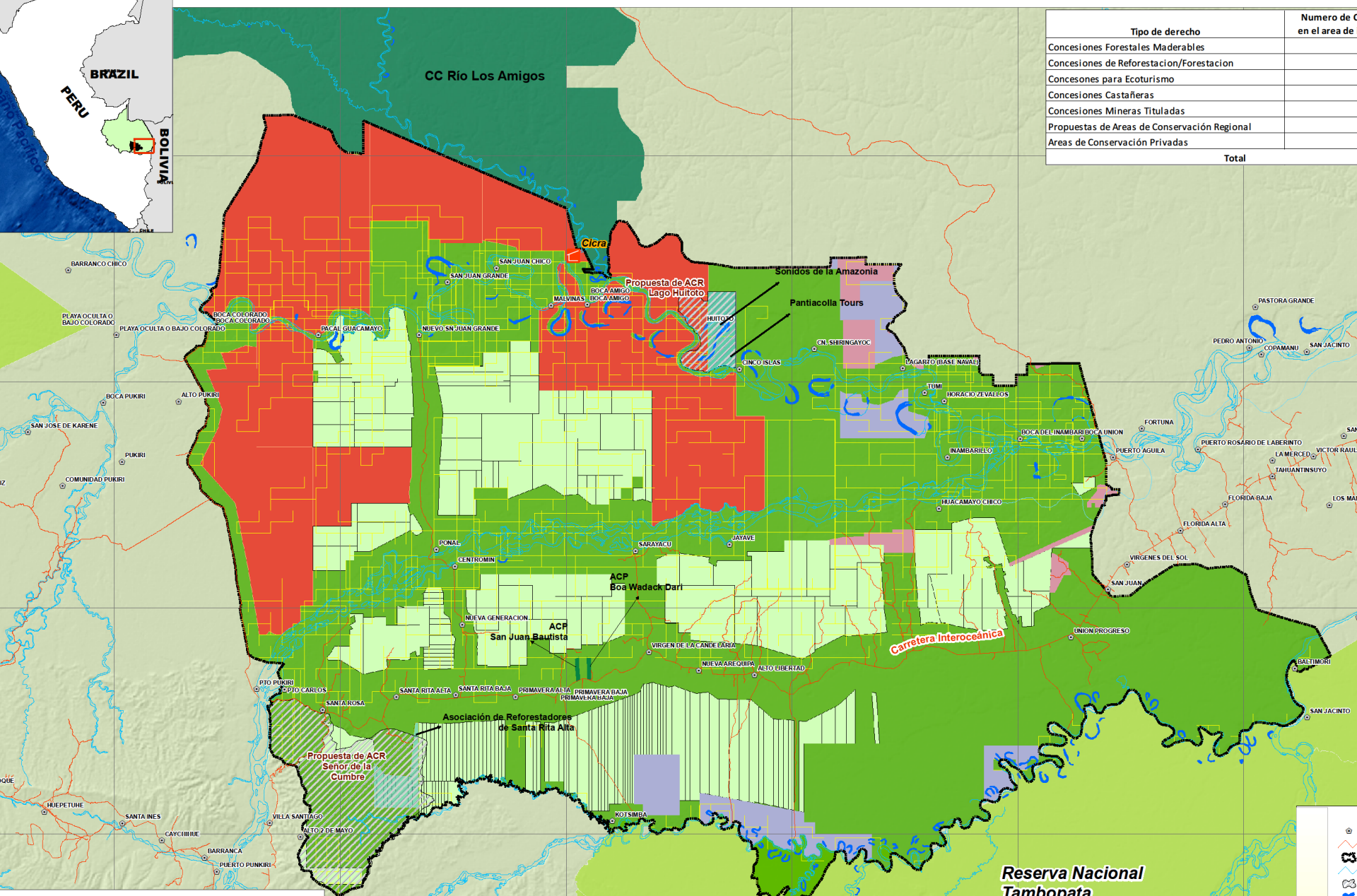




# Derechos de Usos Existentes en el Ambito del Corredor de Conservación MAT



Tipo de derecho	Numero de C en el area de
Concesiones Forestales Maderables	
Concesiones de Reforestacion/Forestacion	
Concesiones para Ecoturismo	
Concesiones Castañeras	
Concesiones Mineras Tituladas	
Propuestas de Areas de Conservación Regional	
Areas de Conservación Privadas	
<b>Total</b>	



Asociación para la Conservación de la Cuenca Amazónica

Reserva Nacional  
Tambopata



# Focal Area - Deforestation

- Legal Mining Corridor
- Deforestation
- 2006 - 2012 Mining Deforestation
- Puerto Maldonado
- Territorial Reserve IPVI
- Indigenous Lands
- Protected Areas
- Protected Area Buffer Zones
- Departmental Boundary
- InterOceanic Highway
- Secondary Roads



Los Amigos  
Conservation  
Concession

Amarakaeri  
Communal  
Reserve

Tambopata  
National  
Reserve

Cusco

Madre de Dios  
Puno

Bahuaja  
Sonene  
National  
Park

**AMAZON**  
CONSERVATION ASSOCIATION

Sources: INRENA/CONAM, INGEMMET, Perupetro, ACCA, MINAG, SERNANP, IBC, MTC, Asner et al 2013 PNAS, Hansen et al 2013 Science

Coordinate System: WGS 1984

Projection: WGS 1984 UTM Zone 18S

Scale: 1:842,000 Date: July 2014

12 S

13 S

12 S

13 S

71 W

70 W

69 W

71 W

70 W

69 W

Short, biweekly news roundups (in English) on ASGM issues in Peru available at:

- [http://www.amazonconservation.org/ourwork/conservation\\_threats.html](http://www.amazonconservation.org/ourwork/conservation_threats.html)