

# Ecology's Tools for Acquiring, Assessing, and Displaying Water Quality Data

Jennifer Carlson  
Washington State Department of Ecology  
May 30, 2018





## Presentation Topics

Acquire

Assess

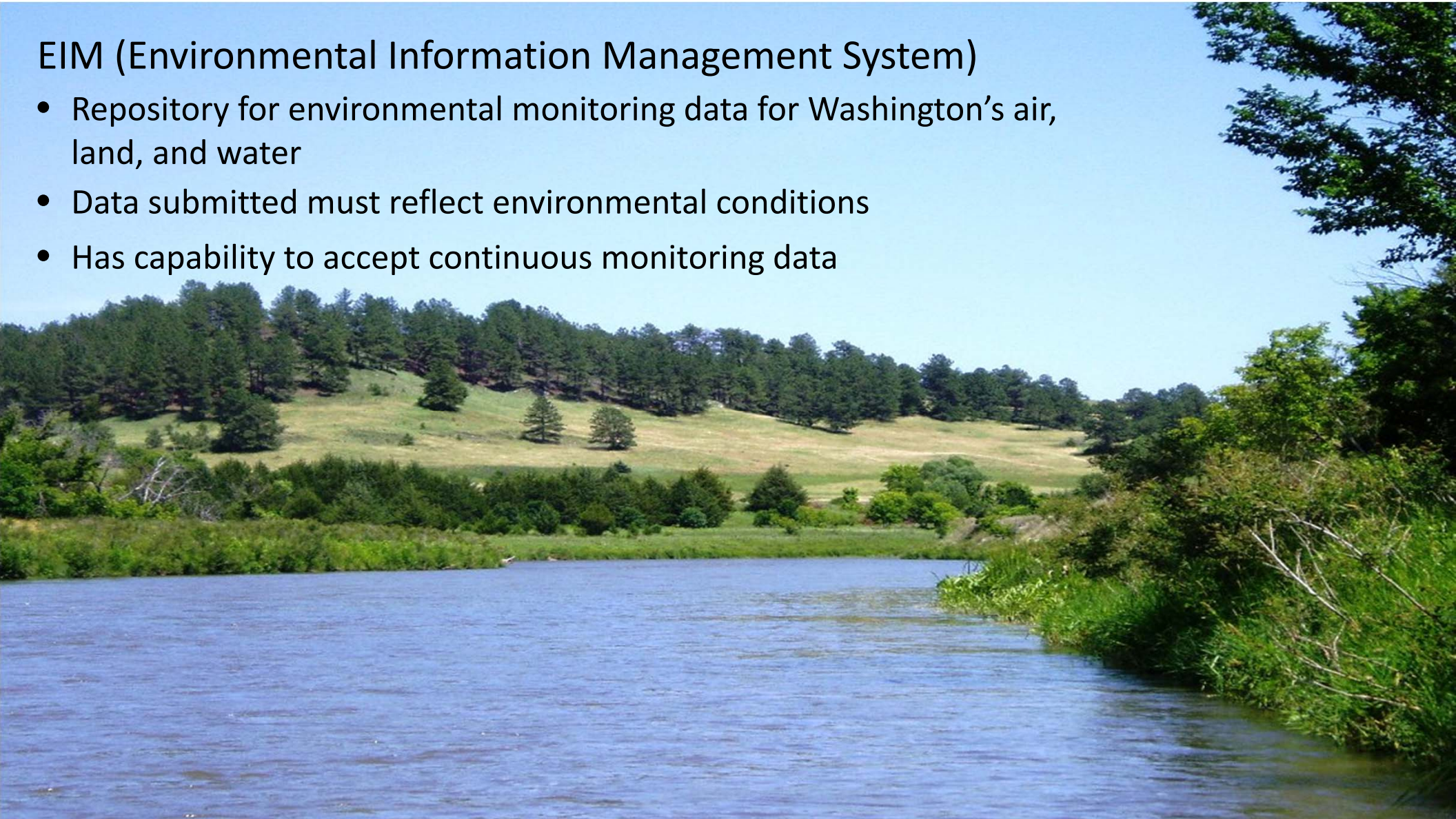
Display

## *Acquiring Data*



## EIM (Environmental Information Management System)

- Repository for environmental monitoring data for Washington's air, land, and water
- Data submitted must reflect environmental conditions
- Has capability to accept continuous monitoring data

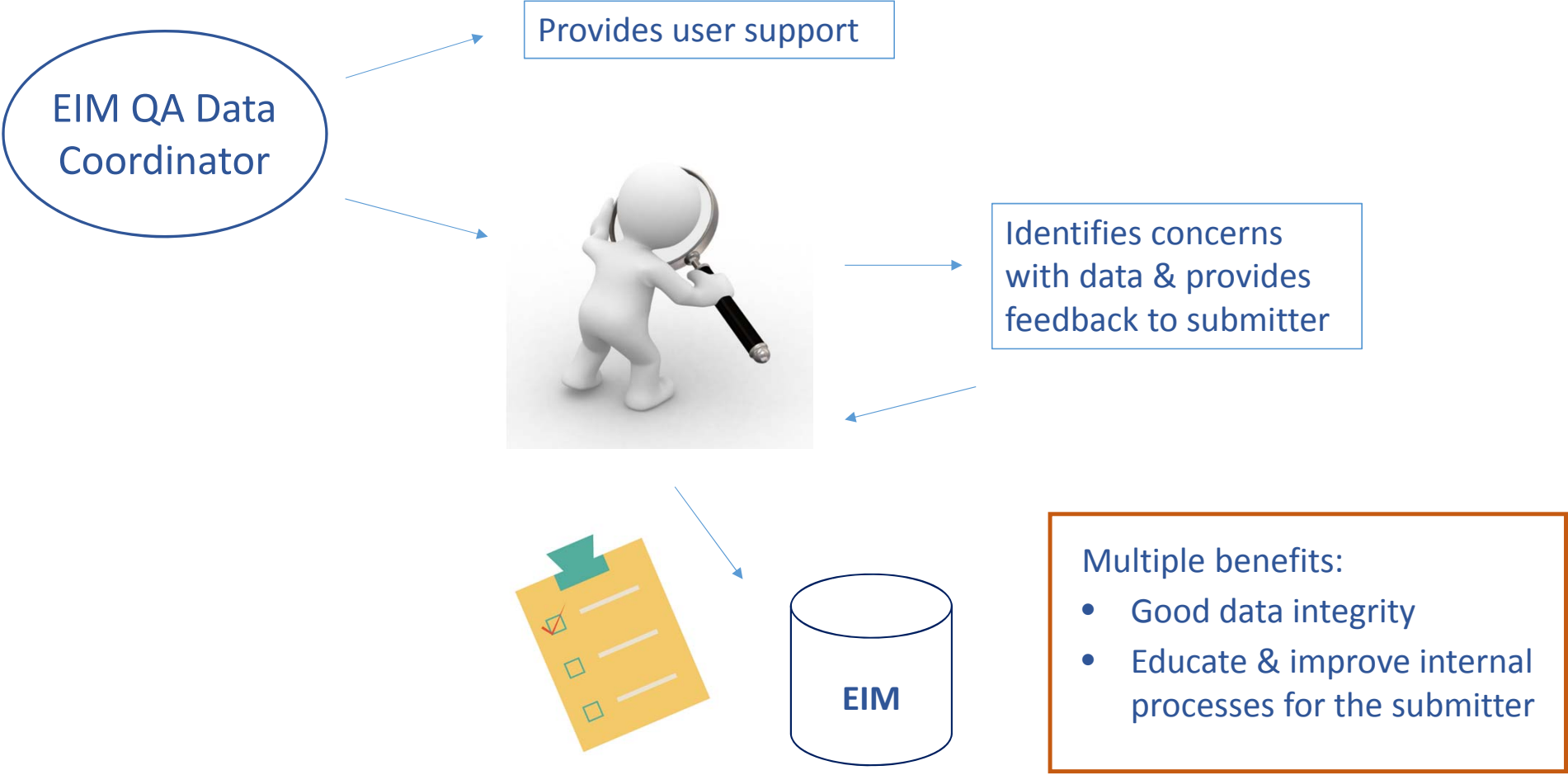




Who submits data to EIM?



# How does external data get into EIM?

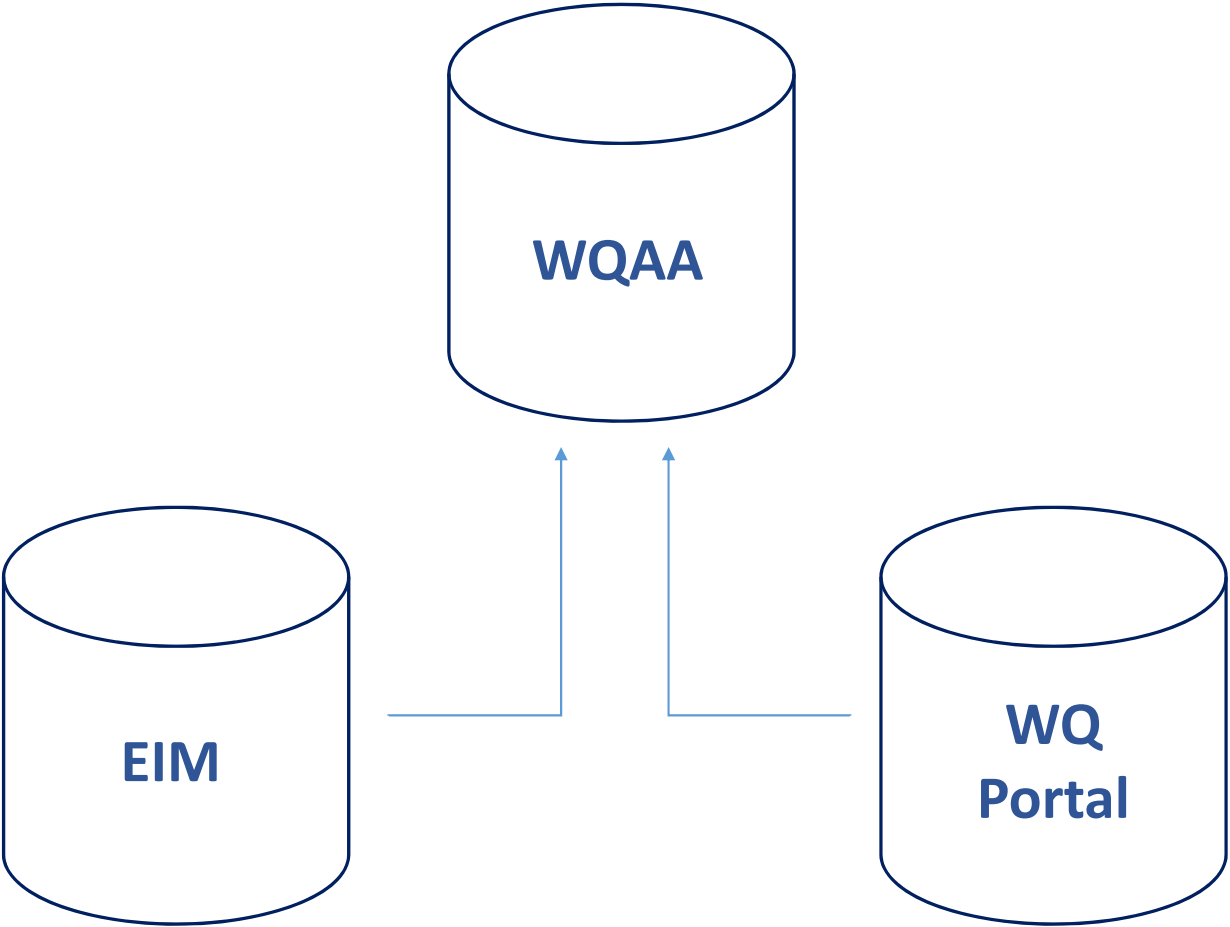


## *Assessing Data*





# Water Quality Assessment Automation



Status: Data pull complete

Standards: [Surface Waters, Revised on: 1/1/2012](#)



## Data pull

[+ Re-pull a study](#)   [+ Re-pull all assessment units](#)

4 records Page 1 of 1

Pull or Re-Pull	Study ID	Organization ID	Started on	WQ Portal status	Studies	Locations	Results	EIM status	Studies	Locations	Discrete results	Continuous results	Calculated results	Assessment unit status	Assessment units	Validation status
Re-pull	WQDATA	1119USBR_WQX	4/13/2018	Ready for validation	1	258	99,760	N/A						N/A		Completed
Re-pull	GTUT0001		3/2/2018	N/A				Ready for validation	1	15	21,501	0	0	N/A		Completed
Re-pull			12/28/2017	N/A				N/A						Ready for validation	1,699,556	Completed
Pull			7/6/2017	Ready for validation	829	14,647	6,363,426	Ready for validation	3,013	114,712	1,817,715	40,606,730	2,059,143	Ready for validation	701,898	Completed

4 records Page 1 of 1

### Step 1: [Group data](#)

Match EIM & WQ Portal media and parameters to WQ Assessment values so the data can be grouped under parameter groups. See which WQ Portal units that need to be added to EIM.

### Step 2: [Filter data](#)

Mark which EIM and WQ Portal lookup values are not assessable to filter the results.

### Step 3: [Review studies and locations](#)

Review studies and locations flagged for review. Flag studies and locations that are not assessable. Import NHD and grid cell information from ArcMap to match locations to their assessment units.

### Step 4: [Review grouped and standardized results](#)

Review missing unit conversions. Review results grouped by their parameter group and their assessment unit.

### Step 5: [Run assessments](#)

## *Displaying Data*



## Map water quality data

## CHOOSE TOPIC:

**Water quality standards**

Assessed waters / sediments

Permits / outfalls

Improvement projects (TMDLs)

## SEARCH BY:

 Marine and freshwater[Learn about water quality standards](#) Marine Freshwater

## GO TO:

Washington State

Enter city, county, legislative district, watershed, waterbody, or improvement project

Map

Yakima River as viewed from Highway 821, by [Farwestern](#) Photo by Gregg M. Erickson - Own work, [CC BY 3.0](#), via [Wikimedia Commons](#)



Questions?

[jennifer.carlson@ecy.wa.gov](mailto:jennifer.carlson@ecy.wa.gov)  
360-407-6701