

# MA-ShellfAST

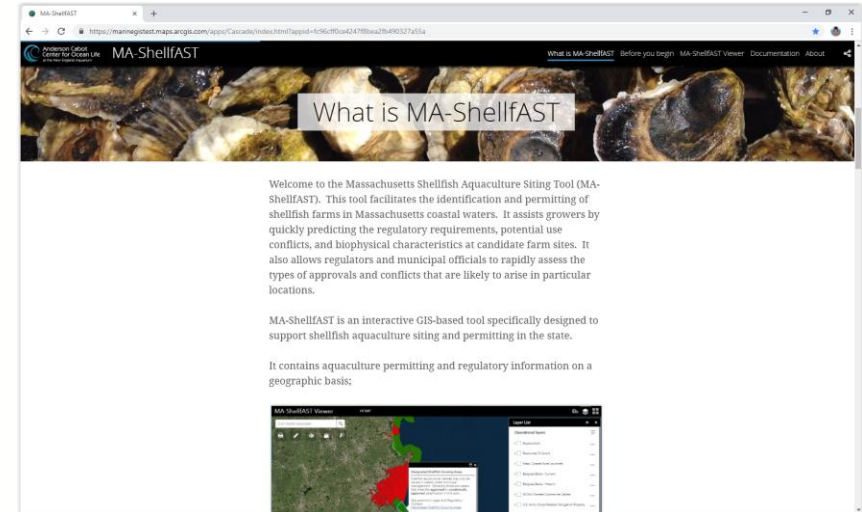
Components, Platform, Data

**This information can be found in the MA-ShellfAST Technical Report listed on the Home page.**

# Components

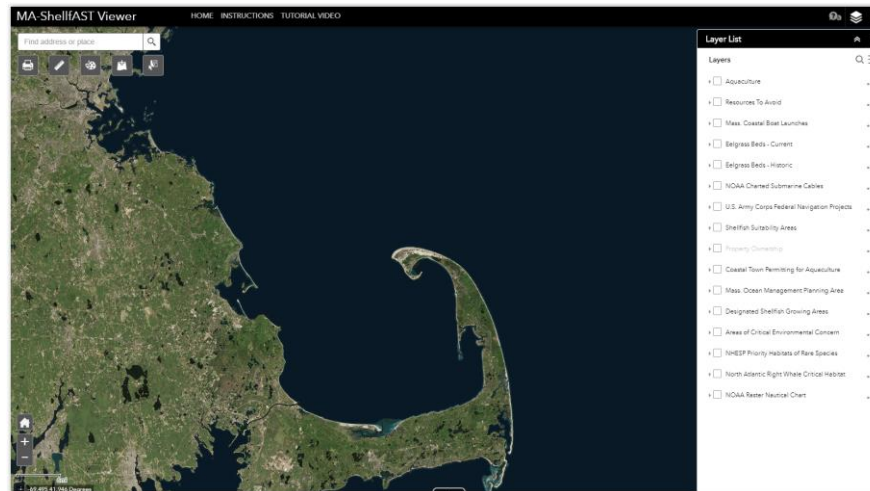
- **Home Page**

- Background information, links to documentation, tutorial, instructions, links to the Viewer



- **Viewer**

- The tool



# Platform

- **ArcGIS Online**
  - Environmental Systems Research Institute (ESRI) cloud-based mapping platform
  - Homepage: Story Map Cascade Template
  - Viewer: Web AppBuilder for ArcGIS
- **Currently all hosted on the Anderson Cabot Center for Ocean Life at the New England Aquariums ArcGIS Online Account**

# Live tool demo

[shellfast-ma.com](http://shellfast-ma.com)

# Challenges & Constraints

**This information can be found in the MA-ShellfAST Technical Report listed on the Home page.**

# Out-of-the-box vs. Customization

## Out-of-the-box

### Advantages

- No coder needed
- Can host on ArcGIS Online hosting platform
- Programming language updated as new versions released

### Disadvantages

- Little options for application customization

# Out-of-the-box vs. Customization

## Customized

### Advantages

- You have more options in customizing your Application
  - Configuration of tools, widgets, layouts, colors, etc.

### Disadvantages

- Need to host yourself (not with ESRI)
- A coder/developer would be needed
- As new versions of programming language are released, it would need to be updated
- Continuous funding would be needed

# Datalayers

- **How many and what layers to include**
  - Advisory Committee
  - Keep it as simple as possible
- **How to organize those layers**
  - Viewer template used does not allow for layer grouping or nesting
  - Layers drawn in order they are listed in the Layer List
  - Example: *Resources to Avoid*; 5 separate layers were combined into one
- **Technical Constraints**
  - http or https: mixed content, sometimes layers won't load
- **How to keep layers updated**



# Funding, Hosting and Tool Migration

- **Funding**

- Needed for initial tool development, but also need additional funding to keep tool running after initial development
- Cost: Server where tool is hosted (ArcGIS Online Account or alternative webserver)
- Cost: Developer updating tool if customized or adding new or updated layers when available
- Cost: Time for user support (contact person addressing technical problems/questions)

- **Hosting**

- Transfer application to organization/agency that has resources to maintain it
- Would be helpful to know who so during development understanding how to move application, datalayers, and supporting documentation without 'breaking' it

- **Service Plans**

- Currently MA-ShellfAST does not have an adoptive organization or future funding for tool maintenance

# MA-ShellfAST Development

- **Out-of-the-box template**
  - Would last the longest without more funding
- **Datalayers**
  - Linked to as many service layers hosted by other organizations/agencies as possible
    - Keep data updated
  - Example: Eelgrass.
    - We could host *Eelgrass - Historic* data
      - not going to change, doesn't need updating
    - Link to *Eelgrass - Current* data
      - Northeast Ocean Data Portal - service updates as new data is available

# Tool Design & Instructions

## Who is the target audience?

- **(1) Potential Shellfish Farmers**
  - Where in the process are they?
    - Already know where they want to site and want to verify?
    - Going in blind looking for a site?
  - Computer savvy?
- **(2) State or local regulatory/permitting agency or extension professional**
- **Included:**
  - User Instructions
  - Pop-up info for each datalyer and how to use it
  - Tutorial Video
  - Help Section