



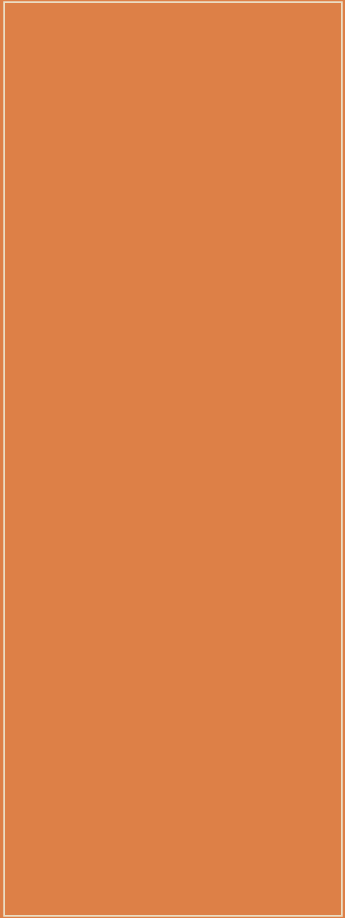
In-Lieu Fee Program Training
September 13-14, 2011

Structuring ILF programs & ILF Reporting



**ENVIRONMENTAL
LAW • INSTITUTE®**

Structuring an ILF Program & ILF Reporting

- 
- Structuring ILF programs
 - ▣ ILFs with pre-identified sites
 - ▣ ILFs with possible areas of operation
 - ▣ ILFs with decision-making framework for site selection
 - ▣ Integration with HCPs and SAMPs
 - Reporting requirements of ILF programs

Structuring an ILF Program



Compensation Planning Framework
must include:

A prioritization strategy for selecting and implementing compensatory mitigation activities

Structuring an ILF Program

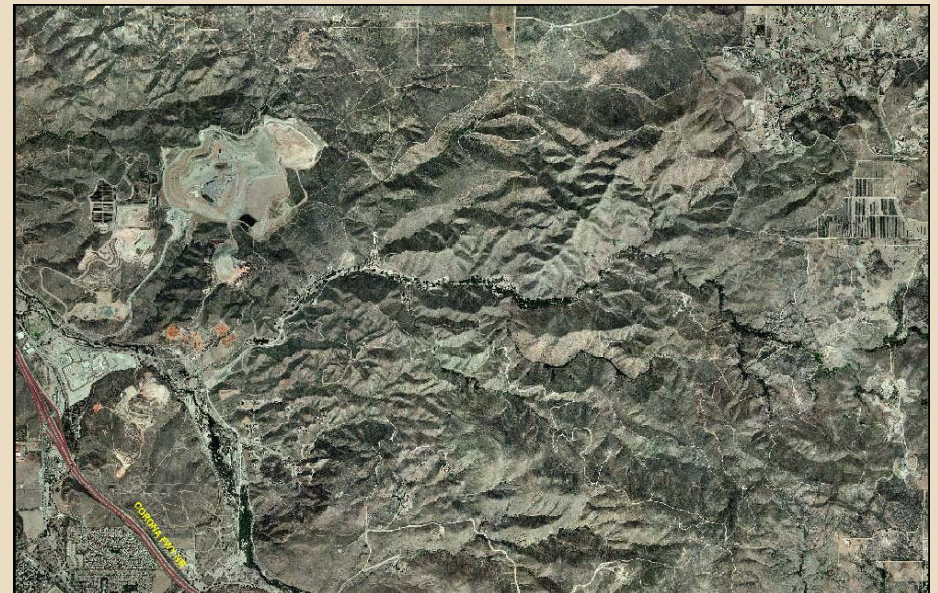
1. ILFs with pre-identified sites
2. ILFs with possible areas of operation
3. ILFs with decision-making framework for site selection
4. ILF integration with HCPs and SAMPs

1. ILFs with pre-identified sites

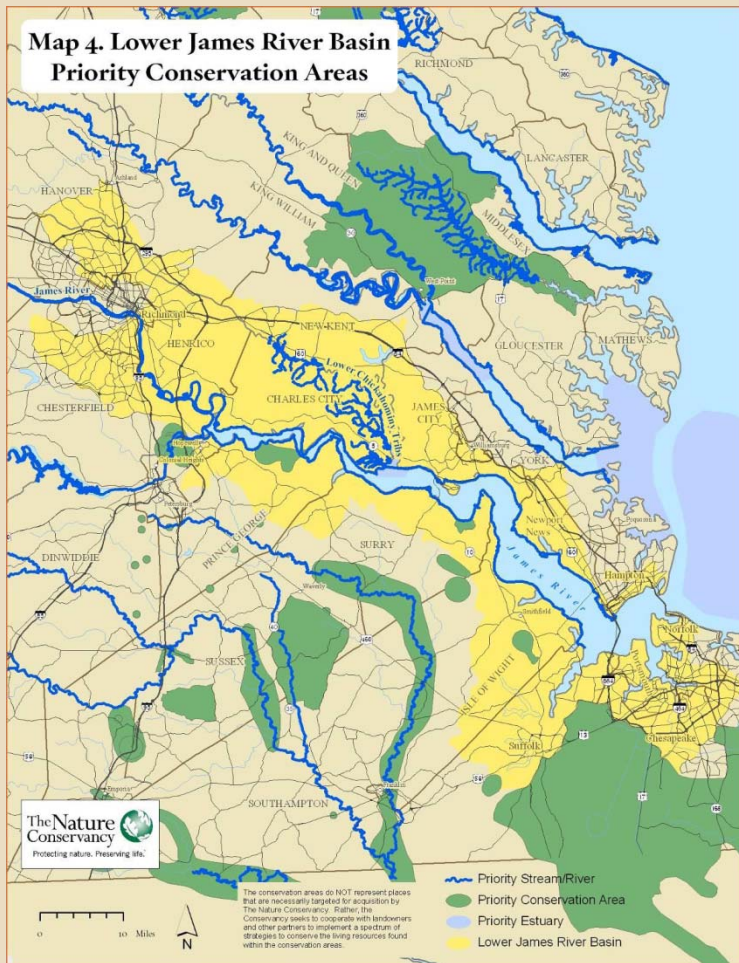


Dawson Canyon

**Proposed: Riverside-Corona
Resource Conservation District
In-Lieu Fee Program**



2. ILFs with possible areas of operation



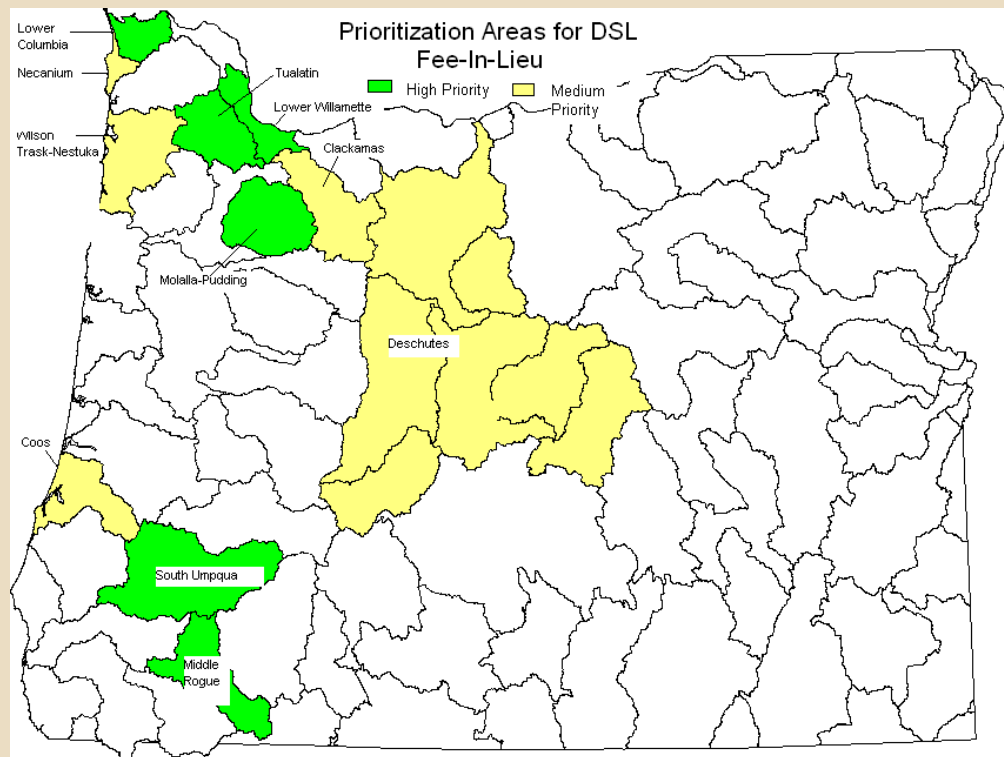
- Priority conservation areas (stream/river, estuarine, karst areas, conservation area)
- Habitat type
- Acres or stream miles

2. ILFs with possible areas of operation

Service Area	Wave Exposure Zone ¹			
	1	2	3	4
Hawai‘i Island	N/A	Papawai Bay	Puakō- Keahole	N/A
Maui Nui	N/A	Ka‘anapali-Honokowai	Kanaha	Moloka‘i North Shore
O‘ahu	N/A	Kāne‘ohe Bay	Maunalua Bay	N/A
Kaua‘i Ni‘ihau	N/A	Hanepepe	N/A	Ha‘ena-Hanalei

Table 5. Possible candidate mitigation project sites (identifying one per wave exposure zone by service area where there are anticipated permitted actions)

2. ILFs with possible areas of operation

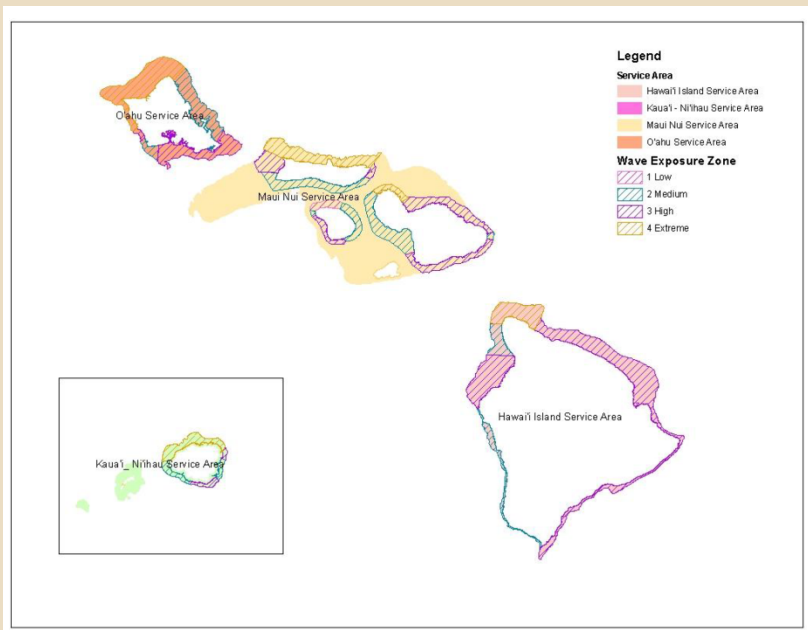


Priority Watersheds

Priority watersheds are selected based on:

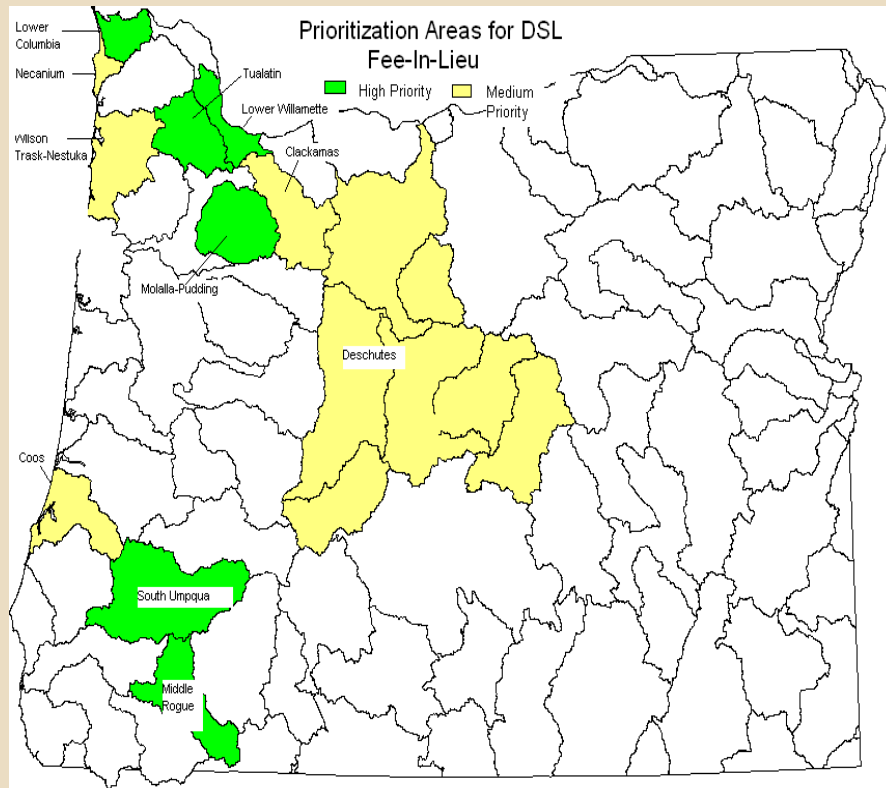
- Past mitigation needs
- Future mitigation needs
- Lack of private banks
- Availability of funds

3. ILFs with decision-making framework for site selection



- 1) In the same service area (e.g., Oahu)
- 2) Support or have the potential to support the appropriate aquatic resource(s), and
- 3) Within the same wave exposure zone as the impact site.


3. ILFs with decision-making framework for site selection



Priority Watersheds

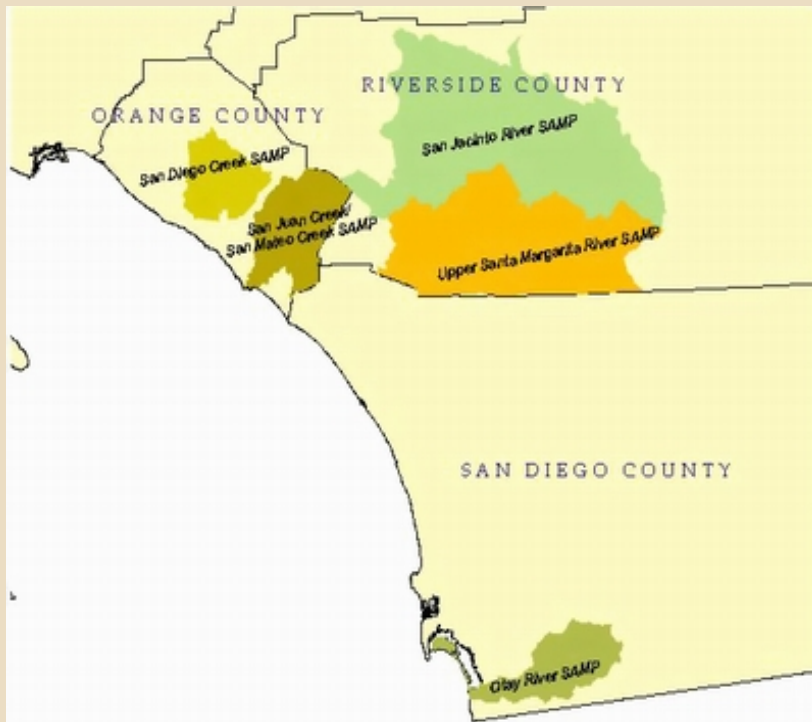
- Likelihood of success
- Multiple objectives
- Supports regional conservation initiatives
- Capacity of the applicant
- Fund leveraging and project costs
- Long-term management

4. Integration with HCPs and SAMPs



Special Area Management
Plans (SAMPs)
Habitat Conservation Plans
(HCPs)

Watersheds with SAMPS



- Orange County:
 - San Diego Creek
- Orange County:
 - San Juan Creek/ San Mateo Creek
- Riverside County:
 - San Jacinto River
 - Upper Santa Margarita River
- San Diego County:
 - Otay River

Multiple HCPs

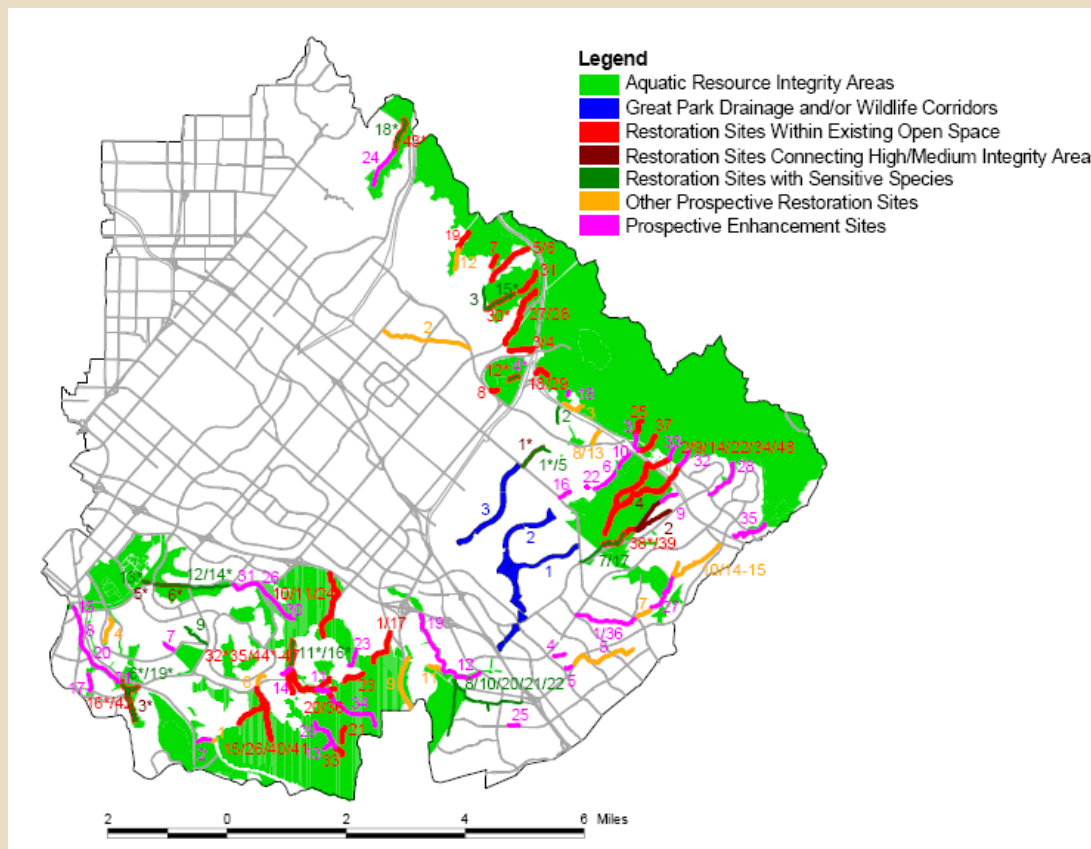


**Coachella Valley Multiple Species
Habitat Conservation Plan**

Opportunities to Integrate HCPs and SAMPs with ILF Programs

- Coordinate planning with Compensation Planning Framework
- Coordinate with permitting

Coordinate Planning: San Diego Creek Watershed SAMP Strategic Mitigation Plan



- Aquatic Resource Integrity sites
- Restoration sites
- Enhancement sites

Prioritized riparian ecosystem restoration and enhancement opportunities

Coordinate with permitting

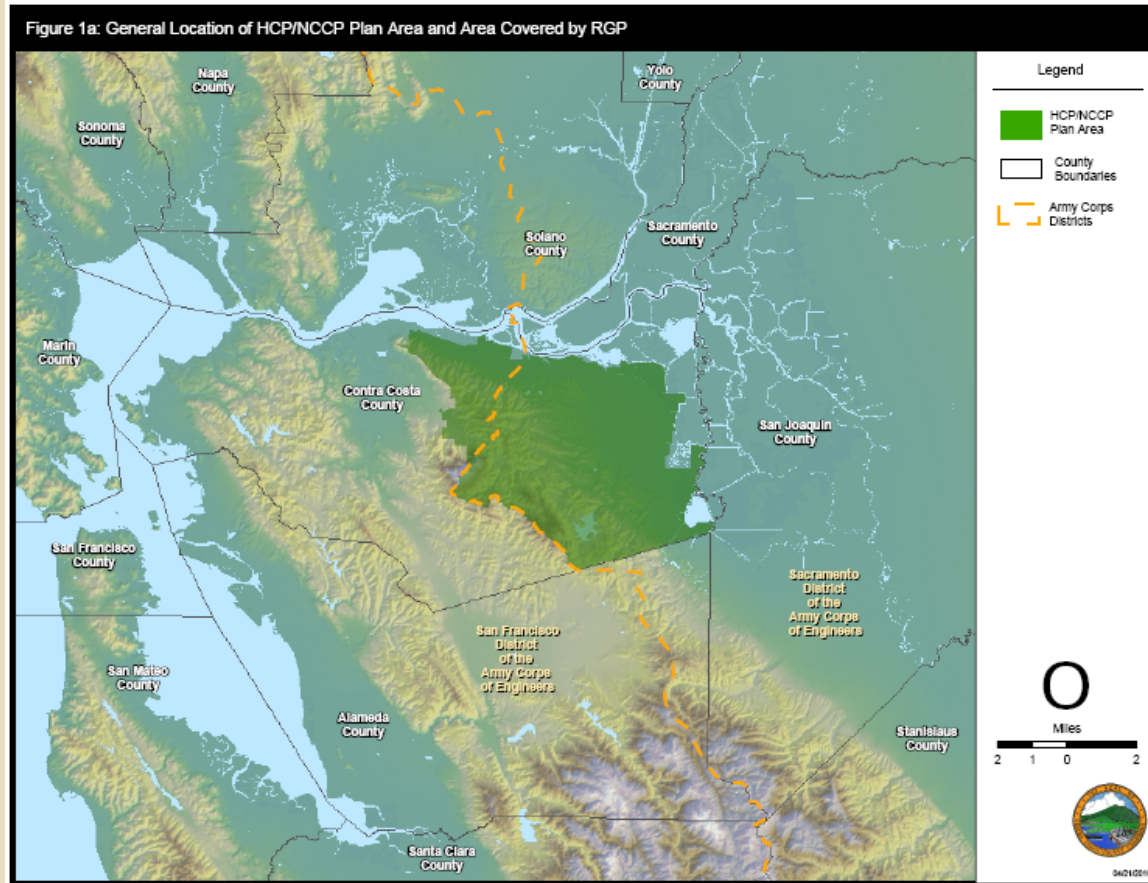
- Types of permits:
 - Individual permits
 - General permits
 - Nationwide permits (NWP)
 - Programmatic general permits (PGP)
 - Regional general permits (RGP)

Regional General Permits in the LA District



**RGP 22: Colorado River Backwater
Imperial National Wildlife Refuge
Yuma, Arizona**

Integrating HCPs and ILFs



Proposed East Contra Costa County Habitat Conservancy ILF Integrated with HCP

Integrating HCPs and ILFs



**Coachella Valley Multiple Species
Habitat Conservation Plan**

ILF Reporting Requirements

1. Monitoring Reports
2. Credit transaction notification
3. Annual program report: financial and credit accounting
4. Annual financial assurances and long-term management funding report

1. Monitoring Reports

- Purposes. To determine if:
 - ▣ The project is meeting its performance standards
 - ▣ Measures are necessary to ensure that the project meet its objectives
- Monitoring requirements are developed for each individual project and are included in the project-specific mitigation plans
- Corps must provide to interested parties upon request

2. Credit transaction notification

- Documentation of credit transaction
- Must include:
 - Signature of sponsor
 - Permit number
 - Statement indicating the number and type of credits purchased

3. Annual program report: financial and credit accounting

- Financial program account
 - All income received and interest earned – for program and by service area
 - All permits for which fees were accepted – by service area
 - Description of program expenditures/disbursements – for program and by service area

3. Annual program report: financial and credit accounting

- Ledger (credit) reporting:
 - The balance of advance credits and released credit – by program and service area
 - Permitted impacts for each resource type
 - All additions and subtractions of credits
 - Other changes in credit availability

4. Financial assurances and long-term management report

- Beginning and ending balances of the accounts
- Deposits into and withdrawals from the accounts
- Information on the amount of required financial assurances and the status of those assurances, including their potential expiration.



Questions?