



Department of Environmental Quality

cam.mcnutt@ncdenr.gov July 2022

*Protection Learning Exchange Session 7
Tracking Restoration and Protection Plan Implementation*



Overview

- Tracking at Project Level (WIPS)
- Tracking Incremental Success and ROI (PEET)
- Tracking Before and After (PLEM)
- ATTAINS (they do know this yet-sshhh)

Survey123 for ArcGIS

NC Watershed Improvement Projects Tr...

Project Description
Brief description of project

Implementation Date
date project was completed

Project Status
Proposed is for designed and ready for funding

Proposed

Completed

Project Notes

Total Project Cost

Funding Source(s)

Watershed Improvement Projects

Project Status- This will be used along with project type for map symbolizing

Project Status=Proposed

Project is planned, has a conceptual plan and is in the process of finding funding. Do not complete implementation date for proposed projects. These will be replaced once a project is completed. Note- some projects may be proposed for a long time

Project Status=Completed

Project has been completed and in the monitoring phase

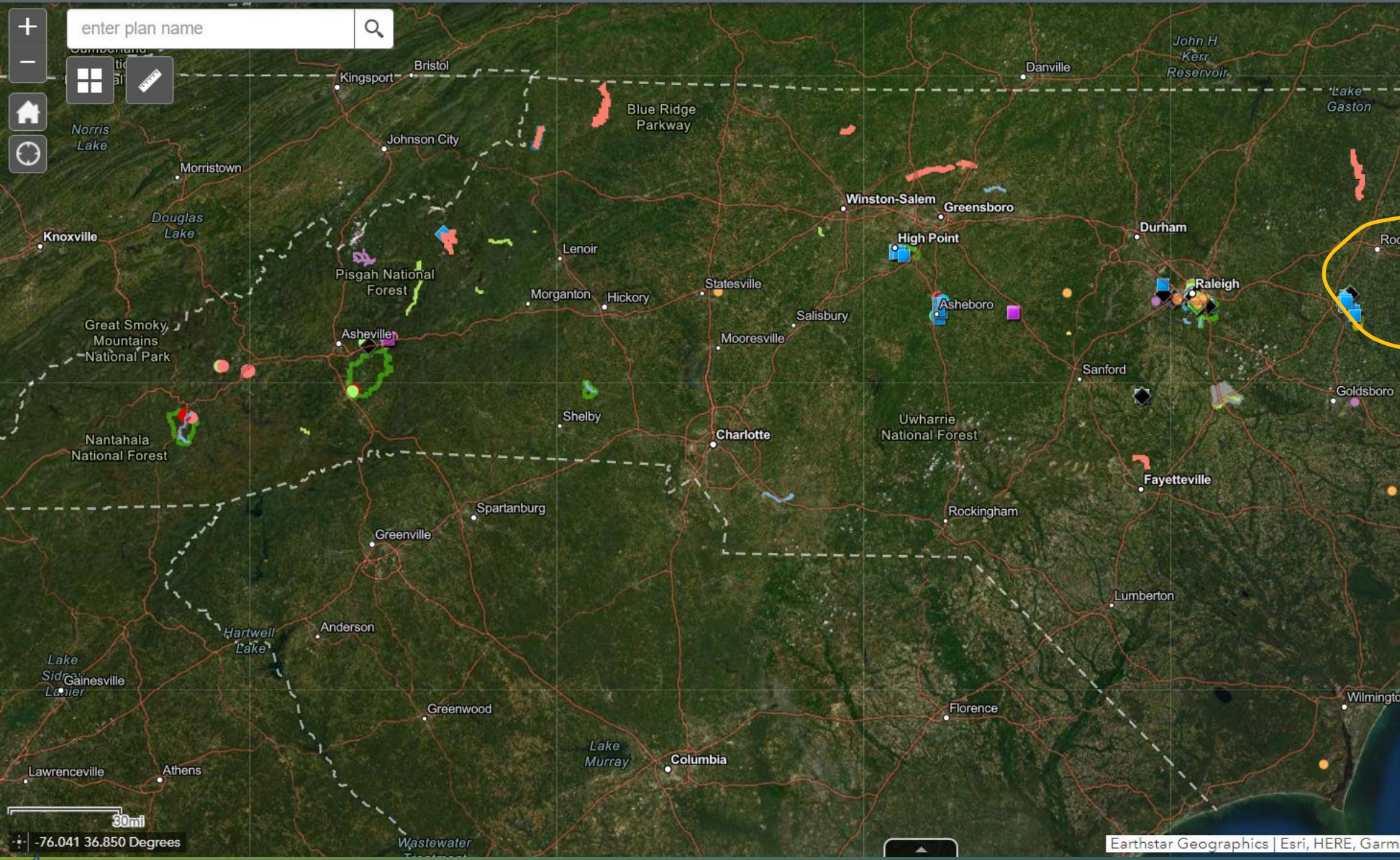
Project Notes- Any notes on project

Total Project Cost- Enter a number with no symbols

WIPS



DEQ Watershed Action Plan Sources and Solutions Tools



Legend

- Downspout Disconnection
- Pollution Removal
- Rain Barrell Installation
- Rain Garden Installation
- Stream Trash Cleanup

NC WIPS2 Status

- Proposed
- Completed

NC WIPS2 Project Type

- Restoration
- Education
- Protection

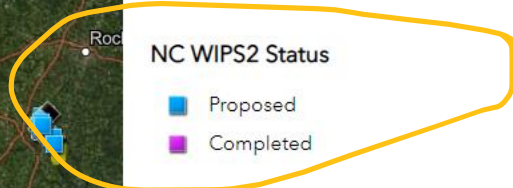
WIPS 1.0 Retired Project Types

- Restoration
- Protection
- Education
- Other

WIPS 1.0 Retired Project Status

- Completed
- Proposed
- Other

SCITS Strength



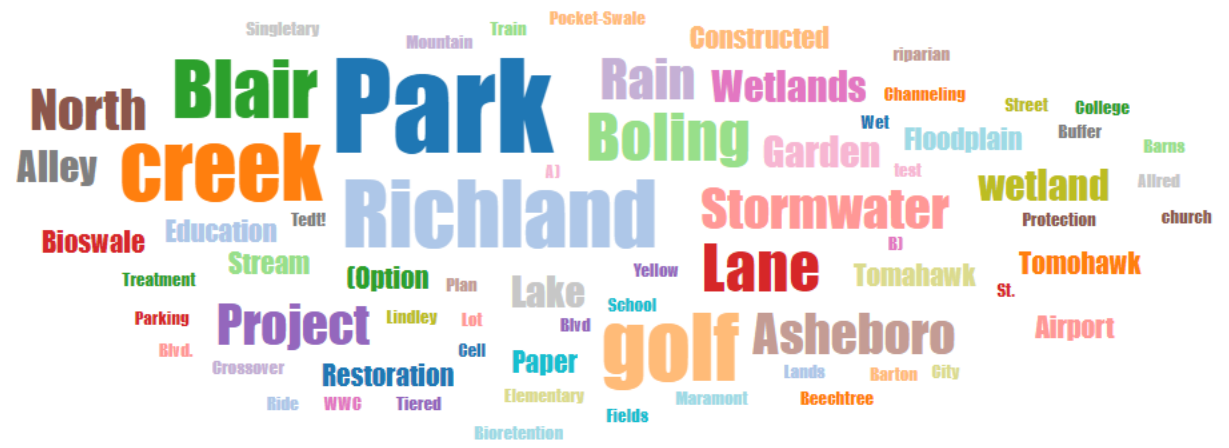
Navigation

Filter questions

- This app is for entering and tracking water resource restoration, protection and environmental education projects.
- Project Name
- Project Agency or Group
- Project Contact
- Project Type
- Project Description
- Restoration Project Type
- Protection Project Type
- Education Project Type

WIPS

Project Name Word cloud



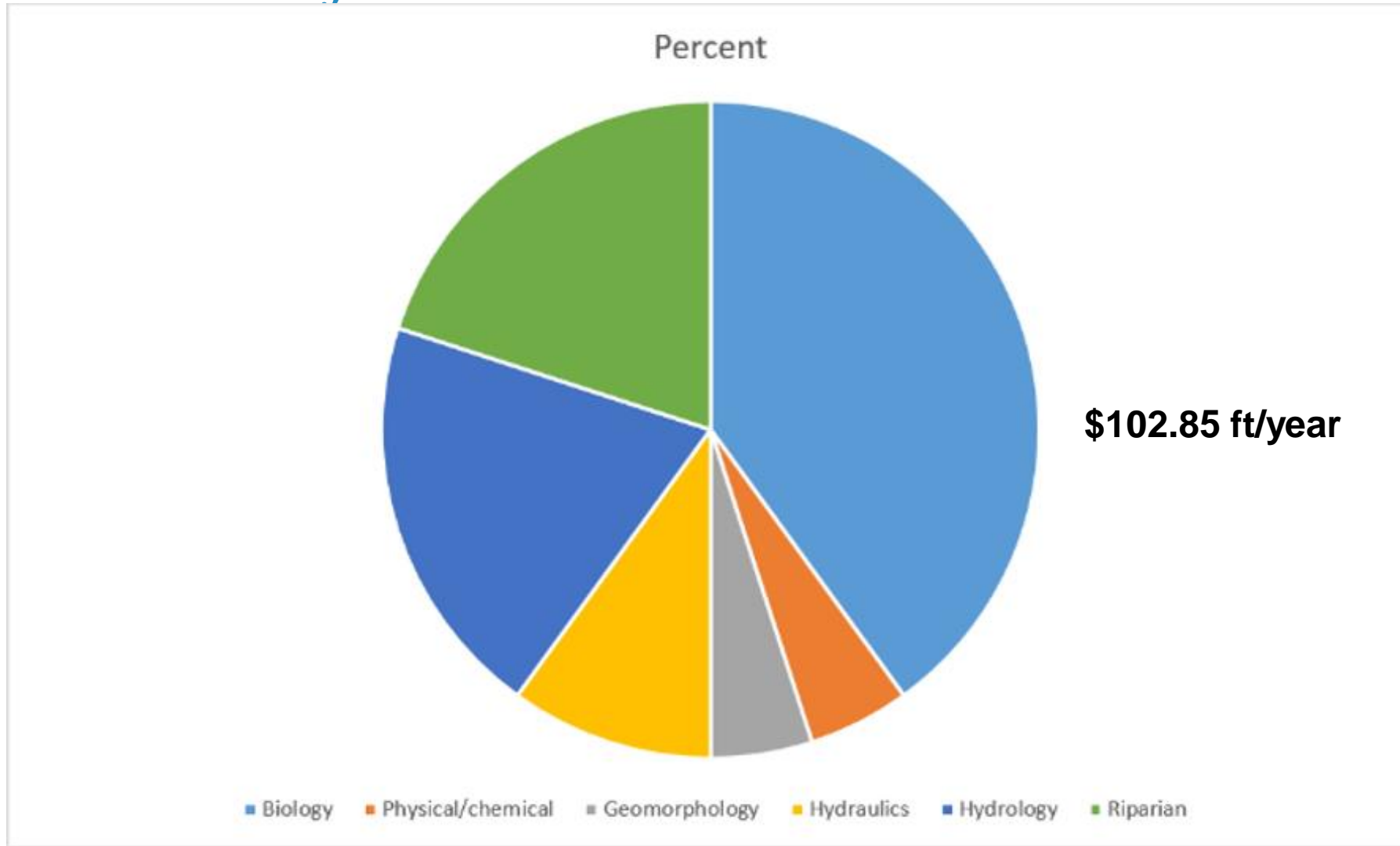
[Hide table](#)

[Show responses](#)

Word	Count
Park	10

Project Economic Evaluation Tool

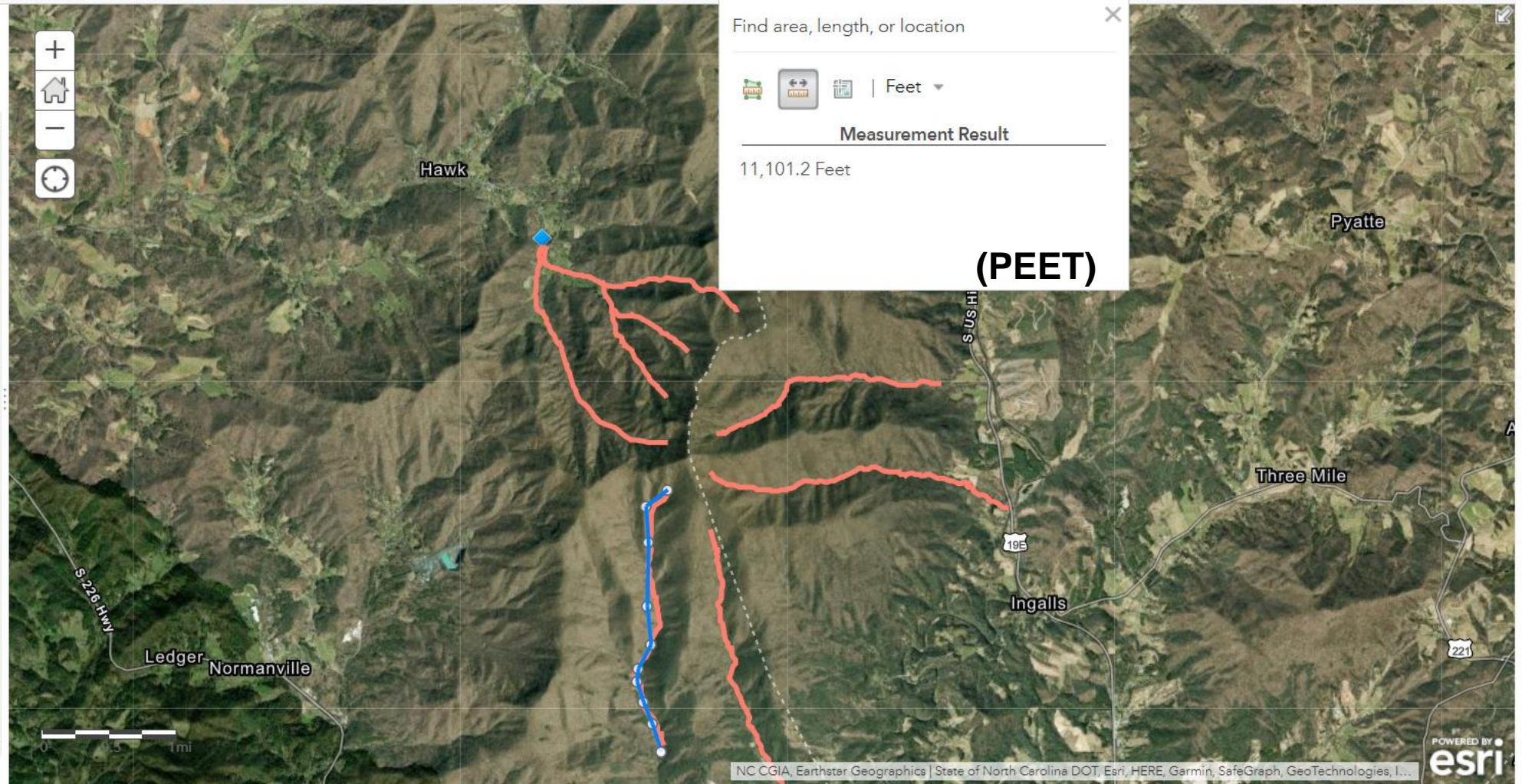
(PEET)



Department of Environmental Quality



- About Content Legend
- Contents
- NC WQ27 Waters 2022
 - NC Community WIPS
 - NC WIPS2 Status
 - NC WIPS2 Project Type
 - WIPS 1.0 Retired Project Types
 - WIPS 1.0 Retired Project Status
 - SCITS Strength
 - NC Brownfields AEC View
 - NC Brownfields Boundary View
 - UST Active Facilities
 - Federal Remediation Branch
 - Soil Permits
 - RAST
- Trust Center Contact Esri Report Abuse Contact Us



(PEET)

Water Resource Value Estimator 201711...

Estimate a percent function in each functional area after implementation

Biological Function


Physical/Chemical Function

Hydrologic Function

Hydraulic Function


Geomorphology Function

Riparian Function

 *Water Quality*

PEET in Reverse

Survey123 for ArcGIS

Water Resource Value Estimator 201711... 

Implementation Plan- Ephemeral (PEET)


Implementation Plan Area Reference Value
 In Dollars per Year- Assumes stream is fully restored or undisturbed

Estimated Project Cost

Estimated Project Post Value

post minus pre

Return On Investment
 in years



Survey123 for ArcGIS

Project Level Effectiveness Monitoring Tool

Enter Assessments

Assessment Measure

- Aquatic Habitat
- Conveyances
- Fish Passage
- Geomorphology
- Hydraulics
- Hydrology
- Livestock
- Riparian Condition

Assessment Status

- Exceeding Criteria
- Meeting Criteria
- Data Inconclusive

Assessment Note

Quality

✓

Project Level Effectiveness Monitoring

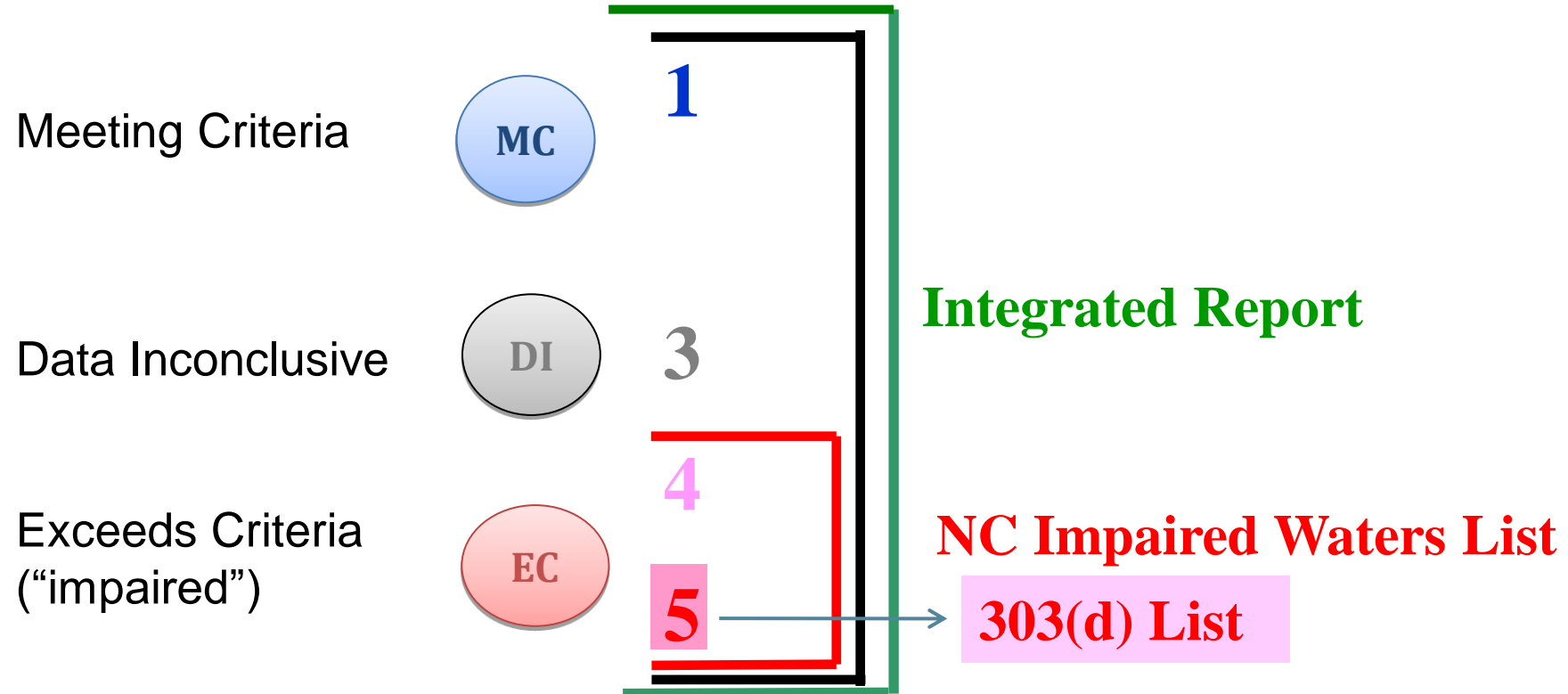
- **Non-traditional parameters without WQ standards**
- **Category 4r assessments (mostly)**
- **Have added Protection as one of the assessment measures?**

4r before and **1r** after

(PLEM)



Integrated Reporting Categories



Tracking to Protection in the Integrated Report

Turbidity, Exceeding Criteria- **Category 5**

Approaches

→ Turbidity, Exceeding Criteria- **Category 5r**

→ Turbidity, Exceeding Criteria- **Category 4b**

→ Turbidity, Exceeding Criteria- **Category 4t TMDL**

→ Aquatic Passage, Exceeding Criteria- **Category 4c Dams**

Tracking to Protection in the Integrated Report

→ Turbidity, **Exceeding Criteria- Category 5r**

→ Turbidity, **Exceeding Criteria- Category 4b**

→ Turbidity, **Exceeding Criteria- Category 4t TMDL**

Turbidity- **Category 4t** ↔ Turbidity- **Category 1t**

Turbidity- **Category 5r** ↔ Turbidity- **Category 1r**

Tracking to Protection in the Integrated Report

Turbidity- **Category 4t** ↔ Turbidity- **Category 1t**

Turbidity- **Category 5r** ↔ Turbidity- **Category 1r**

Data noise or restoration success with protection?

Turbidity- **Category 4t** → Turbidity- **Category 1t**

Turbidity- **Category 5r** → Turbidity- **Category 1r**

Protection- **Category 4r** → Protection- **Category 1r**

Protection assurance

Department of Environmental Quality



Tracking to Protection in the Integrated Report

→ Aquatic Passage, **Exceeding Criteria- Category 4c Dams**

Assessment=Dam is obsolete

→ Aquatic Passage, **Exceeding Criteria- Category 4r**

Assessment=Dam removal plan is in place

→ Aquatic Passage, **Meeting Criteria- Category 1r**

Assessment=Dam removed –fish can swim

This one is actually in ATTAINS

Department of Environmental Quality

