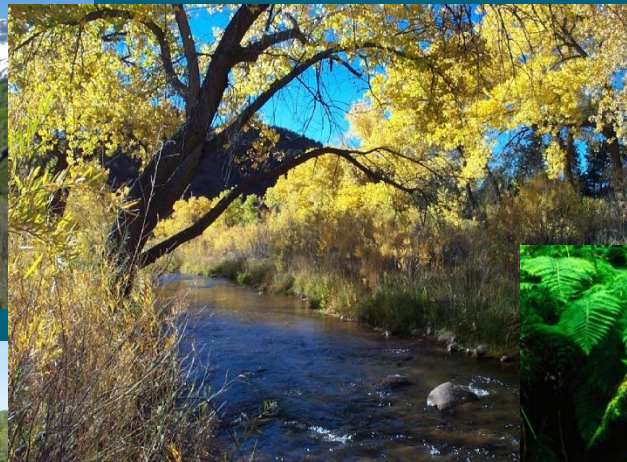


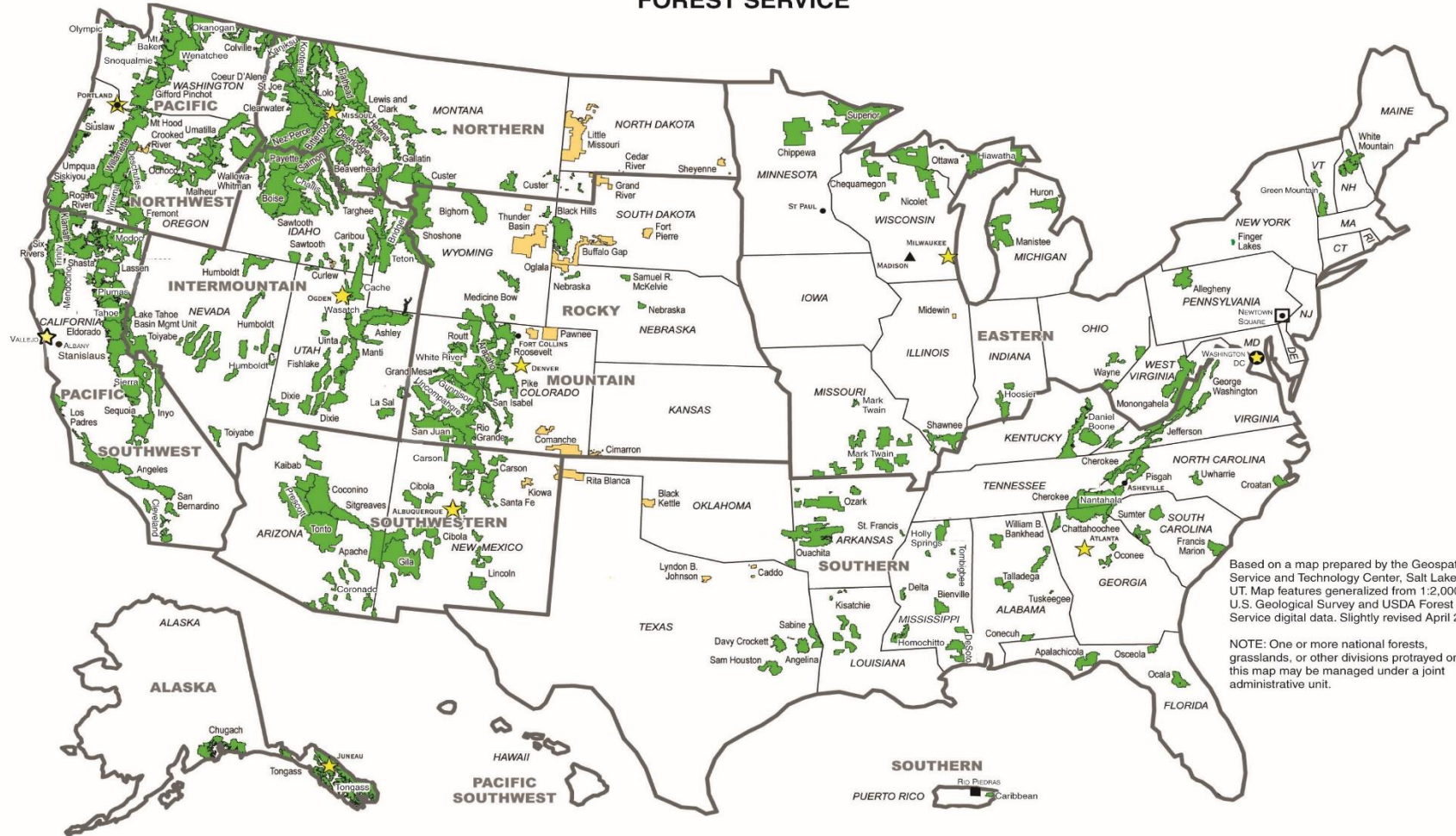
# Opportunities for Cooperation with USDA Forest Service



**Mike Eberle, US Forest Service**  
**CWA Protection Learning Exchange**

# Where are your National Forests and Grasslands?

U.S. Department of Agriculture  
**FOREST SERVICE**



Based on a map prepared by the Geospatial Service and Technology Center, Salt Lake City, UT. Map features generalized from 1:2,000,000 U.S. Geological Survey and USDA Forest Service digital data. Slightly revised April 2002.

NOTE: One or more national forests, grasslands, or other divisions portrayed on this map may be managed under a joint administrative unit.

- ★ National Headquarters
- ★ Regional Headquarters
- Research Station Headquarters
- ▲ Forest Products Laboratory
- State and Private Forestry Area Headquarters (In other Regions these activities are directed from Regional headquarters)
- International Institute of Tropical Forestry
- National Forests
- National Grasslands
- Regional Boundaries

# The Forest Service at a Glance

- 193 million acres of forests and grasslands (about the size of Texas), about 8.5% of the total land area in the US
- 9 geographic regions
- 155 national forests and 20 grasslands
- 44 States, Puerto Rico, and the Virgin Islands

<http://www.fs.fed.us/>



# The Forest Service and Water...

## Fast Facts

- The FS manages the largest single source of water in U.S., with 18% from National Forests
- Forests in the U.S. provide drinking water to over 180 million people
- Waters on National Forests provide habitat for over 140 threatened and endangered aquatic and amphibian species
- About 15 million users/year fish for recreation on FS-managed lands, including over 220,000 miles of streams and over 2.3 million acres of lakes, ponds, and reservoirs.

# Opportunities for Collaboration

- Overview of today's presentation:
  - What's existing?
  - Where can we improve collaboration?
  - What more is needed (and at what levels)?

# Existing Opportunities

- FS has MOUs/MOAs with several states
  - “..outlines the roles and responsibilities.. in implementing the nonpoint source water quality provisions..”
  - “..for managing and controlling point and nonpoint source water pollution...”
  - “...document the cooperation between the parties to implement the Montana Nonpoint Source Management Plan....”

# Existing Opportunities

- FS' Partners benefit from 319 funds to complete:
  - Post-fire restoration activities
  - Wetland/Riparian/River restoration projects
  - Social trails and roads closures
  - eDNA work to identify *E.coli* sources

# Areas for Improved Collaboration

- FS has many landscape-scale initiatives:
  - Collaborative Forest Landscape Restoration
  - Joint Chief's Landscape Restoration Partnership
  - Legacy Road and Trails Program
  - ETC...
- Today, let's focus on two opportunities
  - National Wild & Scenic Rivers
  - Watershed Condition Framework Projects



# Areas for Improved Collaboration

- FS has many landscape-scale initiatives:
  - Collaborative Forest Landscape Restoration
  - Joint Chief's Landscape Restoration Partnership
  - Legacy Road and Trails Program
  - ETC...
- Today, let's focus on two opportunities
  - National Wild & Scenic Rivers
  - Watershed Condition Framework Essential Projects

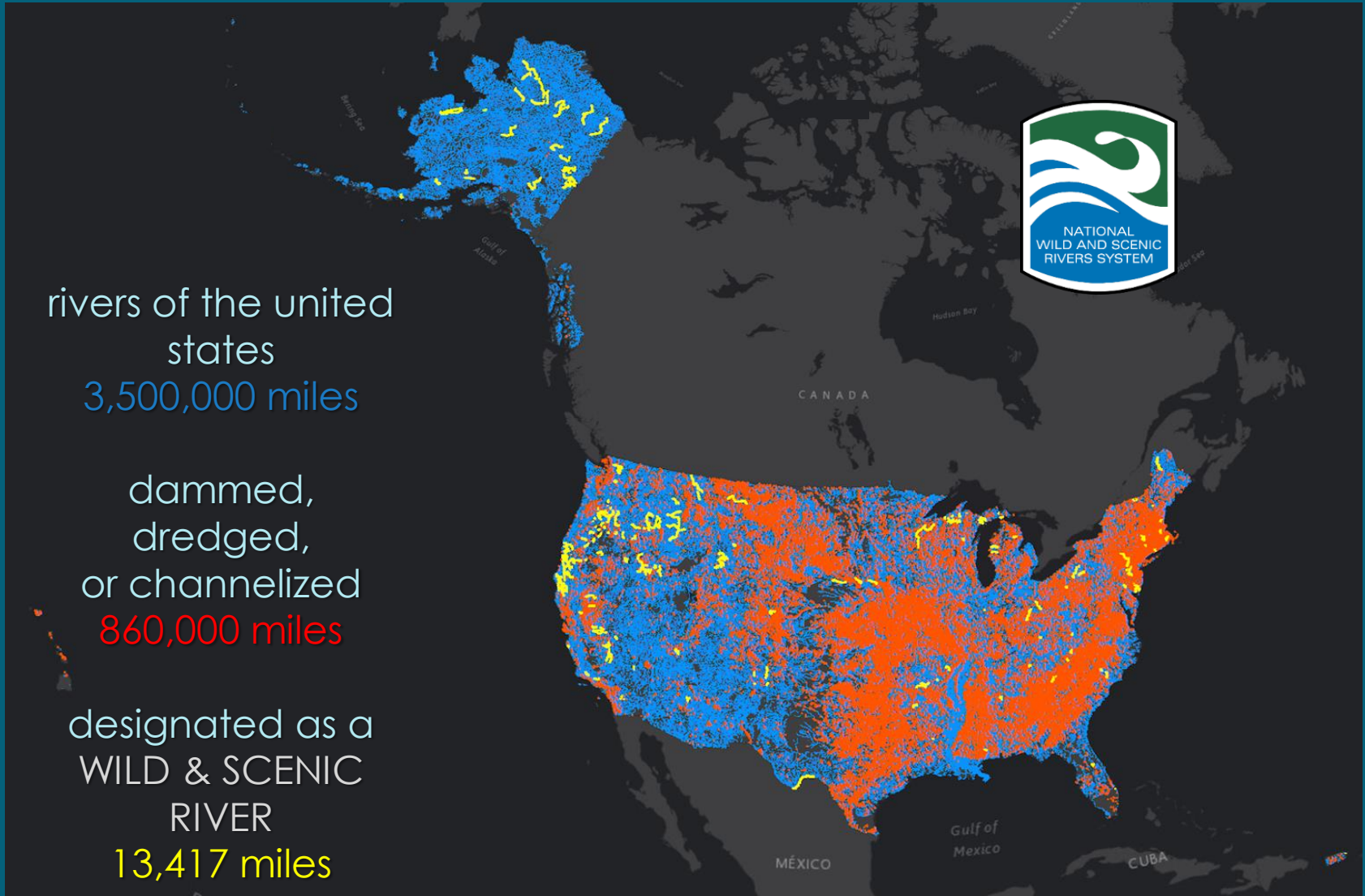
# Rivers of the United States



rivers of the united  
states  
3,500,000 miles

dammed,  
dredged,  
or channelized  
860,000 miles

designated as a  
WILD & SCENIC  
RIVER  
13,417 miles



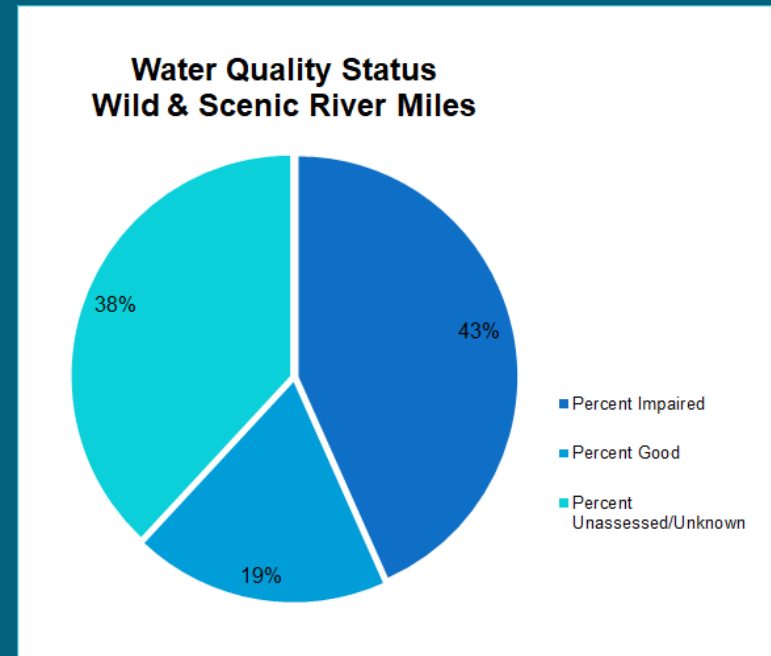
# Wild and Scenic Rivers Act of 1968

## Key Water Quality Provisions

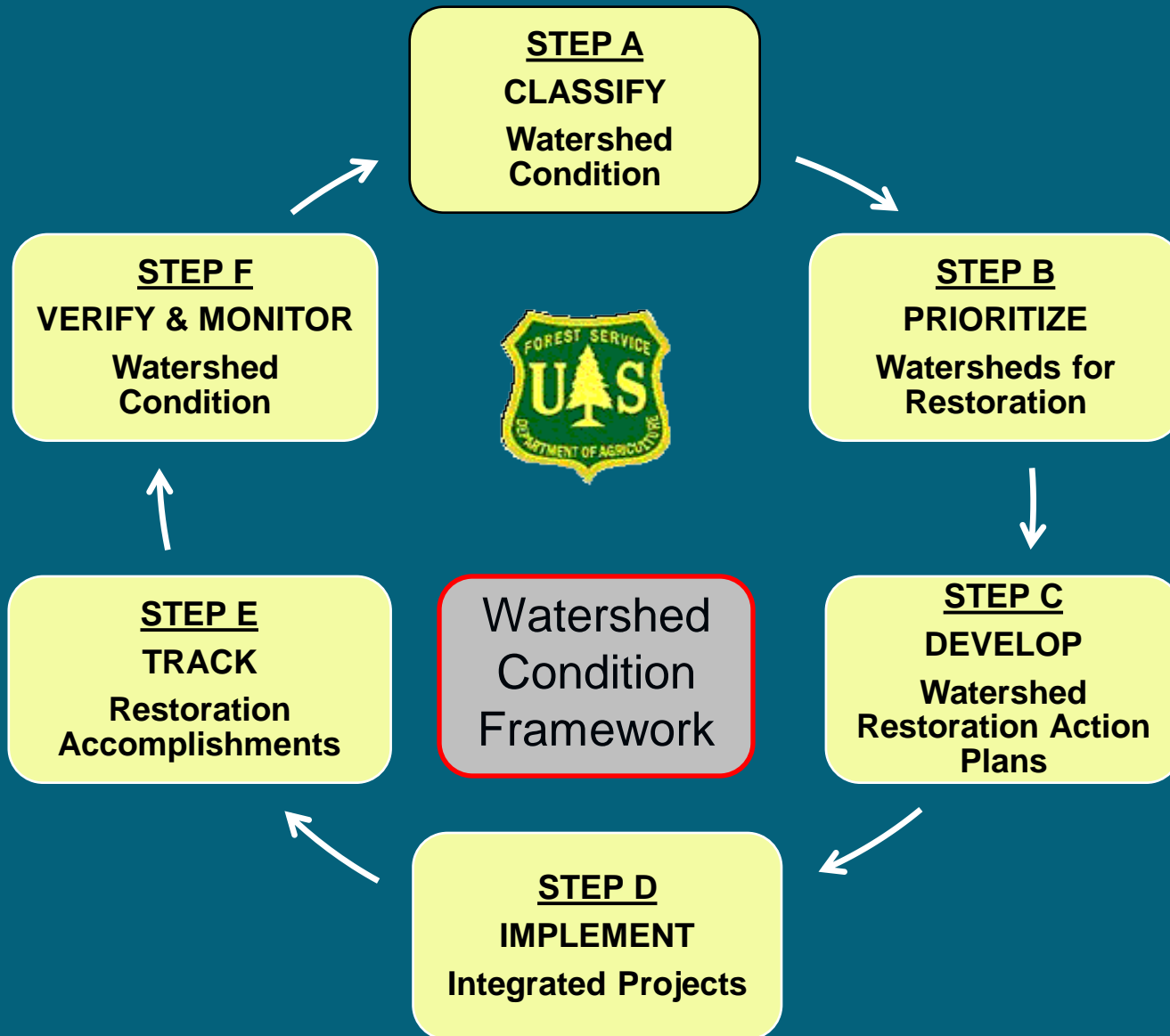
- **Section 1** - Describes water quality protection as a fundamental purpose of the Act.
- **Section 10** - Protect and Enhance
- **Section 11** Cooperate to plan, protect and manage river resources
- **Section 12(c)** - Directs federal agencies to cooperate with EPA and appropriate state agencies to eliminate and diminish water pollution

# W&S Rivers Water Quality Status

- 43% of all river miles impaired
- 19% of river miles are considered good
- 38% of river miles unknown or unassessed
- Source of impairment often originates outside the river corridor

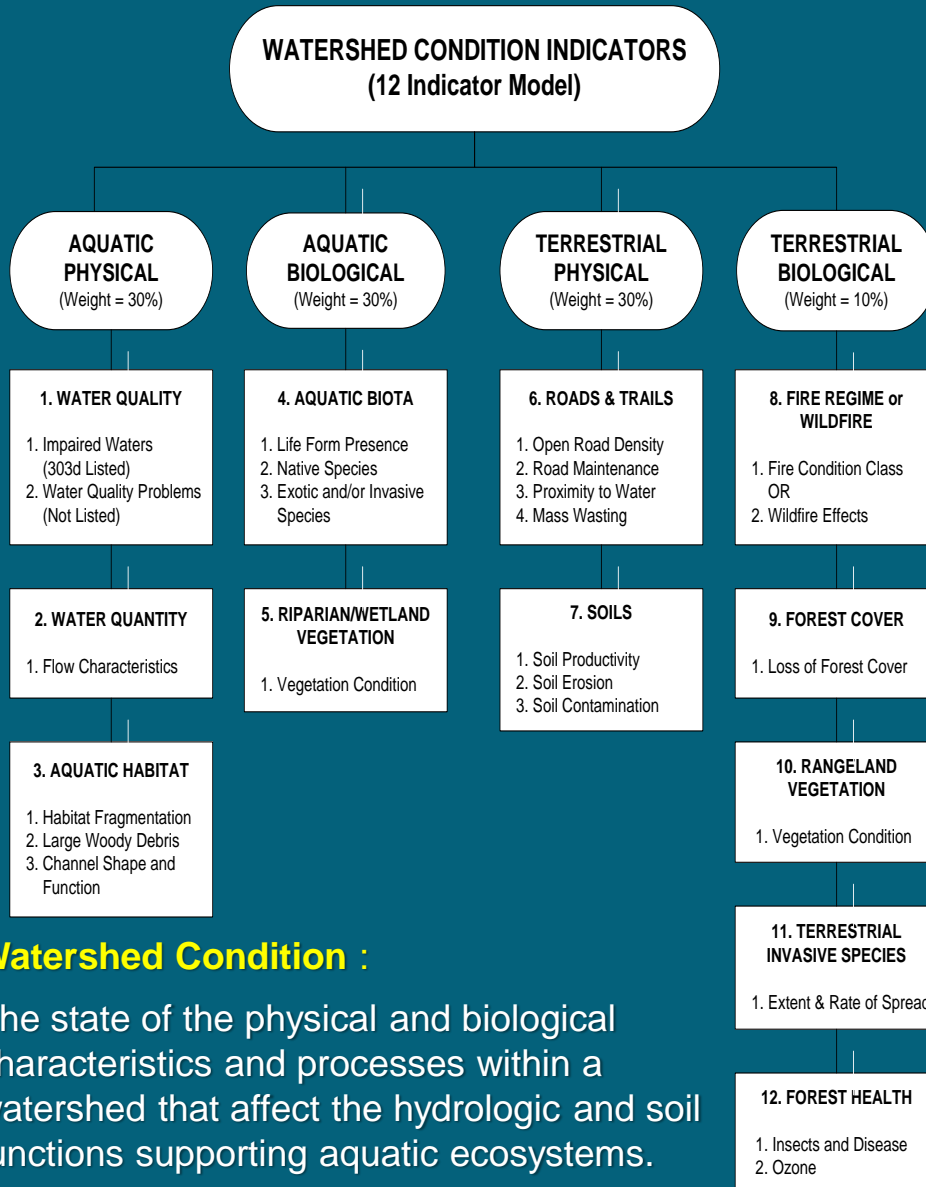


# Watershed Condition Framework





# Watershed Condition Indicators

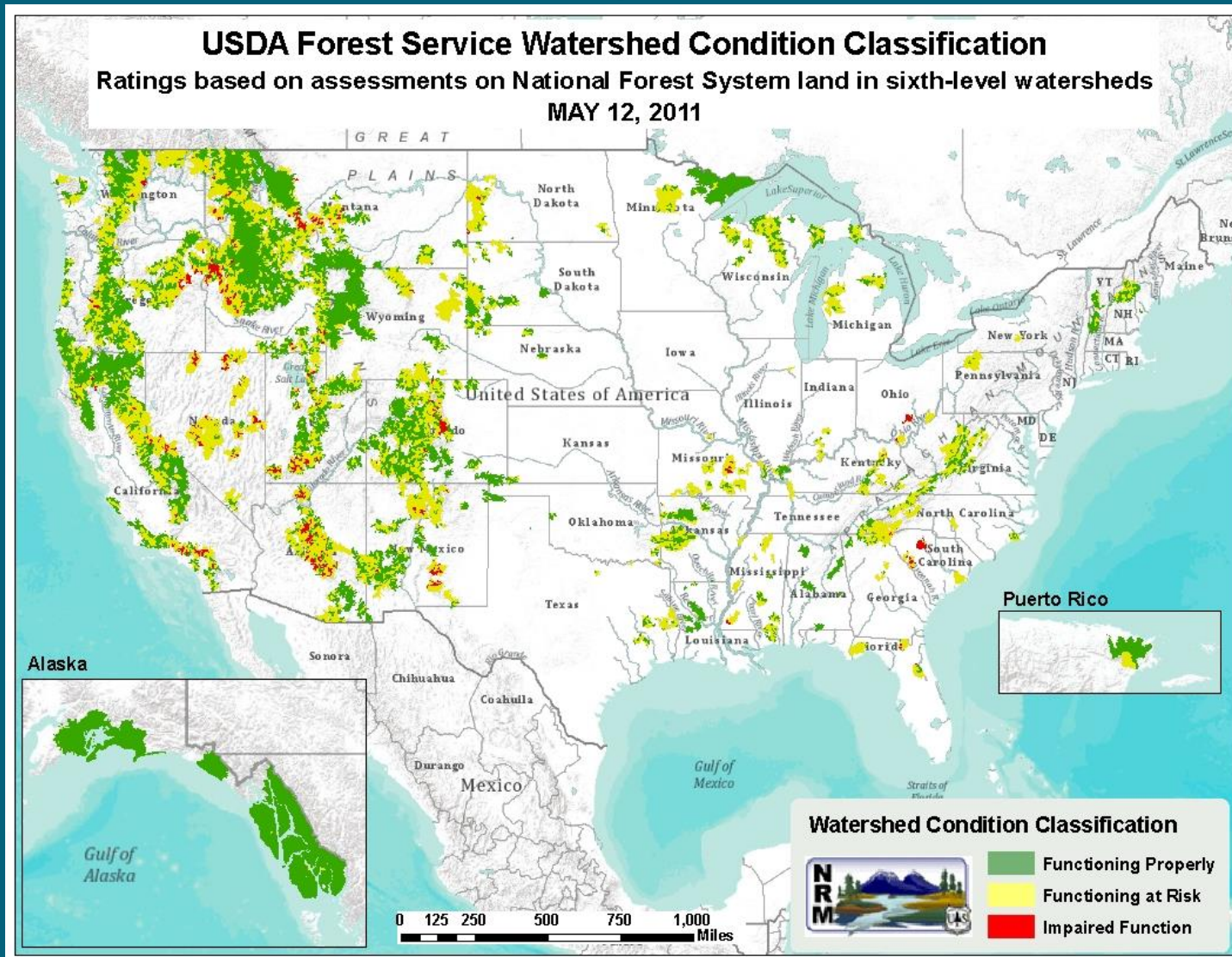


1. Water Quality
2. Water Quantity
3. Aquatic Habitat
4. Aquatic Biota
5. Riparian/Wetland Vegetation
6. Roads and Trails
7. Soils
8. Fire Regime or Wildfire
9. Forest Cover
10. Rangeland Vegetation
11. Terrestrial Invasive Species
12. Forest Health

## Watershed Condition :

The state of the physical and biological characteristics and processes within a watershed that affect the hydrologic and soil functions supporting aquatic ecosystems.

# Map of Condition Class National Forest System Watersheds



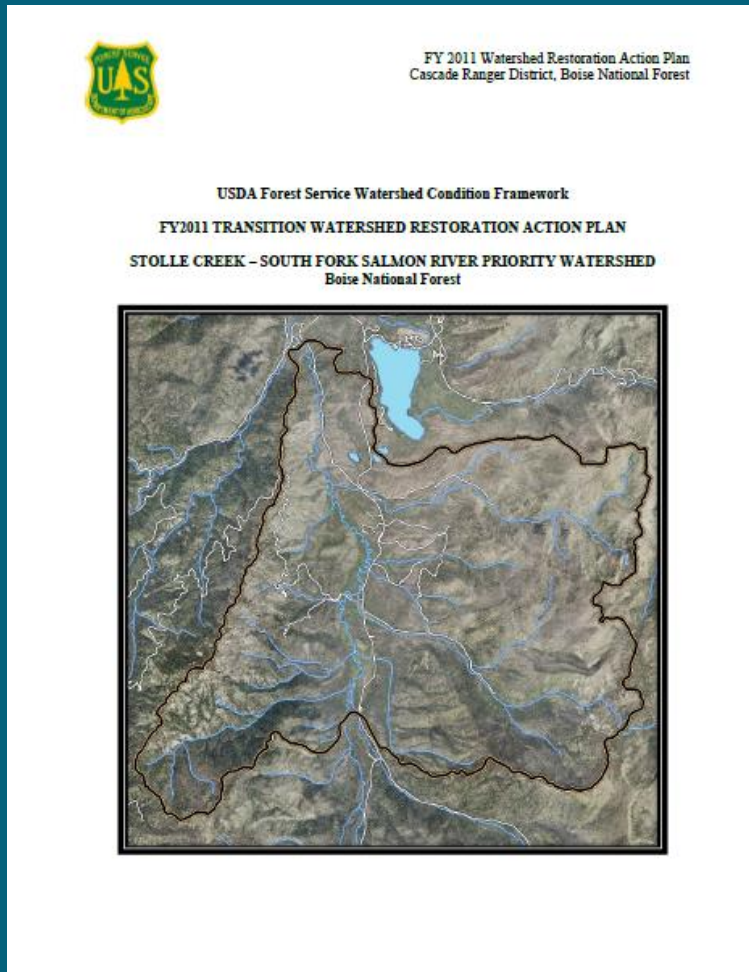


# Interactive Map of Condition Class and Designated Priority Watersheds

**USDA Forest Service Watershed Condition Classification and Priority Watersheds**  
Ratings based on assessment on National Forest System land in sixth-level watersheds



# Watershed Restoration Action Plans (WRAPs)



## Information contained in WRAPs:

- List of Active Partners
- Key Watershed Issues
- Important Ecological Values within watershed
- Description of Essential Projects
- Estimate of Project Costs

# Additional Opportunities

- The FS recently compiled an inventory of “FS Source Watersheds”
- Sub-watersheds containing 5% NFS Lands
  - EPA’s Source Water and Wellhead Protection Areas
  - State-designated drinking water protection areas
  - Municipal Watersheds (designated by the President, Congress, or through MOU or Land Management Plan)
- Information will be used to prioritize
  - Landscapes for hazardous fuel reduction treatments
  - Watershed restoration projects



# Looking to the Future



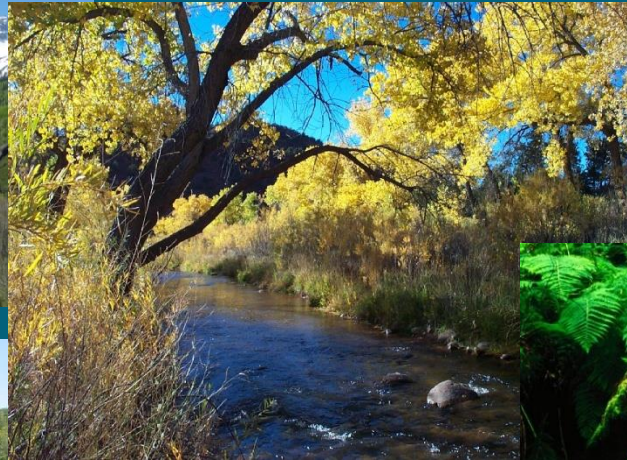
- Bipartisan Infrastructure Law
- New hires
- Wildfire risks
  - Pre/Post-Fire Risk Reduction
- Recent SCOTUS decisions

# Looking to the Future



What more is needed (and at what levels)?

# Questions and Discussion



Mike Eberle – [michael.eberle2@usda.gov](mailto:michael.eberle2@usda.gov)