



An overview of TMDL Revisions

June 3, 2022

Ansel Bubel

Florida Department of Environmental Protection



Why revise a perfectly good TMDL??

- Too old
- Too simple
- Mistake in original analysis
- New discharger
- New criteria
- Restoration needs
- New information

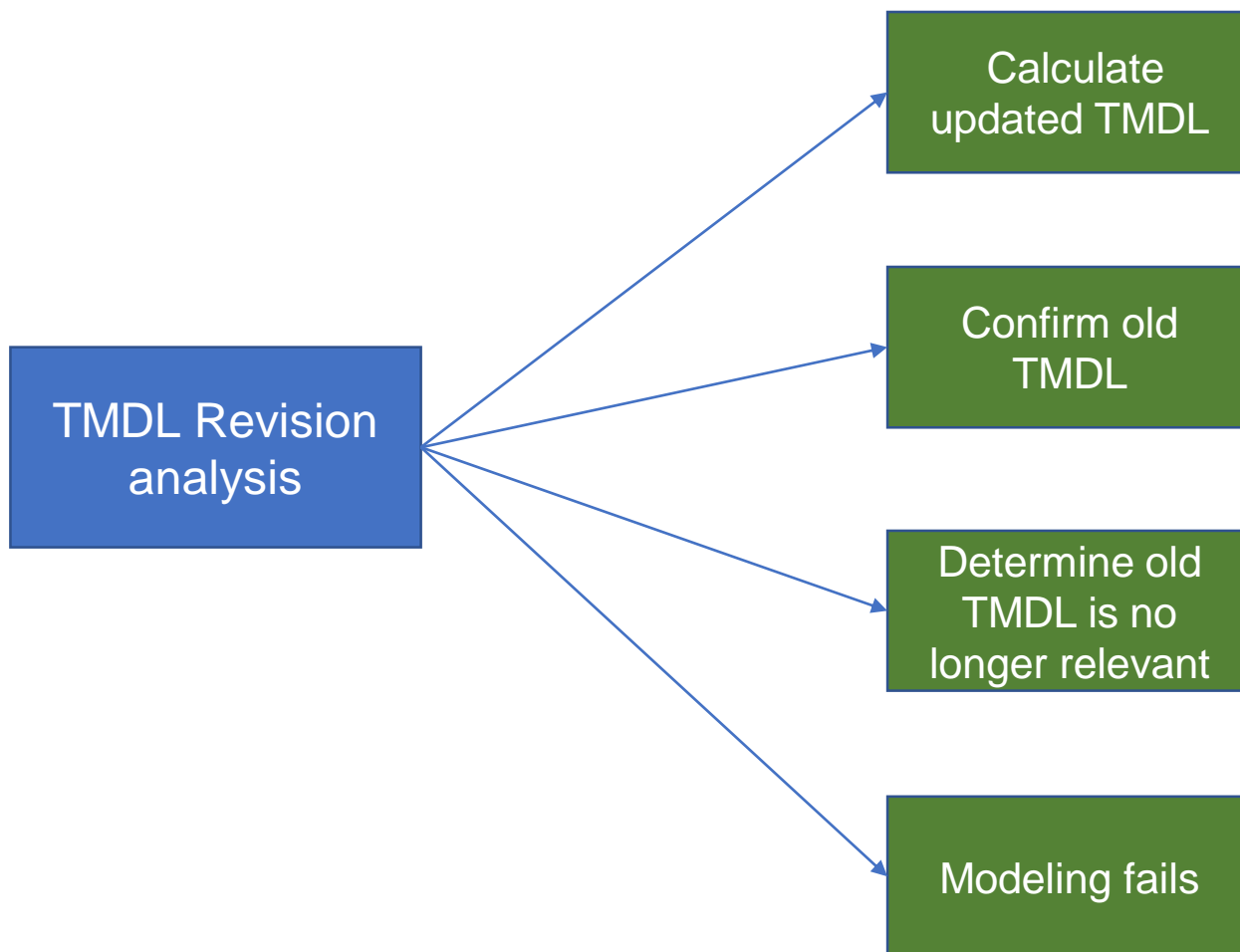


Process of re-evaluating a TMDL

- Gather new data
- Re-evaluate model
- Re-derive TMDL loads/concentrations
- State level adoption
- EPA Approval

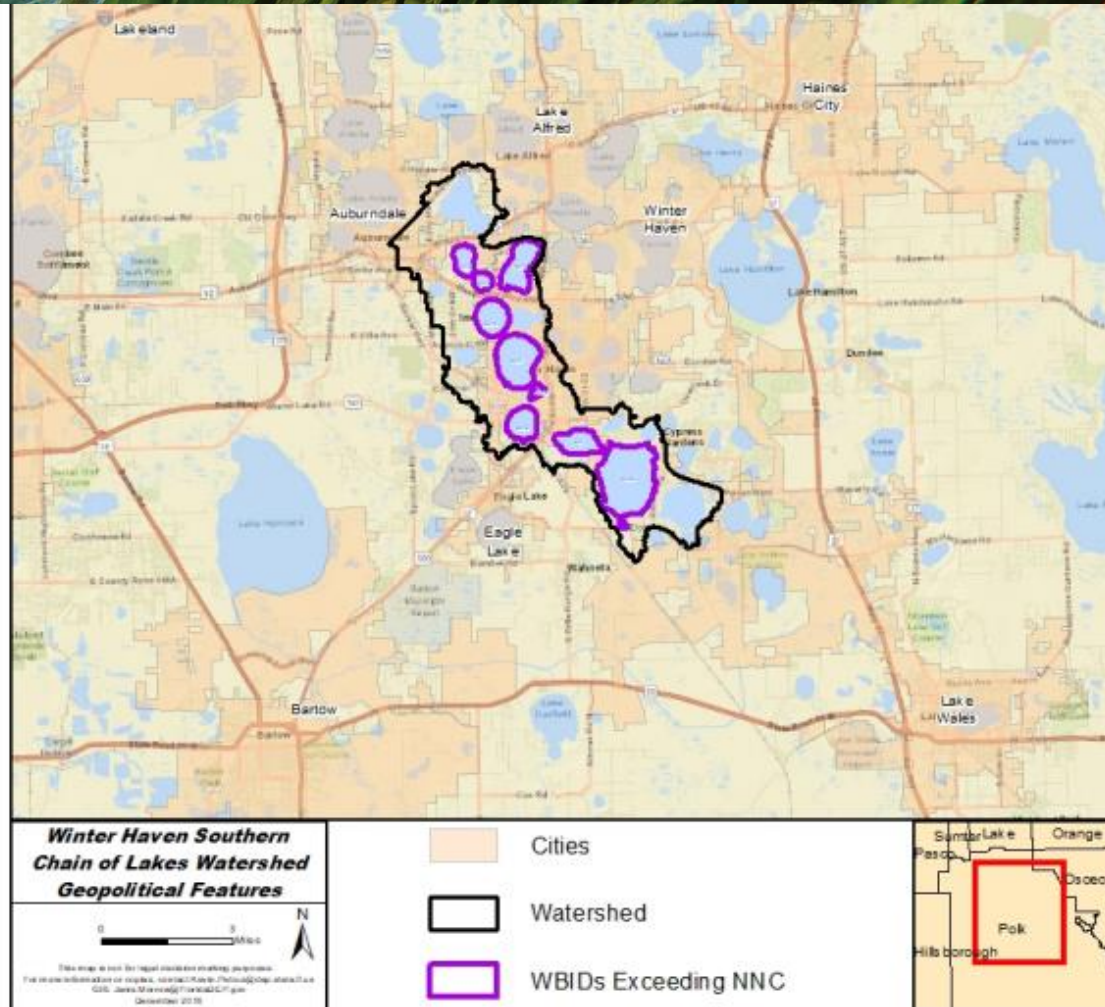


Possible outcomes





Example #1: Winterhaven Chain of Lakes



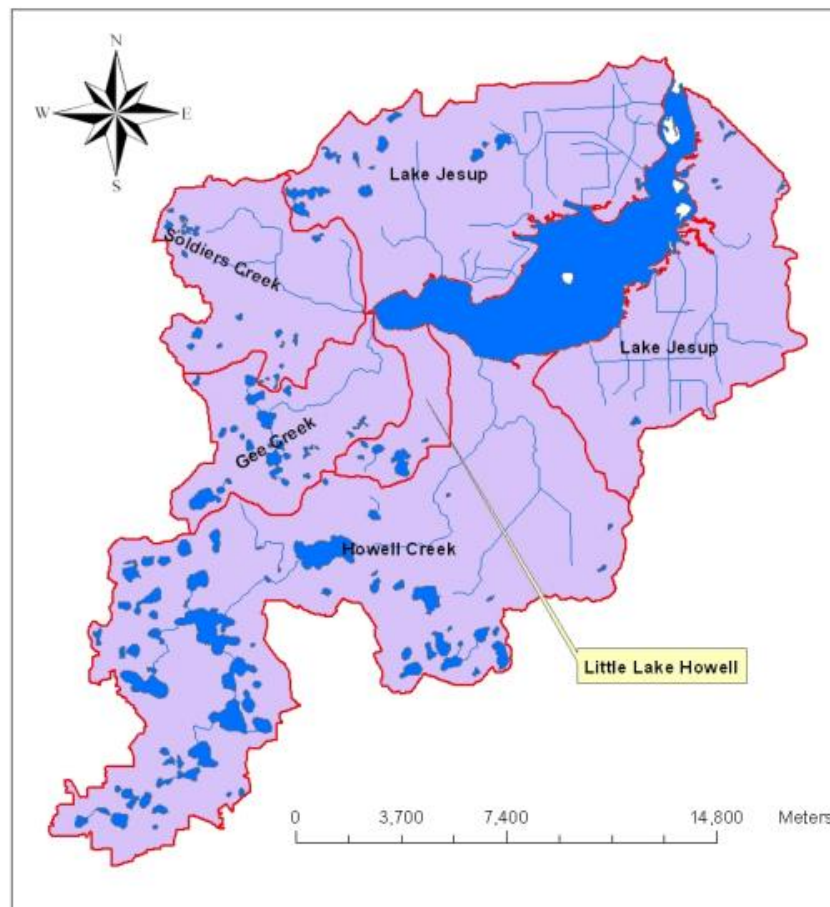


Example #1: Winterhaven Chain of Lakes

- Old TMDLs for one nutrient
- Additional nutrient impairments for lakes with TMDL
- New lake impairments in the area



Example #2: Lake Jesup





Example #2: Lake Jesup

- Significant restoration underway through a Basin Management Action Plan
- Need for more detailed allocations
- Need to incorporate update landuse



Example #3: Estuary in Florida





Example #3: Estuary in Florida

- Significant restoration underway through a Basin Management Action Plan
- Need for more detailed allocations
- Need to add new impairments



Possible outcomes

